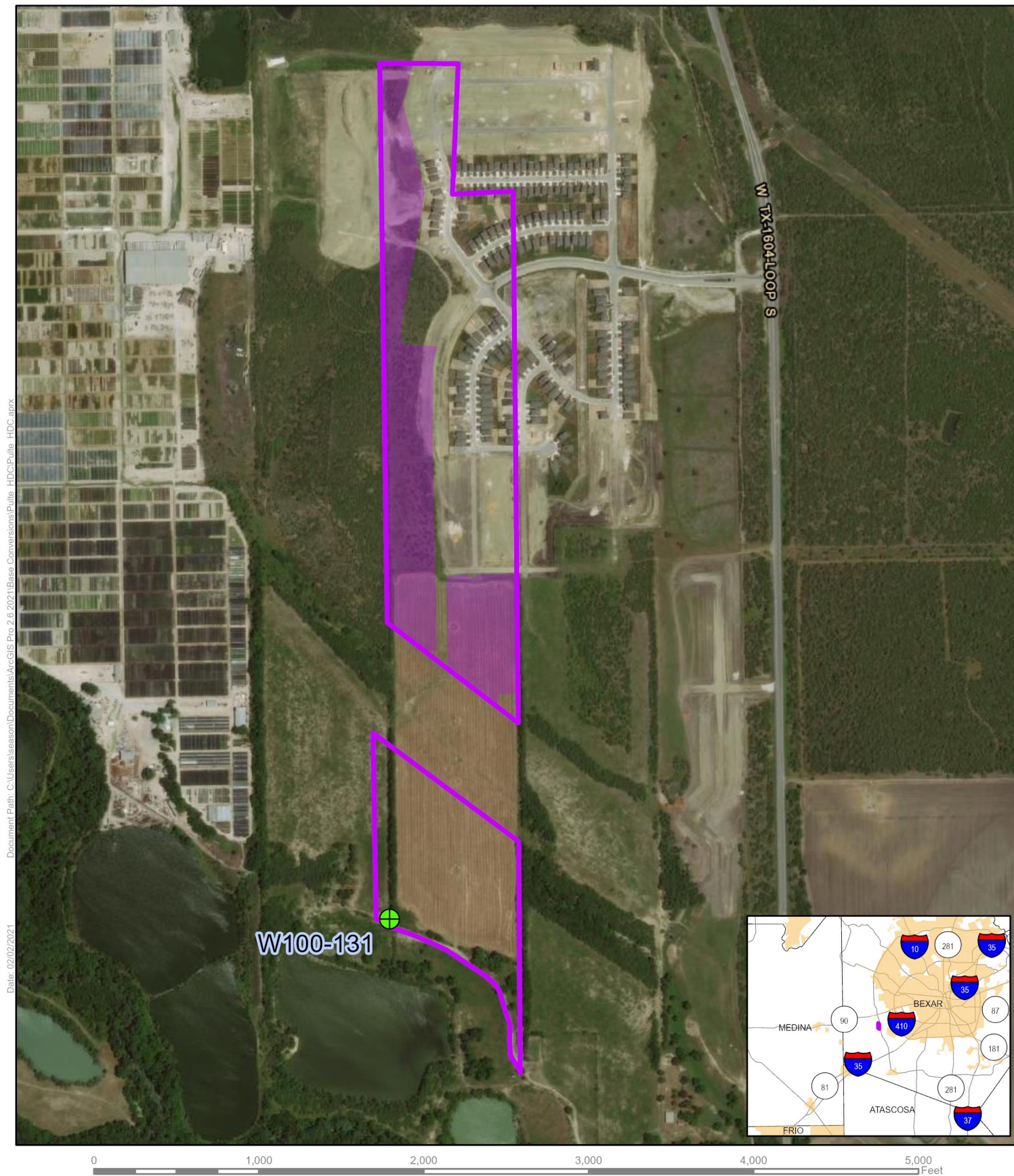


Exhibit A: P109-320 (BE00064A) Pulte Homes of Texas, L.P. and HDC Westlakes, LLC



Spatial Reference
 PCS: NAD 1983 NSRS2007 Texas Centric Mapping System Albers
 GCS: GCS NAD 1983 NSRS2007
 Datum: NAD 1983 NSRS2007
 Projection: Albers

- Historically Irrigated Land
- Historically Irrigated Acres (+/-26.2) Subject to Application



Reference Scale: 1:13,285

Disclaimer: This map was created for demonstrative use by the Edwards Aquifer Authority (EAA) and not intended for other purposes. This map is to be used as an informational tool only; it is not suitable for projects requiring survey accuracy; data accuracy is not guaranteed.

