

# **City of New Braunfels 2021 EAHCP Work Plan**

**2021 City of New Braunfels Work Plan Budget**

<b>EAHCP Section</b>	<b>Conservation Measure</b>	<b>Table 7.1</b>	<b>Estimated 2021 Budget</b>
5.2.1	Flow Split Management	\$0	\$0
5.2.2.1/ 5.2.2.3	Old Channel Aquatic Vegetation Restoration & Maintenance	\$100,000	\$50,000
5.2.2.2/ 5.2.2.3	Landa Lake/ Comal River Aquatic Vegetation Restoration & Maintenance	\$50,000	\$100,000
5.2.3	Management of Public Recreation	\$0	\$0
5.2.4	Decaying Vegetation Removal and Dissolved Oxygen Management	\$15,000	\$15,000
5.2.5/5.2.9	Non-Native Animal Species Control	\$75,000	\$40,000
5.2.6/ 6.3.6	Monitoring and Reduction of Gill Parasites	\$75,000	\$10,000
5.2.7	Prohibition of Hazardous Material Transport Routes	\$0	\$0
5.2.8	Native Riparian Habitat Restoration (Riffle Beetle)	\$25,000	\$5,000
5.2.10	Litter and Floating Vegetation Management	\$0	\$25,000
5.2.11	Golf Course Management	\$0	\$0
5.7.1	Native Riparian Habitat Restoration	\$100,000	\$85,000
5.7.5	Management of Household Hazardous Waste	\$30,000	\$40,385
5.7.6	Impervious Cover/ Water Quality Protection	\$100,000	\$100,000
	<b>Totals</b>	<b>\$570,000</b>	<b>\$470,385</b>

### 2021 City of New Braunfels Work Plan and Funding Application Amendments

Amendment #	Date Committee Approved	Conservation Measure Amended	Y/N Funding Application Change	Funding Application Change (\$)	Date EAA Board Approved	Comments
0	5.21.2020	Original Work Plan	Y	NA	NA	
1	10.08.2020	5.2.8, 5.7.1, 5.7.6	N	NA	NA	Includes design of a stormwater retrofit
1	10.08.2020	Budget Table updated to match 2021 Funding Application	N	NA	NA	
0	10.08.2020	Original Funding Application	NA	NA	TBD	

### 5.2.1 Flow Split Management

#### Long-term Objective:

To sustain flow rates in the Old Channel of the Comal River that complement Old Channel aquatic vegetation restoration efforts, minimize channel scouring, and maximize the quality of fountain darter habitat.

#### Target for 2021:

Maintain flow rates in the Old and New Channels of the Comal River to meet objectives specified in the revised Table 5-3 of the EAHCP (**Table 1**).

Priority will be given to achieving target flow rates in the Old Channel and, secondly, to flow rates in the New Channel. City of New Braunfels staff will monitor streamflow conditions via USGS streamflow gages and operate the flow-control gate between Landa Lake and the Old Channel to achieve flow targets. Maintenance activities associated with the flow-control gates will be conducted as needed to ensure continued operability.

**Table 1.** EAHCP Table 5-3 (revised)

Total Comal Springflow (cfs)	Old Channel (cfs)		New Channel (cfs)	
	Fall, Winter	Spring, Summer	Fall, Winter	Spring, Summer
350+	65	60	280+	290+
300	65	60	235	240
250	60	55	190	195
200	60	55	140	145
150		55		95
100		50		50
80		45		35
70		40		30
60		35-40		25
50		35-40		15
40		30		10
30		20		10

#### Methodology:

The City of New Braunfels will manage the flow-split program according to flow rates specified in revised Table 5-3 (**Table 1**). A standard operating procedure has been developed by the City of New Braunfels to guide adjustments to the flow-control gate and to achieve flow-split targets. City of New Braunfels staff will monitor real-time streamflow conditions at USGS gages in the Comal River system and adjust the flow-control gates, as needed, to meet flow-split streamflow targets. The primary 48" culvert gate and the new back-up culvert gates will be operated conjunctively to meet target flow rates. Floating vegetation and debris will be manually removed from the control gate and screen from a canoe or boat. Vegetative material removed from the intake

structure will be placed along the banks of Landa Lake and/ or returned to Landa Lake. Floating vegetation is managed and funded under task of EAHCP § 5.2.10: Litter and Floating Vegetation Management. The flow control gate will be exercised routinely to maintain functionality of the gate.

**Monitoring:**

Flow rates in the Old Channel, New Channel, and Comal River will be based on real-time streamflow data provided by the USGS gages in the Comal River. City of New Braunfels staff will monitor streamflow on a weekly basis, at minimum. Adjustments to the flow-control gate will be made on an as-needed basis to meet flow-spilt management objectives. City of New Braunfels staff will monitor the flow-control gate and intake screen on a regular basis to assess for vegetation build-up and debris that have the potential to restrict flow into the culvert between Landa Lake and the Old Channel. When required, trash racks and vegetation barrier booms will be cleaned to prevent accumulations of vegetation and debris. Accumulated vegetation will be placed along the banks of Landa Lake and/ or returned to Landa Lake.

**Budget:**

Table 7.1:

\$0

Available budget:

\$0

Estimated 2021 budget:

\$0

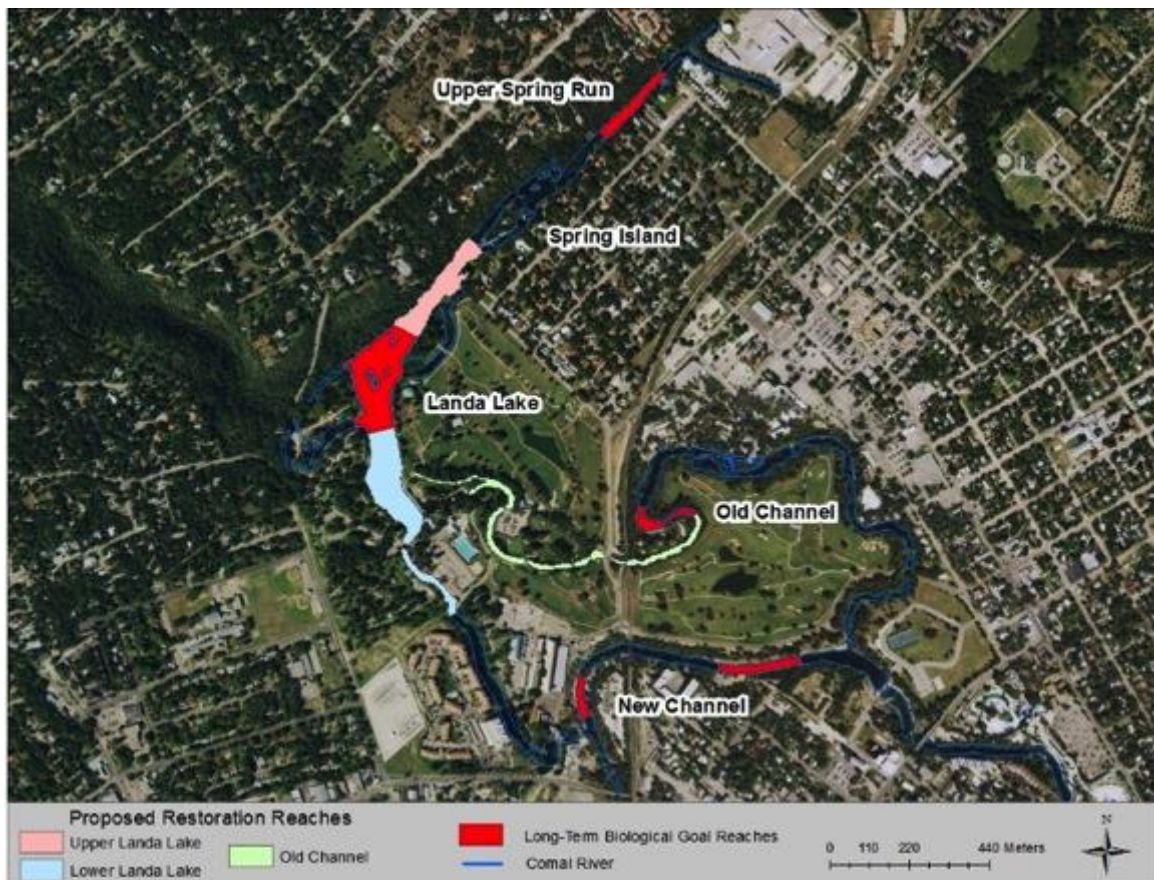
### 5.2.2.1/ 5.2.2.3 Old Channel Aquatic Vegetation Restoration and Maintenance

#### Long-term Objective:

To achieve native submerged aquatic vegetation (SAV) coverage goals for the Old Channel Long-Term Biological Goal (LTBG) and Old Channel Environmental Restoration & Protection Area (ERPA) reaches as set forth in the revised EAHCP tables 4.1 and 4.1.1, respectively. The overall intent of the aquatic vegetation restoration program is to increase and preserve the coverage of high quality habitat for the fountain darter.

#### Target for 2021:

SAV restoration efforts in 2021 will include the planting of target SAV species in an effort to achieve annual SAV restoration goals and to maintain existing SAV coverage. **Figure 1** depicts the Comal River system and identifies individual Old Channel restoration reaches. The 2021 annual SAV restoration goals, as well as the EAHCP long-term SAV coverage goals, for the Old Channel LTBG and ERPA reaches are specified by reach and vegetation type in **Table 2**. Efforts will also be made in 2021 to monitor for and remove re-emergent non-native *Hygrophila* from the Old Channel LTBG and ERPA reaches.



**Figure 1:** LTBG and restoration reaches for the Comal River System. The Old Channel ERPA restoration reach is shown in green and the Old Channel LTBG reach in red.

**Table 2:** Annual and long-term SAV restoration goals, in meters squared (m<sup>2</sup>), within Old Channel LTBG & ERPA restoration reaches.

Reach	Aquatic Vegetation Species	Meters squared of aquatic vegetation (m <sup>2</sup> )	Annual Restoration Goal	Approximate # of plantings needed to meet annual goal
		Long-term Goal	2021	2021
<b>LTBG Reaches</b>				
Old Channel	<i>Ludwigia</i>	425	50	750-1,000
	<i>Cabomba</i>	180	15	300
	<i>Sagittaria</i>	450	50*	600*
<b>Restoration Reaches</b>				
Old Channel ERPA	<i>Ludwigia</i>	850	30	450-600
	<i>Cabomba</i>	200	25	500
	<i>Sagittaria</i>	750	35*	420*
	<i>Vallisneria</i>	750	0	-
	<i>Potamogeton</i>	100	5	30

\**Sagittaria* coverage will be monitored and planting will occur only as needed given its propensity to naturally expand.

## Methodology:

### *Non-Native SAV Management:*

Non-native SAV (i.e. *Hygrophila*) has largely been removed from the Old Channel between Landa Lake and the downstream limits of the Old Channel LTBG reach. SAV gardening will occur on a monthly basis throughout the Old Channel LTBG and Restoration reaches to identify and remove re-emergent non-native SAV. Small, localized growth of non-native SAV will be removed by selective physical extraction of visible plant and root mass.

### *Native SAV Restoration:*

Target SAV species will be planted within the Old Channel LTBG and ERPA reaches to increase the coverage of individual aquatic plant species per the annual restoration goals set forth in **Table 2**. The approximate number of plants needed to achieve the annual goals is also included in **Table 2**. Individual plant species will be planted where space is available and in locations within the channel where light exposure, flow velocities, and substrate provide the most suitable conditions. Supplemental plantings of *Ludwigia* and *Cabomba* will be planted in existing restoration plots in the Old Channel LTBG and ERPA reaches, as necessary, to maintain existing coverage and/ or to replace any losses in coverage due to floods, natural competition or other factors.

*Ludwigia* will continue to be propagated in-situ within Landa Lake to provide plant stock for 2021 restoration efforts. In-situ propagation of *Ludwigia* will be conducted by collecting stem cuttings from *Ludwigia* plants present within the Comal River system. The cuttings will be placed in pots filled with substrate collected from within the Comal River system. The potted cuttings will be placed in Mobile Underwater Plant Propagation Trays (MUPPTs) that will be situated in a shallow portion of Landa Lake and allowed to produce roots and plant mass.

*Ludwigia* plants propagated in the MUPPTs, as well as *Ludwigia* cuttings, will be planted in suitable locations within the Old Channel LTBG and ERPA reaches to achieve an annual target of 50m<sup>2</sup> and 30m<sup>2</sup> of additional *Ludwigia* coverage, respectively. Slightly more than the targeted coverage of *Ludwigia* will be planted in order to account for plant die-off. Approximately 15-20 *Ludwigia* plants are needed to achieve 1m<sup>2</sup> of coverage. Therefore, approximately 750-1,000 *Ludwigia* plants will be planted in the Old Channel LTBG reach and 450-600 within the Old Channel ERPA Restoration reach to achieve target annual coverage. Supplemental plantings of *Ludwigia* will be planted within existing restoration plots within the Old Channel LTBG and ERPA reaches, as needed, to maintain existing coverage of *Ludwigia*.

*Cabomba* typically thrives in deep, low-velocity areas and will be planted in the most suitable locations in the Old Channel LTBG and ERPA reaches to achieve an annual target of 15m<sup>2</sup> and 25m<sup>2</sup> of additional *Cabomba* coverage, respectively. *Cabomba* will be planted using stem cuttings and/ or with individual rooted plants. Stemmed cuttings will be collected from the New Channel and/ or the Spring-fed pool where *Cabomba* is abundant. The cuttings will be bundled into fist-sized bundles wrapped with rubber bands to keep bundles together. The *Cabomba* cutting bundles are typically 12 to 32 inches in length and will be planted at a depth of 2/3 their length, if possible, in soft, silty sediment. This planting depth prevents *Cabomba* from loosening and floating away and ensures multiple nodes are buried to encourage maximum development of root structure. Rooted *Cabomba* will also be utilized for planting. Rooted plants will be dug up individually from areas where *Cabomba* is abundant. The rooted plants will then be planted individually into silty streambed substrate. Both the stemmed cuttings and rooted plants will be planted in a grid-pattern at 1ft centers. Approximately 20 *Cabomba* plantings are needed to achieve 1m<sup>2</sup> of coverage. Therefore, approximately 300 and 500 *Cabomba* plants will be planted in the Old Channel LTBG and Old Channel ERPA reaches, respectively. Significantly more plantings than required to meet the targeted coverage of *Cabomba* will be planted to account for plant die-off. Supplemental plantings of *Cabomba* will be planted within existing restoration plots within the Old Channel LTBG and ERPA reaches, as needed, to maintain existing coverage of *Cabomba*.

*Sagittaria* coverage will be monitored throughout the year to determine the extent of natural expansion and whether planting will be required to meet annual and long-term SAV goals. Based on existing coverage of *Sagittaria* in the Old Channel and its aggressive growth habit, it is not anticipated that *Sagittaria* will be planted in 2021. *Sagittaria* will be planted only as needed, in the most suitable locations in the Old Channel LTBG and ERPA reaches to achieve annual targets of 50m<sup>2</sup> and 35m<sup>2</sup> of additional *Sagittaria* coverage at full grow out. *Sagittaria* will be planted as transplants harvested from Landa Lake and in the Old Channel where dense *Sagittaria* stands exist. The leaves of the transplants will be trimmed prior to planting to decrease buoyancy and drag. A few *Sagittaria* plants can form a dense colony within several months. *Sagittaria* has been observed to be slightly tolerant of lower light levels allowing it to be planted in deeper water and in shady locations. Approximately 12 *Sagittaria* plants are needed to achieve 1m<sup>2</sup> of coverage. Therefore, approximately 600 and 420 *Sagittaria* plants will be planted in the Old Channel LTBG and ERPA reaches, respectively, as needed, to achieve target annual coverage.

*Potamogeton* will be planted only as needed in the Old Channel ERPA reach to achieve an annual target of 5m<sup>2</sup> of additional *Potamogeton* coverage at full grow out. It is expected that increases in *Potamogeton* will be achieved through natural expansion. If required, *Potamogeton* will be planted using bare-root rhizomes that are harvested from the Comal River system. Approximately six rhizome sections need to be planted to achieve 1m<sup>2</sup> of *Potamogeton* coverage. Therefore, approximately 30 *Potamogeton* rhizomes will be planted in the Old Channel ERPA reach to achieve the target annual coverage.



Competition between native plants has been observed in the Old Channel where *Potamogeton* and *Sagittaria* have encroached on and taken over *Ludwigia* and *Cabomba* stands, resulting in loss of *Ludwigia* and *Cabomba* coverage. To minimize the effects of competition and to promote the growth and spread of *Ludwigia* and *Cabomba*, prioritized plot areas will be established for these species. The plots will be established by first clearing an area of *Sagittaria* and then planting *Ludwigia*/ *Cabomba*. Plant material that is removed during this activity will be collected and removed from the lake/ river. The plots will be maintained by removing *Sagittaria* that begins to encroach into the plots.

Following planting of native SAV, monthly gardening and maintenance will occur between March and October to assess health of plants and to identify and remove any non-native vegetation that is beginning to establish within planting areas.

**Monitoring:**

As discussed in previous sections, areas where non-native vegetation removal has occurred will be routinely monitored for the re-establishment of non-native vegetation. Planted areas will also be monitored to assess expansion, die-off, and competition by non-native species. Once native aquatic vegetation is established in an area, monitoring will be conducted on a less frequent basis.

Vegetation mapping in both the Old Channel LTBG reach and the Old Channel ERPA will be conducted to evaluate SAV coverage and to assess the progress of aquatic vegetation restoration efforts. Mapping will occur in January, April, and October. The October mapping event will be used as a basis for assessing overall SAV coverage with respect to meeting long-term vegetation goals and developing annual restoration goals for 2022 and subsequent years.

**Budget:**

Table 7.1:

\$100,000

Available budget:

\$100,000

Estimated 2021 budget:

\$50,000

\*The decrease of \$50,000 in the 2021 budget for this Conservation Measure will be used to fund the Comal River/ Landa Lake Aquatic Vegetation Restoration Conservation Measure (EAHCP § 5.2.2.2).

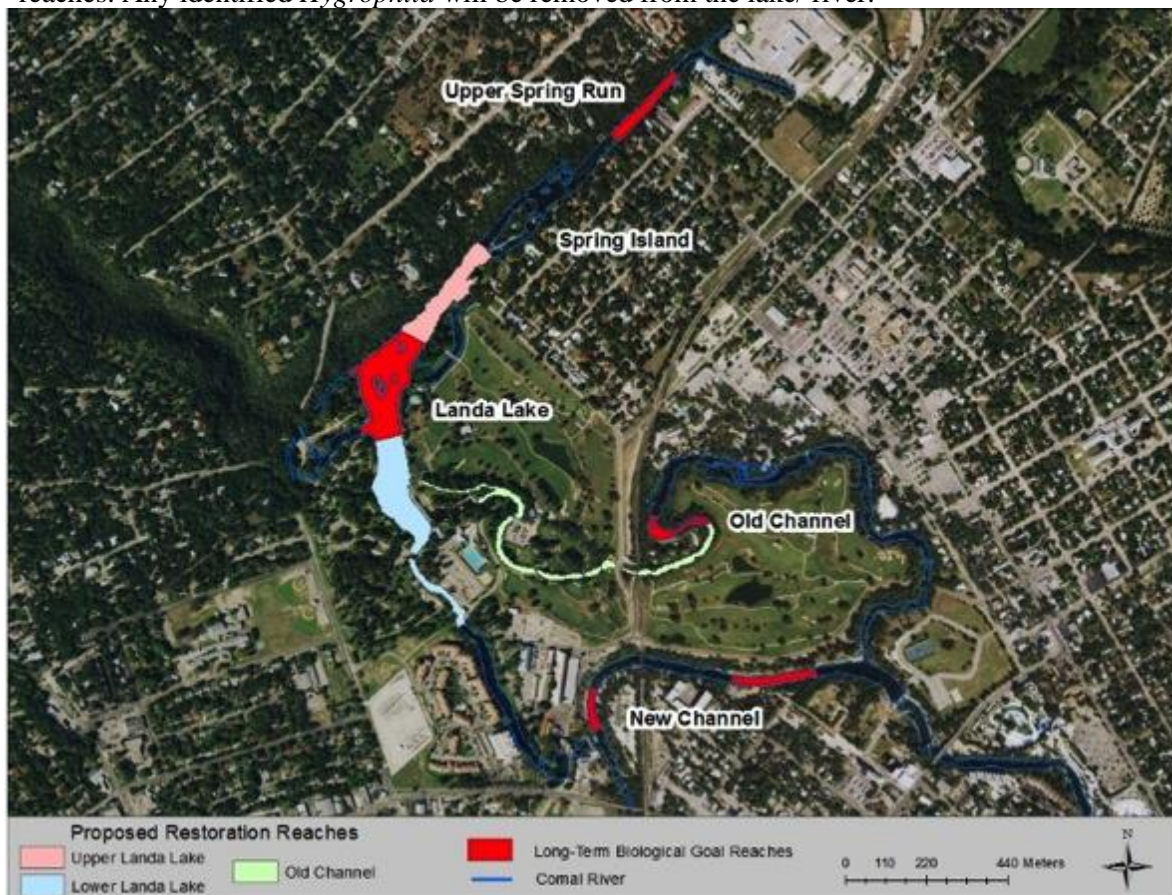
### 5.2.2.2/5.2.2.3 Comal River/ Landa Lake Aquatic Vegetation Restoration and Maintenance

#### Long-term Objective:

To achieve native submerged aquatic vegetation (SAV) coverage goals for the Landa Lake, New Channel, and Upper Spring Run LTBG reaches and the Upper/ Lower Landa Lake restoration reaches as set forth in revised EAHCP tables 4.1 and 4.1.1, respectively. The overall intent of native SAV restoration is to provide high quality habitat for the fountain darter.

#### Target for 2021:

Efforts in 2021 will include the planting of target native SAV to achieve annual aquatic vegetation restoration goals and to maintain existing SAV coverage. **Figure 2** illustrates the Comal Springs/ River ecosystem and identifies the Landa Lake, New Channel and Upper Spring Run LTBG reaches as well as the Upper/ Lower Landa Lake restoration reaches. The annual aquatic plant restoration goals for the Landa Lake, New Channel, and Upper Spring Run LTBG reaches and the Upper/ Lower Landa Lake restoration reaches are specified by reach and vegetation type in **Table 3**. In addition to planting the target native aquatic plants to meet annual goals, continued efforts will be made in 2021 to monitor for the re-establishment of non-native *Hygrophila* in Landa Lake, New Channel, and Upper Spring Run LTBG reaches and the Upper/ Lower Landa Lake restoration reaches. Any identified *Hygrophila* will be removed from the lake/ river.



**Figure 2:** LTBG and restoration reaches for the Comal River System. The Upper and Lower Landa Lake restoration reaches are shown in light red and blue (respectively). The Landa Lake, New Channel, and Upper Spring Run LTBG reaches are shown in red.

**Table 3:** Annual and long-term SAV restoration goals, in meters squared (m<sup>2</sup>), within Landa Lake, New Channel, and Upper Spring Run LTBG reaches and Upper/ Lower Landa Lake restoration reaches.

Reach	Aquatic Vegetation Species	Meters squared of aquatic vegetation (m²)	Annual Restoration Goal	Approximate # of plants needed to meet annual goal
		Long-term Goal	2021	2021
LTBG Reaches				
Landa Lake	Ludwigia	900	35	525-700
	Cabomba	500	30	600
	Sagittaria	2,250	0	0
	Vallisneria	12,500	75	*
	Potamogeton	25	5	30
New Channel	Ludwigia	100	15	225-300
	Cabomba	2,500	20	400
	Sagittaria	0	0	0
Upper Spring Run	Ludwigia	25	5	75-100
	Cabomba	25	5	100
	Sagittaria	850	5**	60
Restoration Reaches				
Landa Lake Upper	Ludwigia	25	0	0
	Cabomba	250	20	400
	Sagittaria	250	50**	600
Landa Lake Lower	Ludwigia	50	10	150-200
	Cabomba	125	5**	100
	Sagittaria	100	25**	1200
	Vallisneria	22,500	-	-

\**Vallisneria* will not be planted but will be allowed to naturally expand, as needed, to increase coverage.

\*\*Based on Fall 2019 mapping of SAV, coverages exceed the long-term coverage goal. No planting necessary unless declines in coverage are observed throughout the season.

## Methodology:

### *Non-Native Vegetation Management:*

Non-native SAV (i.e. *Hygrophila*) will be removed, as needed, to minimize competition with native SAV. Large-scale removal of non-native SAV will not be required in 2021 as non-native SAV has largely been eliminated from Landa Lake and the Upper Spring Run area. Restoration areas will be monitored for the re-establishment of non-native SAV. Small, localized growth of non-native SAV will be removed by selective physical extraction of visible plant and root mass.

### *Native SAV Restoration:*

Target SAV species will be planted within the Landa Lake, New Channel, and Upper Spring Run LTBG reaches to increase the coverage of individual plant species per the annual restoration goals set forth in **Table 3**. An approximate number of plants needed to achieve the annual goals is also included in **Table 3**. Individual plant species will be planted in locations within the Lake/ river

channel where light exposure, flow velocities, and substrate provide the best conditions for the individual plant types. Supplemental plantings of *Ludwigia* and *Cabomba* will be planted in existing restoration plots within the Landa Lake, New Channel, and Upper Spring Run LTBG reaches, as necessary, to maintain existing coverage or to replace any drastic losses in coverage due to floods, natural competition or other factors.

*Ludwigia* will continue to be propagated in-situ within Landa Lake in order to provide plant stock for 2021 restoration efforts. In-situ propagation of *Ludwigia* will be conducted by collecting stem cuttings from *Ludwigia* plants that exist within the Comal River system. The cuttings will be placed in pots filled with substrate collected from within the Comal River system. The potted cuttings will then be placed in Mobile Underwater Plant Propagation Trays (MUPPTs) and placed in a shallow portion of Landa Lake and allowed to produce roots and plant mass. *Ludwigia* plants propagated in the MUPPTs, as well as *Ludwigia* cuttings, will be planted in suitable locations within the Landa Lake LTBG reach to achieve an annual target of 35 m<sup>2</sup> of additional *Ludwigia* coverage at full grow out, within the New Channel LTBG reach to achieve an annual target of 15 m<sup>2</sup> of additional *Ludwigia* coverage at full grow out, and within the Upper Spring Run LTBG reach to achieve an annual target of 5 m<sup>2</sup> of additional *Ludwigia* coverage at full grow out. *Ludwigia* plants and cuttings will also be planted in suitable locations within Lower Landa Lake restoration reach to achieve an annual target of 10 m<sup>2</sup> of additional *Ludwigia* coverage. Slightly more than the targeted coverage of *Ludwigia* will be planted to account for plant die-off. Based on previous restoration experience, approximately 15-20 *Ludwigia* plants are needed to achieve 1m<sup>2</sup> of coverage. Therefore, approximately 575-700, 225-300, 75-100 and 150-200 *Ludwigia* plants will be planted in the Landa Lake LTBG, New Channel LTBG, Upper Spring Run LTBG and Lower Landa Lake Restoration reaches, respectively, to achieve target annual coverage in each reach.

*Cabomba* typically thrives in deep, low-velocity areas and will be planted in the most suitable locations in the Landa Lake LTBG reach to achieve an annual target of 30 m<sup>2</sup> of additional *Cabomba* coverage at full grow out, within the New Channel LTBG reach to achieve an annual target of 20 m<sup>2</sup> of additional *Cabomba* coverage at full grow out and within the Upper Spring Run LTBG reach to achieve an additional 5 m<sup>2</sup> of *Cabomba* coverage at full grow out. *Cabomba* will also be planted in suitable locations within the Upper and Lower Landa Lake restoration reaches, as needed, to achieve an annual target of 20 m<sup>2</sup> and 5 m<sup>2</sup> of additional *Cabomba* coverage, respectively. *Cabomba* will not be planting in the reaches where coverage has exceeded the long-term goal based on Fall 2018 SAV mapping. *Cabomba* will be planted using stem cuttings and/ or individual rooted plants. Stemmed cuttings will be collected from the New Channel and / or the spring-fed pool. The cuttings will be bundled into fist-sized bundles wrapped with rubber bands to keep bundles together. The *Cabomba* cutting bundles are typically 12 to 32 inches in length and will be planted at a depth of 2/3 their length, if possible, in soft, silty sediment. This planting depth prevents *Cabomba* from loosening and floating away and ensures multiple nodes are buried for production of good root structure. Rooted *Cabomba* will also be utilized and will be harvested from areas in the Comal River system where *Cabomba* is abundant. The rooted plants will then be planted individually. Both the stemmed cuttings and rooted plants will be planted in a grid-pattern at 1ft centers. Significantly more than the targeted coverage of *Cabomba* will be planted in order to account for plant die-off. Approximately 20 *Cabomba* plantings are needed to achieve 1m<sup>2</sup> of coverage. Therefore, approximately 600, 400, and 100 *Cabomba* plants will be planted in the Landa Lake LTBG, New Channel LTBG, and the Upper Spring Run LTBG reaches, respectively to achieve target annual coverage in each reach. Approximately 400 and 100 *Cabomba* plants will be planted in the Upper Landa Lake and Lower Landa Lake restoration reaches, respectively, to achieve target annual coverage in each reach.

*Sagittaria* will be planted only as-needed in the most suitable locations in the Upper Spring Run LTBG, Upper Landa Lake and Lower Landa Lake reaches only on an as needed basis to achieve an annual target of 5m<sup>2</sup>, 50m<sup>2</sup> and 25m<sup>2</sup> of additional *Sagittaria* coverage, respectively, at full grow out. Due to its aggressive growth habit, observed natural expansion and existing coverage, it is not anticipated that *Sagittaria* will be planted in 2021 within any of the restoration reaches. If needed, *Sagittaria* will be planted as transplants harvested from Landa Lake. The leaves of the transplants will be trimmed prior to planting to decrease buoyancy and drag. Approximately 12 *Sagittaria* plants are needed to achieve 1m<sup>2</sup> of coverage.

*Potamogeton* will be planted in the most suitable locations in the Landa Lake LTBG reach to achieve an annual target of 5 m<sup>2</sup> of additional *Potamogeton* coverage at full grow out. *Potamogeton* will be planted using bare-root rhizomes that are harvested from the Comal River system. Approximately six rhizome sections need to be planted to achieve 1m<sup>2</sup> of *Potamogeton* coverage. Therefore, approximately 30 *Potamogeton* rhizomes will be planted in the Landa Lake LTBG reach to achieve the target annual coverage.

Competition between native plants has been observed where *Vallisneria* and *Sagittaria* will encroach on and take over *Ludwigia* and *Cabomba* stands. To minimize the effects of competition and to promote the growth and spread of *Ludwigia* and *Cabomba*, buffers will be created around planted *Ludwigia* and *Cabomba* stands to the extent practicable. Any plant material that is removed during this activity will be collected and removed from the lake/ river.

Following planting of native SAV, gardening and maintenance will occur on a monthly basis between March and October to assess health of plants and to identify and remove any non-native vegetation that is beginning to establish within planting areas.

#### **Monitoring:**

Routine monitoring will occur in order to identify re-establishment of non-native aquatic vegetation. Planted areas will also be monitored to assess expansion, die-off, and competition by native and non-native aquatic plant species. Once native aquatic vegetation is established in an area, monitoring will be conducted on a less frequent basis.

Seasonal vegetation mapping in the Landa Lake, New Channel, and Upper Spring Run LTBG reaches and the Upper/ Lower Landa Lake restoration reaches will be conducted to evaluate SAV coverage and to assess progress of aquatic vegetation restoration efforts. Mapping is conducted by circling the perimeter of vegetation stands with a kayak equipped with a Trimble GPS unit. Mapping will occur in January, April, and October. The October mapping event will be used as a basis for assessing overall SAV coverage with respect to meeting long-term vegetation goals and developing annual restoration goals for 2021 and subsequent years.

#### **Budget:**

Table 7.1:

\$50,000

Available budget:

\$50,000

Estimated 2021 budget:

\$100,000

\*The increase of \$50,000 in the budget for this Conservation Measure will be offset by a decrease in the 2021 budget Old Channel Aquatic Vegetation Restoration Conservation Measure (EAHCP § 5.2.2.1).

### 5.2.3 Management of Public Recreation

Public recreational use of the Comal River ecosystems includes swimming, wading, tubing, boating, canoeing, kayaking, golfing, scuba diving, snorkeling and fishing. To minimize the impacts of incidental take resulting from recreation, the City of New Braunfels will continue to implement existing recreation control measures as specified in Section 5.2.3(1) of the EAHCP and will seek voluntary participation in the Certificate of Inclusion (COI) program from outfitters who facilitate recreation activities within the Comal River system.

#### **Long-term Objective:**

To minimize and mitigate the impacts of recreation on endangered species habitat within the Spring Runs, Landa Lake and the Comal River.

#### **Target for 2021:**

Continue to enforce existing restrictions that limit recreational access to Landa Lake, Spring Runs, and the Old Channel of the Comal River.

Inform river recreation Outfitters of the EAHCP COI program.

#### **Methods:**

The City will continue to enforce City Code Sections 86-4 and 142-5 that restrict recreational access to Landa Lake, Spring Runs, and the Old Channel. Trained Park Rangers will continue to patrol applicable areas to prevent illegal access to these waterbodies.

The City will continue to work in conjunction with EAHCP program staff to develop COI program documents and strategies. The City will reach out to local river outfitters to inform them of the COI program once a framework for the COI program is established. The COI will include the minimum requirements as specified in EAHCP § 5.2.3 (2) a-h.

#### **Monitoring:**

Monitor the status of participating outfitters to comply with the minimum COI outfitter standards and requirements set forth in EAHCP § 5.2.3.

#### **Budget:**

Table 7.1:

\$0

Available budget:

\$0

Estimated 2021 budget:

\$0

## 5.2.4 Decaying Vegetation Removal and Dissolved Oxygen Management

### **Long-term Objective:**

Maintain adequate dissolved oxygen (DO) levels within Landa Lake for the protection of the biological community, including the fountain darter. Minimize and mitigate oxygen consumption caused by decaying vegetation.

### **Target for 2021:**

Collect DO data spatially throughout Landa Lake and the Upper Spring Run during low-flow periods (<100 cfs discharge at Comal Springs). Displace floating vegetation mats, as needed, that form on Landa Lake to prevent oxygen consumption by decaying vegetation (management of floating/ decaying vegetation will be funded and accomplished through the Litter and Floating Vegetation Management Conservation Measure [EAHCP § 5.2.10]). Remove decaying vegetation from Landa Lake and Upper Spring Run during low-flow conditions (<100 cfs), as needed, to mitigate low DO levels caused by low-springflow and decaying vegetation.

### **Methods and Monitoring:**

Approximately six logging DO sensors (e.g., comparable to MiniDOT sensors available from Precision Measurement Engineering [PME Inc. Vista, CA] that have been used in prior years) will be installed in key documented fountain darter habitat areas in Landa Lake during periods when Comal Springs discharge decreases below 100 cfs. The sensor data will be downloaded and the equipment will be cleaned routinely, as needed, to prevent fouling. The main objective of this data collection is to continuously monitor DO conditions during low-flow events and prompt DO mitigation activities.

Aquatic vegetation conditions and floating vegetation mats will be visually observed on a regular basis (i.e. weekly at minimum) to assess for signs of stress, die-off. Floating aquatic vegetation and dead aquatic vegetation has the potential to cause oxygen depletion from the decomposition of the vegetation itself and from reduced atmospheric reaeration. Should vegetation die-off be observed due to low-flow or if floating vegetation mats reach impactive levels (if mats cover >25% of the mid-lake area or if individual mats are >3 meters diameter), displacement or removal of the decaying vegetation or vegetation mats will take place within one week of identification as part of Litter and Floating Vegetation Management Conservation Measure (EAHCP § 5.2.10).

If low springflow conditions (<100cfs) occur and vegetation decay or low DO is evident, intensive displacement or removal of decaying vegetation will be implemented, as appropriate, under EAHCP § 5.2.10. Intensive refers to the frequency of vegetation mat management being more than once per week. Displacement and/or removal will be conducted in the least disruptive method tested to be effective, to limit any additional DO stress from stirring, turbidity, etc.

### **Budget:**

Table 7.1:

\$15,000

Available Budget

\$15,000

Estimated 2021 budget:

\$15,000



\*To be utilized only if low-flow conditions (<100cfs) are realized at Comal Springs.

### **5.2.5/5.2.9 Non-Native Animal Species Control**

The City of New Braunfels will continue to implement a program to reduce non-native animal species in the Comal River system. The non-native animal species that will be targeted include the suckermouth armored catfish, tilapia, and nutria. Since this Work Plan has two components identified within the EAHCP, each component has been broken out to facilitate the development of the Work Plan and budgets.

#### **Long-term Objective:**

Reduce populations of non-native animal species to minimize their direct and indirect impacts to the Covered Species and the Comal River ecosystem.

#### **Target for 2021:**

Continue existing program to remove non-native invasive species, including tilapia, nutria, and suckermouth armored catfish from the Comal River system utilizing removal methods proven successful in previous years. Continue to record counts and biomass of removed species per removal effort.

#### **Methods:**

Invasive species will be removed from Landa Lake and portions of the Comal River during routine removal sessions that will occur year-round.

Tilapia and suckermouth armored catfish will be targeted throughout the Comal River system by divers with spears and spearguns. Upon removal from the water, all invasive fish will be eviscerated, in accordance with state laws, and disposed of. The carcasses will be measured (in inches) and weighed (in pounds). Total biomass of the removed fishes will be calculated. Total length of non-native fishes will also be measured to determine if, over time, the removal of adults affects target population demographics.

Box traps baited with carrots, sweet potatoes, and apples will be utilized to capture nutria. Traps will be placed in areas frequented by nutria (evident by slides, scat, chewed vegetation, lake-wall erosion and damage, and other observations). The traps will be checked in the late afternoon and again the next morning at approximately 7:30 am. Captured nutria will be euthanized. Removed nutria will be measured (in inches) and weighed (in pounds) prior to being disposed of.

#### **Monitoring:**

The non-native species removal program will involve obtaining and recording the following information:

- Date of removal.
- Number of hours worked.
- Type of species removed.
- Removal method.
- Number of individuals caught/speared.
- Total weight of individuals removed.

- Length of individuals removed.

The data provided will be used by CoNB and EAHCP staff to generate catch per unit effort and to determine the effectiveness of the removal program.

The EAA Biological Monitoring program will also assess the status of non-native species populations and any impacts of non-native removal to the Covered Species.

### ***Reduction of Non-Native Species Introduction and Live Bait Prohibition***

#### **Long-term Objective:**

Minimize the introduction of non-native species to the Comal River system.

#### **Target for 2021:**

The City will enforce Ordinance No. 2019-42, City Code Section 142-4 and 142-6 enacted to control introductions of non-native aquatic organisms to the Comal River system.

#### **Methods:**

The City will uphold the ordinance prohibiting aquarium dumping and the use of non-native aquatic bait species.

#### **Monitoring:**

The EAA Biological Monitoring program and routine non-native removal sessions will detect the presence of newly introduced species.

#### **Budget:**

Table 7.1:

\$75,000

Available budget:

\$75,000

Estimated 2021 budget:

\$40,000

### 5.2.6/6.3.6 Monitoring and Reduction of Gill Parasites

#### **Long-term Objective:**

To assess the threat of the gill parasite (*Centrocestus formosanus*) and the intestinal fluke parasite (*Haplorchis pumilio*) on fountain darter populations by monitoring parasite cercariae concentrations in the water column.

#### **Target for 2021:**

Perform parasite water column cercariae monitoring at four established monitoring transects. Analyze monitoring data to determine the overall effect and potential threat of the gill parasite and *H. pumilio* to fountain darter populations.

#### **Methods:**

To quantify the concentrations of drifting parasite cercariae in the Comal River study area, three transects (LL, OCR, RVP) that were previously sampled in 2015-2020 will be sampled in 2021. In addition, monitoring will also occur at a fourth transect at Pecan Island (PI) that was established in 2020 at the downstream end of the Pecan Island slough. The monitoring will occur once in late summer of 2021 in order to remain consistent with timing of previous years' monitoring.

**Figure 4** illustrates the parasite cercariae monitoring locations. The four sampling transects are considered locations that adequately represent the Comal Spring system and are efficient for long-term monitoring of drifting cercariae.



**Figure 4.** Parasite cercariae monitoring locations

At each of the selected transect locations, 5-L water samples will be collected from six points that are distributed throughout the water column both horizontally and vertically. For each transect, three sampling stations will be established that are equally spaced across the stream channel perpendicular to flow. At each of these stations, two 5-L samples will be collected, one approximately 5 cm from the surface and one at 60% of the depth at that location. Samples will be collected using a modified livewell pump attached to a standard flow/depth measurement rod and buckets marked at the 5-L volume. At the time of collection, each water sample will be immediately treated with 5 milliliters (ml) of formaldehyde to kill parasite cercariae, thus facilitating their capture (live cercariae can wiggle through the filter device). Filtration will involve passing the sample through a specialized filter apparatus containing three progressively finer nylon filters, the final filter having pores of 30 microns. After filtration of each sample, the 30- micron filter containing cercariae will be removed from the filtration apparatus and placed in a Petri dish. Each sample will then be stained with Rose Bengal solution and fixed with 10%

formalin, at which point the Petri dish was closed and sealed with Parafilm for storage. Cercariae on each filter will later be counted using high-power microscopy at the BIO-WEST laboratory.

**Budget:**

Table 7.1:

\$75,000

Available budget:

\$75,000

Estimated 2021 budget:

\$10,000

### **5.2.7 Prohibition of Hazardous Materials Transport Across the Comal River and Its Tributaries**

The City of New Braunfels will continue to prohibit the transport of hazardous materials on routes crossing the Comal River and its tributaries.

#### **Long-term Objective:**

To minimize the potential for accidental spills or releases of hazardous materials into the Comal River system that may cause negative impacts to the Covered Species.

#### **Target for 2021:**

Maintain existing HazMat transport signage and monitor for the presence of trucks carrying hazardous cargo on routes crossing the Comal River and its tributaries.

#### **Methods:**

City of New Braunfels Ordinance No. 93-7 effectively restricts the transport of hazardous cargo within Loop 337 and IH-35 and therefore, over roadways crossing the Comal River. Hazardous cargo route prohibition signage was installed in 2016 at key roadways near the headwaters of Landa Lake and the Comal River.

#### **Monitoring:**

Hazardous cargo restriction signage will be monitored and replaced/ repaired as needed. The City of New Braunfels Police Department will monitor for trucks carrying hazardous cargo on prohibited routes per City ordinance.

#### **Budget:**

Table 7.1:

\$0

Available budget:

\$0

Estimated 2021 budget:

\$0

## 5.2.8 Native Riparian Habitat Restoration (Comal Springs Riffle Beetle)

### Long-term Objective:

Establish a healthy, functioning riparian area along Spring Run 3 and the western shoreline of Landa Lake to benefit the Comal Springs Riffle Beetle. Establish native riparian vegetation to increase the stability of the bank, decrease erosion/ sedimentation and increase the amount of available food sources (i.e. coarse particulate organic matter) for the riffle beetle.

### Target for 2021:

Monitor and maintain previously restored riparian areas along Spring Run 3 and the western shoreline of Landa Lake. Plant additional native riparian plant species within the riparian buffer area, as needed, to increase the density of vegetative coverage in this area. Remove any re-emergent non-native vegetation and maintain sediment control berms. Replace sediment control berms and install new berms, as needed.

### Methods:

Monitor the riparian zone along Spring Run 3 and the western shoreline of Landa Lake twice/ year, once in late spring/ early summer (April-June) and once in the fall (October) to assess for the re-emergence of non-native vegetation and to monitor the status of native plants and erosion control berms.

Mechanically remove any observed re-emergent, non-native invasive plant species within the riparian zone along Spring Run 3 and along the western shoreline, as needed.

Plant supplemental native plants, as needed to increase density of riparian buffer area. Native plants will be selected based on root structure, light requirements, drought tolerance, growth habits and deer-resistance. Candidate native plant species may include, but will not be limited, to those in **Table 4**. Re-construct erosion control berms as-needed.

Monitor the stability and condition of existing sediment capture berms located along the Western Shoreline of Landa Lake. Repair and replace failing berms and install new berms as needed to help capture sediment prior to reduce sedimentation in Landa Lake.

**Table 4.** Candidate riparian plantings

Sun Species	Shade Species
Turks Cap ( <i>Malvaviscus arboreus</i> var. <i>drummondii</i> )	Turks Cap ( <i>Malvaviscus arboreus</i> var. <i>drummondii</i> )
Frostweed ( <i>Verbesina virginica</i> )	Frostweed ( <i>Verbesina virginica</i> )
Yellow Bidens ( <i>Bidens laevis</i> )	Emory Sedge ( <i>Carex emoryi</i> )
Swamp Milkweed ( <i>Asclepias incarnata</i> )	Boneset/ Mistflower ( <i>Ageratina havanensis</i> )
Switchgrass ( <i>Panicum virgatum</i> )	Elderberry ( <i>Sambucus canadensis</i> )
Bushy bluestem ( <i>Andropogon glomeratus</i> )	Giant spiderwort ( <i>Tradescantia gigantea</i> )
Emory Sedge ( <i>Carex emoryi</i> )	Texas aster ( <i>Symphyotrichum drummondii texanum</i> )
Sweetscent ( <i>Pluchea odorata</i> )	Red salvia ( <i>Salvia coccinea</i> )
Elderberry ( <i>Sambucus canadensis</i> )	Buttonbush ( <i>Cephalanthus occidentalis</i> )
Yellow compass plant ( <i>Silphium integrifolium radulum</i> )	Inland Sea Oats ( <i>Chasmanthium latifolium</i> )
Texas bluebells ( <i>Eustoma exaltatum</i> )	

### Budget:

Table 7.1:  
\$25,000

Available budget:  
\$25,000

Estimated 2021 budget:

## **\$5,000 5.2.10 Litter and Floating Vegetation Control**

### **Long-term Objective:**

Minimize the impacts of floating vegetation mats and litter on aquatic vegetation and endangered species habitat in Landa Lake, the Spring Runs, and the upper portion of the Old Channel. Mitigate low dissolved oxygen levels in Landa Lake caused by decaying vegetation. Minimize shading of and negative impacts to aquatic vegetation caused by floating vegetation mats.

### **Target for 2021:**

Dislodge floating vegetation mats and remove litter from applicable portions of the Comal River system to prevent negative impacts to flow control structures, aquatic vegetation, and endangered species habitat. In the event of low-flow conditions or receipt of depressed dissolved oxygen levels in Landa Lake, the removal of and/or increased efforts to dislodge floating vegetation mats will be initiated to prevent oxygen consumption by decaying vegetative material.

### **Methods:**

*Floating Vegetation Mat Management:* Floating vegetation mats are commonly observed within Landa Lake and are composed primarily of macrophyte fragments, algae, bryophytes and terrestrial debris. The vegetation mats are naturally occurring and are the result of natural processes. Maintenance activities associated with floating vegetation mats in Landa Lake will involve dislodging floating mats and facilitating migration of the mats downstream of Landa Lake. Any litter found within floating vegetation mats will be removed prior to dislodging. Maintenance of floating vegetation mats will occur on a weekly basis between March and September and on an as-needed basis during the remainder of the year. Floating vegetation mats will be dislodged from flow control structures, the Three Islands area, fishing pier and other locations where vegetation mats accumulate and negatively impact native aquatic vegetation. Additional efforts to displace and/ or remove floating and decaying vegetation will occur during low-flow conditions (<100cfs) and/ or when low dissolved oxygen levels are observed in order to further mitigate impacts to dissolved oxygen and native aquatic vegetation.

*Litter Management:* (March 1<sup>st</sup> to October 30<sup>th</sup>). Litter pickup within the riparian zone along the Old Channel and the Spring Runs will occur on a bi-monthly basis (twice/ month) between March 1<sup>st</sup> and October 30<sup>th</sup>. Litter will also be removed from within the Old Channel and Spring Runs to the extent that it can be removed with a 10ft trash grabber. Removed litter will be quantified and reported on a monthly basis.

### **Monitoring:**

Monitor litter and floating vegetation mats in applicable areas on a weekly basis and more frequently if low-flow conditions occur. DO concentrations will be monitored by EAA and as part of the Decaying Vegetation Removal and Dissolved Oxygen Mgmt Conservation Measure



(EAHCP § 5.2.4). City staff will monitor contractor efforts and coordinate additional efforts when deemed necessary.

**Budget:**

Table 7.1:

\$0

Available budget:

\$0

Estimated 2021 budget:

\$25,000

### **5.2.11 Golf Course Management and Planning**

The City of New Braunfels will implement their existing Integrated Pest Management Plan (IPMP) for Landa Park Golf Course. This process will incorporate public input and the Golf Course Advisory Board. The golf course IPMP will incorporate environmentally sensitive techniques to minimize chemical application, continue to improve water quality, and reduce negative effects to the ecosystem. Expanded water quality sampling targeted at Golf Course operations will be conducted as described in Section of 5.7.2 of the EAHCP.

**Long-term Objective:**

To manage the golf course and grounds in a way that minimizes negative impacts to the aquatic ecosystem in Landa Lake and the Comal River.

**Target for 2021:**

Continue to implement the IPMP and update as needed.

**Methods:**

The golf course and grounds will be maintained in an aesthetically pleasing, yet environmentally sensitive manner. It is the responsibility of the Golf Course Manager to maintain the course and grounds in accordance with the new IPMP. The IPMP describes chemicals and methods for controlling pests (i.e. insects, weeds, and other living organisms requiring control) on the golf course in a way that does not negatively impact water quality or endangered species.

**Monitoring:**

The EAHCP Water Quality Monitoring Program monitors surface water, groundwater, and fish tissue for a range of contaminants to collect information on the water quality of Comal Springs and associated surface waters.

**Budget:**

Table 7.1:

\$0

Available budget:

\$0

Estimated 2021 budget:

\$0



### 5.7.1 Native Riparian Habitat Restoration

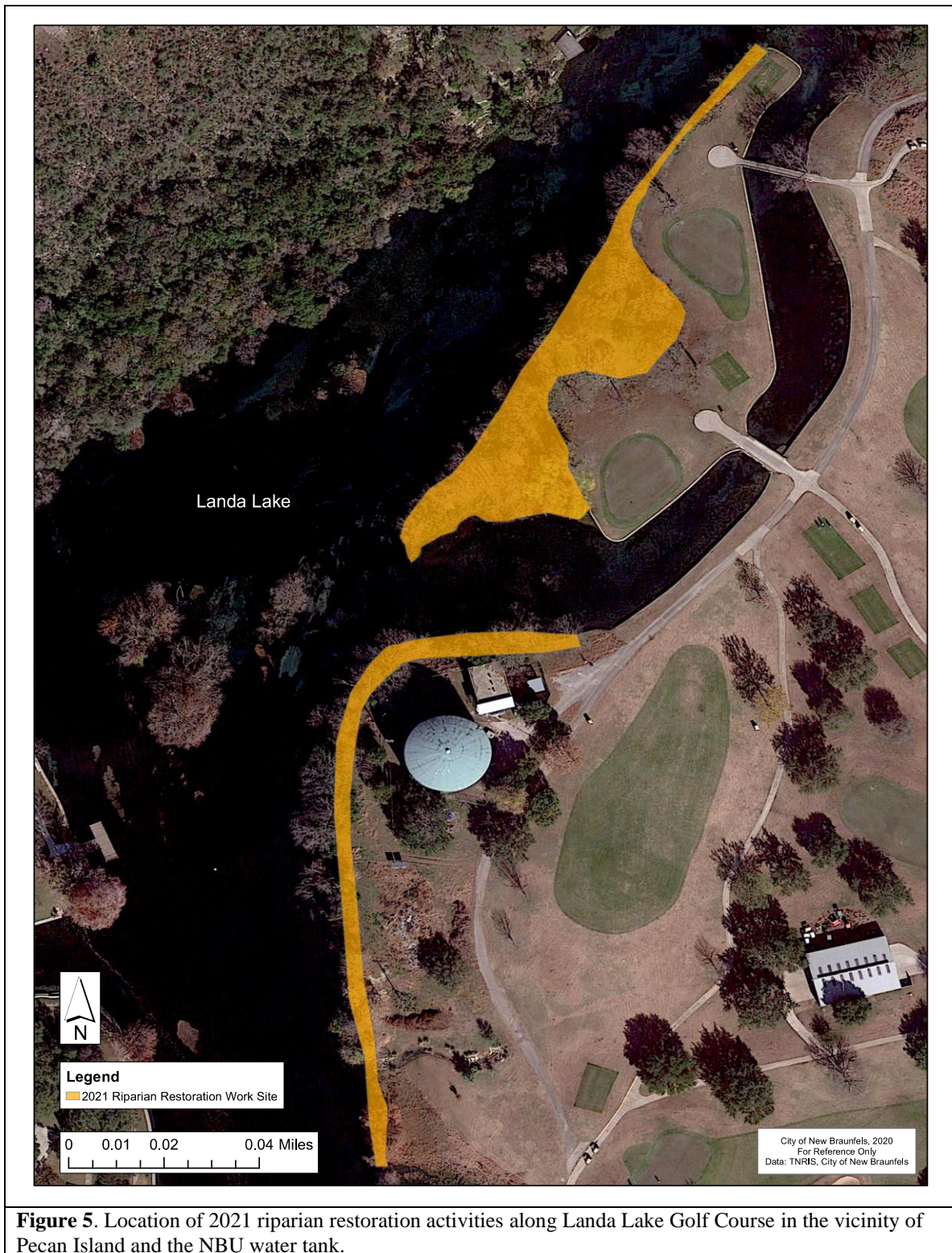
#### **Long-term Objective:**

Increase the area and density of native riparian vegetation, reduce non-native riparian vegetation, and prevent streambank erosion in areas immediately adjacent to the Comal River and Landa Lake to complement aquatic vegetation restoration efforts and to help protect water quality.

#### **Target for 2021:**

Remove non-native riparian vegetation (i.e. *Ligustrum*, Chinese Tallow and Elephant Ears) from the banks of Landa Lake along the Landa Park Golf Course, install sediment capture berms and plant native vegetation. The target work area would extend along the bank of Landa Lake from Pecan Island to the Old Channel flow control gates (**Figure 5**).

Remove non-native vegetation (primarily Elephant Ear and *Ligustrum*) on Comal County Water Recreation District #1 (CCWRD#1) property along the banks of the upper portion of Landa Lake and the small island adjacent to “the Island” park (**Figure 6**), install sediment capture berms and plant native vegetation.







Monitor and maintain riparian areas where non-native riparian vegetation was treated/ removed in previous years to prevent re-establishment. Monitor and maintain previously planted areas to assess condition of riparian vegetation and promote the establishment/ growth of native vegetation. Plant additional native plants, and/ or grasses, as needed, to replace dead plantings or to vegetate bare areas. Maintenance of restored areas in Landa Park may include the installation of permanent fencing, as needed, to prevent disturbance of restored areas by park visitors.

## Methods:

### *Invasive Species Management:*

Non-native riparian vegetation along the banks of Landa Lake will be treated using an aquatic-approved herbicide. Elephant ears will be treated in small sections to minimize overall herbicide usage and to minimize soil/ bank disturbance over large areas. Non-native trees will be cut and removed and remaining tree stump treated with aquatic-approved herbicide.

Monitor areas where non-native plants were removed in previous years. Re-treat and remove re-emergent non-native vegetation.

### Native Plant Restoration:

Install sediment control berms in locations where non-natives are to be treated. Following the successful treatment/ removal of non-native vegetation and installation erosion control berms, native plants will be installed. Native plants will be selected based on sun exposure, proximity to the stream, growth habit, and ability to withstand deer browsing. Plant restoration will occur in small sections to ensure establishment of planted areas prior to expanding restoration efforts to adjacent areas. Candidate native plant species may include those in **Table 5 and 6.**

**Table 5.** Candidate riparian plantings for Landa Lake Golf Course

<b>Trees and Shrubs</b>	<b>Herbaceous</b>
American Beautyberry ( <i>Callicarpa americana</i> )	Coral Honeysuckle ( <i>Lonicera sempervirens</i> )
Bald Cypress ( <i>Taxodium distichum</i> )	Creeping Spotflower ( <i>Acmella repens</i> )
Bee Brush ( <i>Eysenhardtia texana</i> )	Emory Sedge ( <i>Carex emoryi</i> )
Black Walnut ( <i>Juglans nigra</i> )	Frog Fruit ( <i>Phyla nodiflora</i> )
Burr Oak ( <i>Quercus macrocarpa</i> )	Frostweed ( <i>Verbesina virginica</i> )
Buttonbush ( <i>Cephalanthus occidentalis</i> )	Horse Herb ( <i>Calypocarpus vialis</i> )
Elderberry ( <i>Sambucus canadensis</i> )	Inland Sea Oats ( <i>Chasmanthium latifolium</i> )
Eve's Necklace ( <i>Styphnolobium affine</i> )	Switchgrass ( <i>Panicum virgatum</i> )
Fragrant Sumac ( <i>Rhus aromatica</i> )	Texas Lantana ( <i>Lantana urticoides</i> )
Green Ash ( <i>Fraxinus pennsylvanica</i> )	Turks Cap ( <i>Malvaviscus arboreus</i> var. <i>drummondii</i> )
Mexican Buckeye ( <i>Ungnadia speciosa</i> )	Water Willow ( <i>Decodon verticillatus</i> )
Mexican Plum ( <i>Prunus mexicana</i> )	White Boneset ( <i>Eupatorium serotinum</i> )
Mountain Laurel ( <i>Sophora secundiflora</i> )	Yellow Bidens ( <i>Bidens</i> sp.)
Possum Haw Holly ( <i>Ilex ambigua</i> )	Woodland Sedge ( <i>Carex blanda</i> )
Red Buckeye ( <i>Aesculus pavia</i> )	Zexmenia ( <i>Wedelia acapulcensis</i> var. <i>hispida</i> )
Red Mulberry ( <i>Morus rubra</i> )	
Dwarf Palmetto ( <i>Sabal minor</i> )	
Soapberry ( <i>Sapindus drummondii</i> )	
Sycamore ( <i>Platanus occidentalis</i> )	
<b>Grasses</b>	<b>Forbs</b>
Buffalo Grass ( <i>Buchloe dactyloides</i> )	Texas Bluebonnet ( <i>Lupinus texensis</i> )
Eastern Gamagrass ( <i>Tripsacum dactyloides</i> )	Purple Prairie Clover ( <i>Dalea purpurea</i> )
Green Sprangletop ( <i>Leptochloa dubia</i> )	Partridge Pea ( <i>Chamaechaerista fasciculata</i> )
Prairie Wildrye ( <i>Elymus canadensis</i> )	Texas Yellow Star ( <i>Lindheimera texana</i> )
Switchgrass ( <i>Panicum virgatum</i> )	Gayfeather ( <i>Liatris mucronata</i> )
Little Bluestem ( <i>Schizachyrium scoparium</i> )	White Prairie Clover ( <i>Dalea candida</i> )
Blue Grama ( <i>Bouteloua gracilis</i> )	Lemon Mint ( <i>Monarda citridora</i> )
Sideoats Grama ( <i>Bouteloua curtipendula</i> )	Plains Coreopsis ( <i>Coreopsis tinctoria</i> )
Curly Mesquite ( <i>Hilaria belangeri</i> )	Indian Blanket ( <i>Gaillardia pulchella</i> )
Indiangrass ( <i>Sorghastrum nutans</i> )	Tall Goldenrod ( <i>Solidago altissima</i> )
Texas Cupgrass ( <i>Eriochloa sericea</i> )	
Sand Dropseed ( <i>Sporobolus cryptandrus</i> )	
Sand Lovegrass ( <i>Eragrostis trichodes</i> )	
Big Bluestem ( <i>Andropogon gerardii</i> )	
Cane Bluestem ( <i>Bothriochloa barbinodis</i> )	
White Tridens ( <i>Tridens albescens</i> )	
Western Wheatgrass ( <i>Pascopyrum smithii</i> )	
Bushy Bluestem ( <i>Andropogon glomeratus</i> )	

**Table 6** Candidate riparian plantings for Comal County Recreation District #1 Property

<b>Trees</b>	<b>Perennials</b>
American Sycamore ( <i>Platanus occidentalis</i> )	Coral Honeysuckle ( <i>Lonicera sempervirens</i> )
Bald Cypress ( <i>Taxodium distichum</i> )	Creeping Spotflower ( <i>Acmella repens</i> )
Eastern Red Cedar ( <i>Juniperus virginiana</i> )	Emory Sedge ( <i>Carex emoryi</i> )
Cedar Elm ( <i>Ulmus crassifolia</i> )	Frog Fruit ( <i>Phyla nodiflora</i> )
Burr Oak ( <i>Quercus macrocarpa</i> )	Damianita ( <i>Chrysactinia mexicana</i> )
Eastern Cottonwood ( <i>Populus deltoides</i> )	Fall Aster ( <i>Symphyotrichum oblongifolium</i> )
Retama ( <i>Parkinsonia aculeata</i> )	Four Nerve Daisy ( <i>Tetrameuris scaposa</i> )
Eve's Necklace ( <i>Styphnolobium affine</i> )	Frogfruit ( <i>Phyla nodiflora</i> )
Texas Redbud ( <i>Cercis canadensis</i> var. <i>texensis</i> )	Texas Lantana ( <i>Lantana urticoides</i> )
Anacacho Orchid Tree ( <i>Bauhinia lunaroides</i> )	Turks Cap ( <i>Malvaviscus arboreus</i> var. <i>drummondii</i> )
Mountain Laurel ( <i>Sophora secundiflora</i> )	Horsetail Reed ( <i>Equisetum hyemale</i> )
Texas Persimmon ( <i>Diospyros texana</i> )	Meahly Blue Sage ( <i>Salvia farinacea</i> )
American Sycamore ( <i>Platanus occidentalis</i> )	Missouri Primrose ( <i>Oenothera macrocarpa</i> )
	Orange Zexmenia ( <i>Wedelia acapulcensis</i> var. <i>hispida</i> )
	Pidgeonberry ( <i>Rivina humilis</i> )
	Rock Rose ( <i>Pavonia lasiopetala</i> )
	Snake Herb ( <i>Dyschoriste linearis</i> )
	Tropical Sage ( <i>Salvia coccinea</i> )
<b>Grasses</b>	<b>Shrubs/ Understory Plants</b>
Woodland Sedge ( <i>Carex blanda</i> )	American Beautyberry ( <i>Callicarpa americana</i> )
Eastern Gamagrass ( <i>Tripsacum dactyloides</i> )	Buttonbush ( <i>Cephalanthus occidentalis</i> )
Lindheimer Muhly ( <i>Muhlenbergia lindheimeri</i> )	Coralbean ( <i>Erythrina herbacea</i> )
Bushy Bluestem ( <i>Andropogon glomeratus</i> )	Elderberry ( <i>Sambucus canadensis</i> )
Switchgrass ( <i>Panicum virgatum</i> )	Evergreen Sumac ( <i>Rhus virens</i> )
Little Bluestem ( <i>Schizachyrium scoparium</i> )	Fragrant Mimosa ( <i>Mimosa borealis</i> )
Sideoats Grama ( <i>Bouteloua curtipendula</i> )	Fragrant Mistflower ( <i>Ageratina havanensis</i> )
Inland Sea Oats ( <i>Chasmanthium latifolium</i> )	Indigobush ( <i>Amorpha fruticosa</i> )
	Kidneywood ( <i>Eysenhardtia texana</i> )
<b>Misc</b>	Mexican Buckeye ( <i>Unghadia speciosa</i> )
Lindheimer Marsh Fern ( <i>Thelypteris ovata</i> )	Palmetto ( <i>Sabal minor</i> )
Maidenhair Fern ( <i>Adiantum capillus</i> )	Possumhaw ( <i>Ilex decidua</i> )
Beargrass ( <i>Nolina lindheimeriana</i> )	Red Buckeye ( <i>Aesculus pavia</i> )
Texas Sotol ( <i>Dasylirion texanum</i> )	Skunkbush ( <i>Rhus aromatica</i> var. <i>trilobata</i> )
Alamo Vine ( <i>Merremia dissecta</i> )	Texas Sage ( <i>Leucophyllum frutescens</i> )
Coral Honeysuckle ( <i>Lonicera sempervirens</i> )	Yaupon ( <i>Ilex vomitoria</i> )
	Yellow Bells ( <i>Tecoma stans</i> )

**Monitoring:**

Previously restored riparian areas will be monitored for the re-emergence of non-native vegetation and success of native plantings. Sediment capture structures will be monitored for effectiveness. Monitor native riparian plantings for success. A riparian assessment will be conducted in the spring and Fall to evaluate the condition of the riparian zone.

**Budget:**

Table 7.1:  
\$100,000

Available budget:  
\$100,000

Estimated 2021 budget:  
\$85,000



## 5.7.5 Management of Household Hazardous Wastes

### **Long-term Objective:**

To minimize the potential for improper disposal of hazardous wastes and associated negative impacts to endangered species in the Comal River system.

### **Target for 2021:**

Hold three household hazardous waste (HHW) collection events in New Braunfels. Continue to partner with New Braunfels Utilities (NBU) on the Operation MedSafe drug recovery program.

### **Methods:**

Conduct three HHW collection events that incorporate an education and outreach component. The HHW events are coordinated by City's Solid Waste Division in conjunction with Comal County. Each HHW event costs approximately \$40,000-\$45,000 which includes event set-up and HHW disposal costs. The average cost of a HHW collection event is \$40,385 based on HHW from 2018 and 2019. The cost of the first two HHW events is shared evenly between the City and Comal County. The EAHCP program will fund the third event.

The HHW collection events are held at the New Braunfels City Hall. Hazardous waste that is collected during the HHW collection events will be hauled off and disposed of by Clean Harbors.

The City is continuing to explore the feasibility of implementing a HHW drop-off facility that will accept HHW on an ongoing basis throughout the year. Currently, it is expected that a HHW drop-off facility will be opened within three years. The facility will likely be open to the public 1-2 days/ week for the drop-off of HHW.

The New Braunfels Police Department partners with NBU to host an annual medicine drop-off event in New Braunfels. The CONB website also contains information about the Operation MedSafe event and tips on proper disposal of medications and drugs.

### **Monitoring:**

The volume of hazardous waste material collected and the number of participants for each HHW collection event will be documented.

### **Budget:**

Table 7.1:

\$30,000

Available budget:

\$30,000

Estimated 2021 budget:

\$40,385

## 5.7.6 Impervious Cover/Water Quality Protection

### Long-term Objective:

To reduce non-point source pollutant discharges to Landa Lake and the Comal River system.

### Target for 2021:

The City will construct a bio-retention basin or similar stormwater treatment facility at the intersection of Landa Park Drive and Elizabeth Avenue to treat and infiltrate stormwater runoff from the adjacent paved street segment and parking lot.

### Methods:

As part of the City's 2020 EAHCP workplan, the City is working with an engineer to design a stormwater treatment facility to capture and treat stormwater runoff from adjacent paved surfaces that include a street segment (Elizabeth Ave) and an adjacent parking lot. The project will be constructed in conjunction with a City project that involves the realignment of Elizabeth Avenue and an existing parking lot.

Final design of the stormwater treatment facility is expected to be completed in late 2020 and the City will solicit for a construction contractor in early 2021. The actual construction cost will be dependent on the bid pricing of the selected contractor. The City will assume responsibility of the ongoing maintenance of the stormwater treatment facility following construction.

### Budget:

Table 7.1:

\$100,000

Available budget:

\$100,000

Estimated 2021 budget:

\$ \$100,000