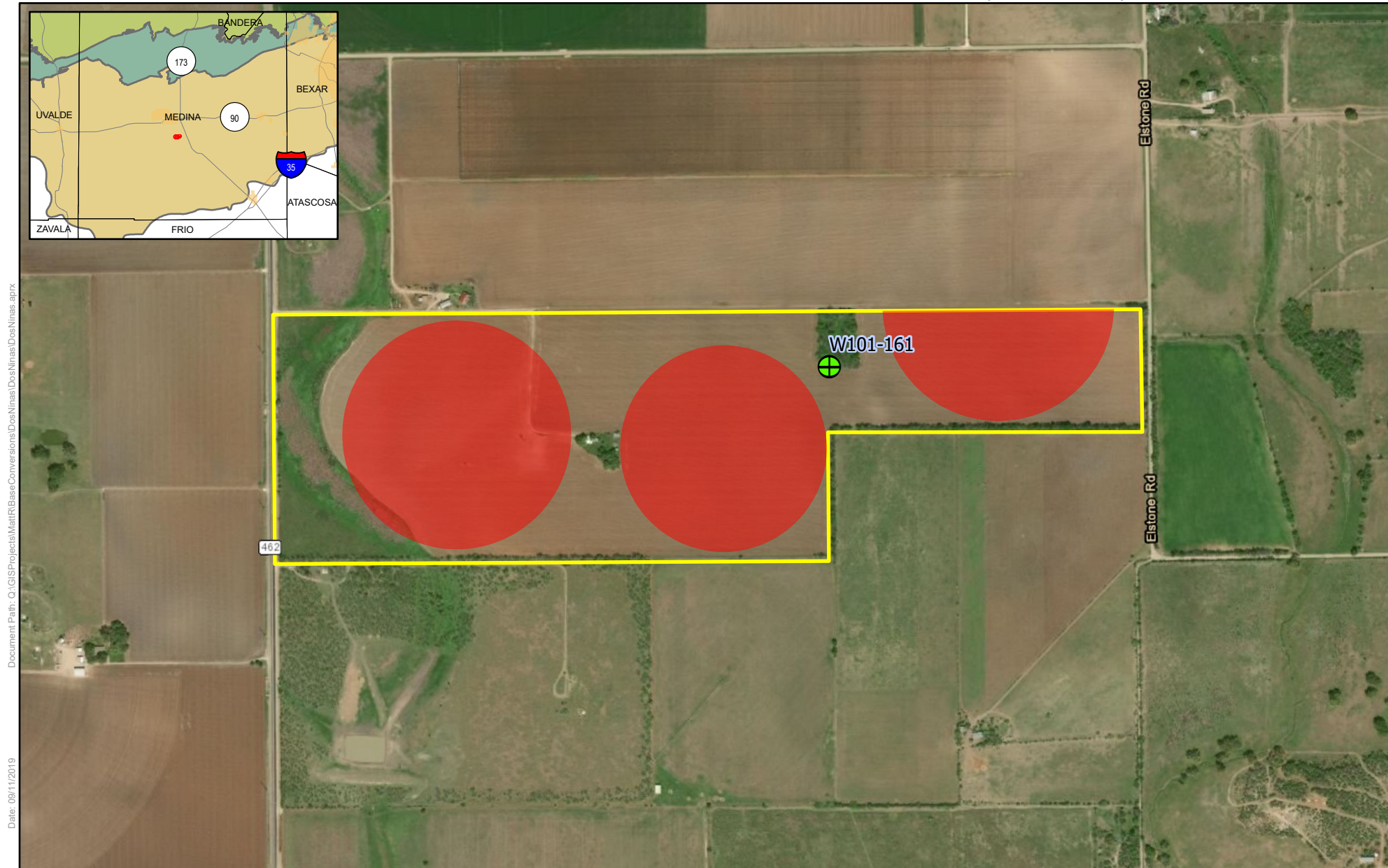


Exhibit A: Dos Ninas, LP Conversion Map P100-135 (T109-848)



Document Path: Q:\GIS\Projects\Map\Bases\Conversions\DosNinas\DosNinas\DosNinas.aprx
Date: 09/11/2019

Spatial Reference
PCS: NAD 1983 NSRS2007 Texas Centric Mapping System Albers
GCS: GCS NAD 1983 NSRS2007
Datum: NAD 1983 NSRS2007
Projection: Albers



Reference Scale: 1:10,000

83.605 Acres Under Pivot
 156.109 Acres Historically Irrigated

Service Layer Credits: World Imagery: Source: Esri, DigitalGlobe, GeoEye, Earthstar Geographics, CNES/Airbus DS, USDA, USGS, AeroGRID, IGN, and the GIS User Community
World Transportation: Esri, HERE, Garmin, (c) OpenStreetMap contributors



Disclaimer: This map was created for demonstrative use by the Edwards Aquifer Authority (EAA) and not intended for other purposes. This map is to be used as an informational tool only; it is not suitable for projects requiring survey accuracy; data accuracy is not guaranteed.