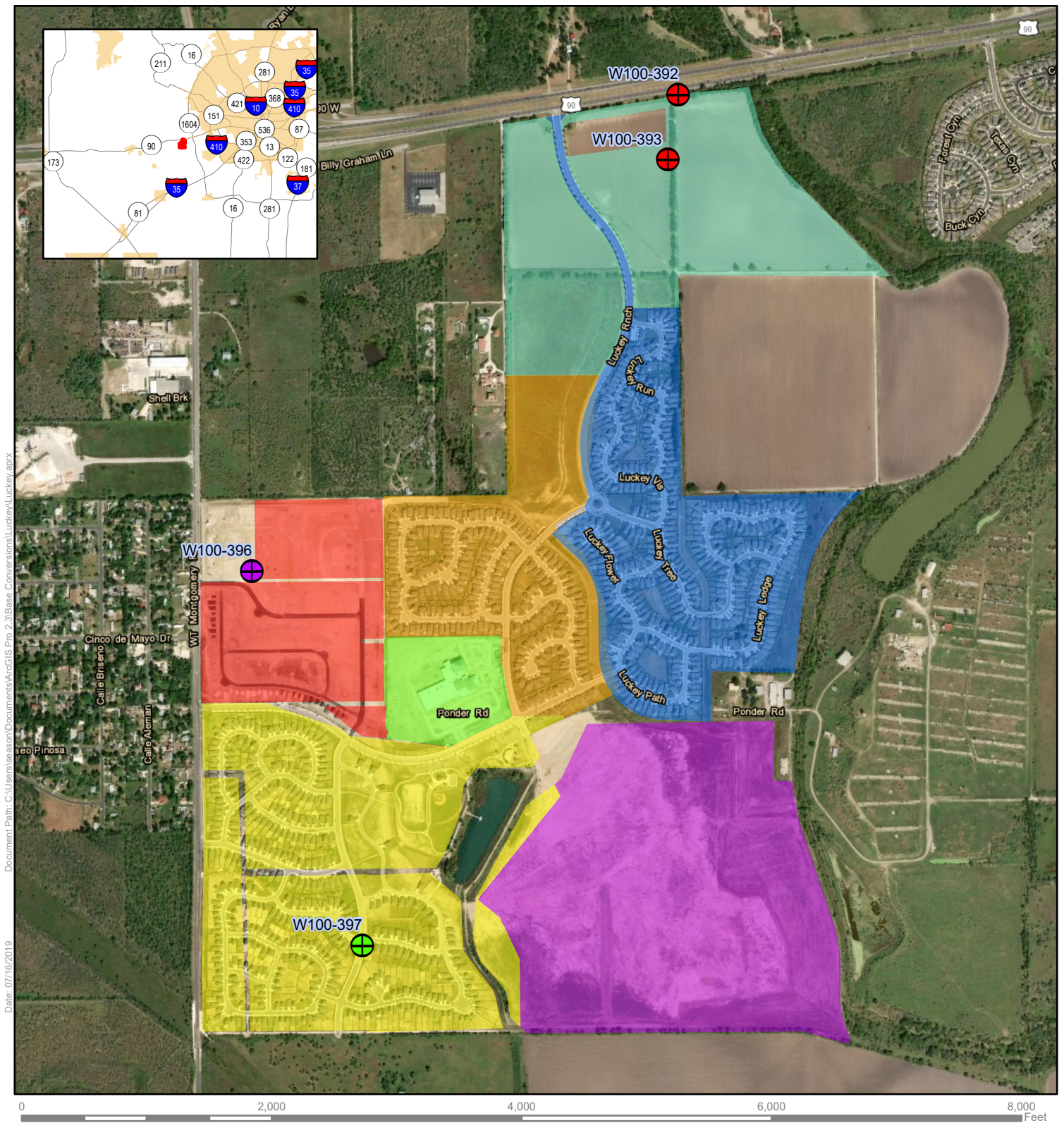


Exhibit A: LGI Homes of Texas LLC Conversion Map



Spatial Reference
 PCS: NAD 1983 NSRS2007 Texas Centric Mapping System Albers
 GCS: GCS NAD 1983 NSRS2007
 Datum: NAD 1983 NSRS2007
 Projection: Albers

Service Layer Credits: World Transportation: Esri, HERE, Garmin, (c)
 OpenStreetMap contributors
 World Imagery: TX Orthoimagery Program, USDA FSA, DigitalGlobe,
 GeoEye, CNES/Airbus DS

- Proposed Conversion of Base (88.57 ac. +/-)
 LGI Homes - Texas, LLC, a Texas limited liability company
- Conversion of Base Approved 6/13/2017
 (18.871 ac. +/-) Medina Valley ISD
- Conversion of Base Approved 05/09/2017 (49.003 ac. +/-)
 LGI Homes-Texas, LLC.
- Conversion of Base Approved 10/13/2014 (120.800 ac. +/-)
 Lucky Ranch Partners, LLC.
- Conversion of Base Approved 11/12/2013 (54.510 ac. +/-)
 Lucky Ranch Global Associates
- Conversion of Base Approved 5/10/2011 (132.710 ac. +/-)
 LGI Homes-Texas, LLC, a Texas limited liability company
- Conversion of Base Approved 5/10/2011 (92.20 ac. +/-)
 LGI Homes-Lucky Ranch, LLC

N
 Reference Scale: 1:13,000

Disclaimer: This map was created for demonstrative use by the Edwards Aquifer Authority (EAA) and not intended for other purposes.
 This map is to be used as an informational tool only; it is not suitable for projects requiring survey accuracy; data accuracy is not guaranteed.

