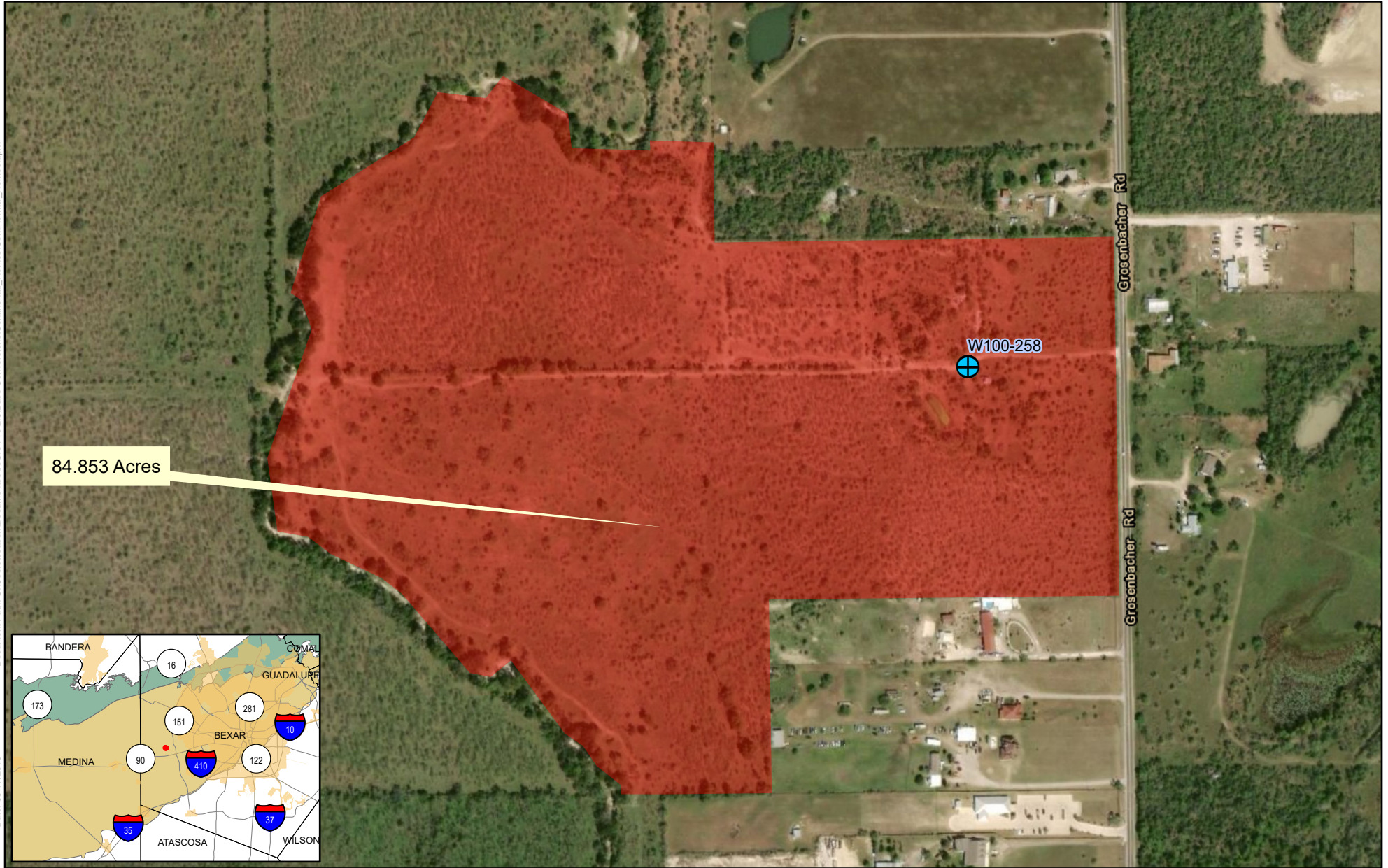


# Exhibit A: P106-939 (BE00317) Continental Homes of Texas, L.P.

Document Path: C:\Users\season\Documents\ArcGIS\Pro 2.3\Base Conversions\Continental\_Homes\Continental\_Homes.aprx

Date: 05/17/2019



84.853 Acres

W100-258

Grosenbacher Rd

Grosenbacher Rd

0 1,000 2,000 3,000 Feet

Spatial Reference  
PCS: NAD 1983 NSRS2007 Texas Centric Mapping System Albers  
GCS: GCS NAD 1983 NSRS2007  
Datum: NAD 1983 NSRS2007  
Projection: Albers



Reference Scale: 1:5,000

84.853 Acres

Service Layer Credits: World Imagery: Source: Esri, DigitalGlobe, GeoEye, Earthstar Geographics, CNES/Airbus DS, USDA, USGS, AeroGRID, IGN, and the GIS User Community  
World Transportation: Esri, HERE, Garmin, (c) OpenStreetMap contributors



Disclaimer: This map was created for demonstrative use by the Edwards Aquifer Authority (EAA) and not intended for other purposes. This map is to be used as an informational tool only; it is not suitable for projects requiring survey accuracy; data accuracy is not guaranteed.