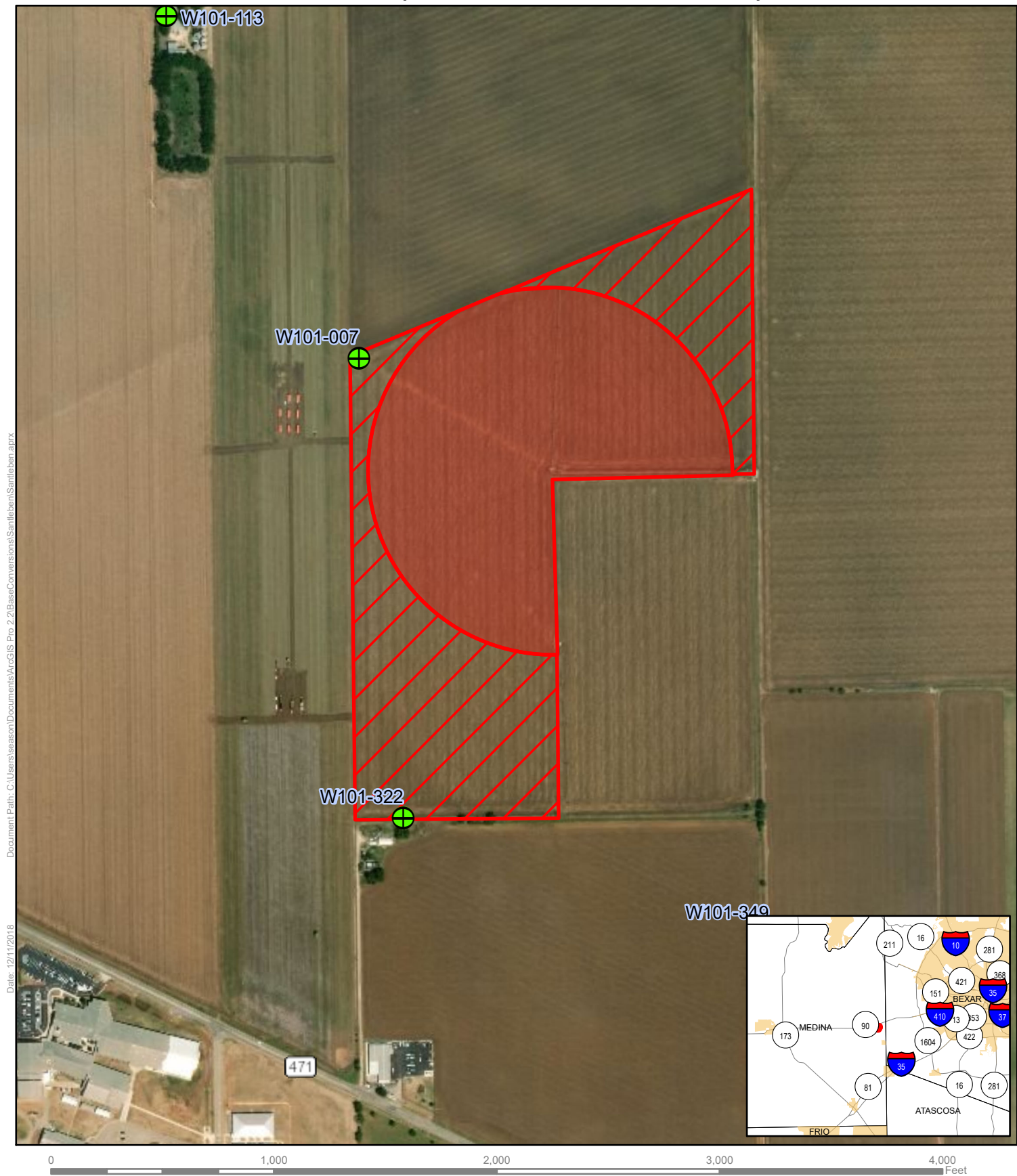


F & M Santleben Properties, Ltd. Conversion Map: Exhibit A



Spatial Reference
PCS: NAD 1983 NSRS2007 Texas Centric Mapping System Albers
GCS: GCS NAD 1983 NSRS2007
Datum: NAD 1983 NSRS2007
Projection: Albers



- Place of Use Acreage: 71.4
- Acreage Under Pivot: 37.54
- Acreage Subject to Corner Credit: 32.84

Service Layer Credits: World Imagery: TX Orthoimagery Program, USDA
FSA, DigitalGlobe, GeoEye, CNES/Airbus DS
World Transportation: Esri, HERE, Garmin, © OpenStreetMap contributors



Disclaimer: This map was created for demonstrative use by the Edwards Aquifer Authority (EAA) and not intended for other purposes.
This map is to be used as an informational tool only; it is not suitable for projects requiring survey accuracy; data accuracy is not guaranteed.