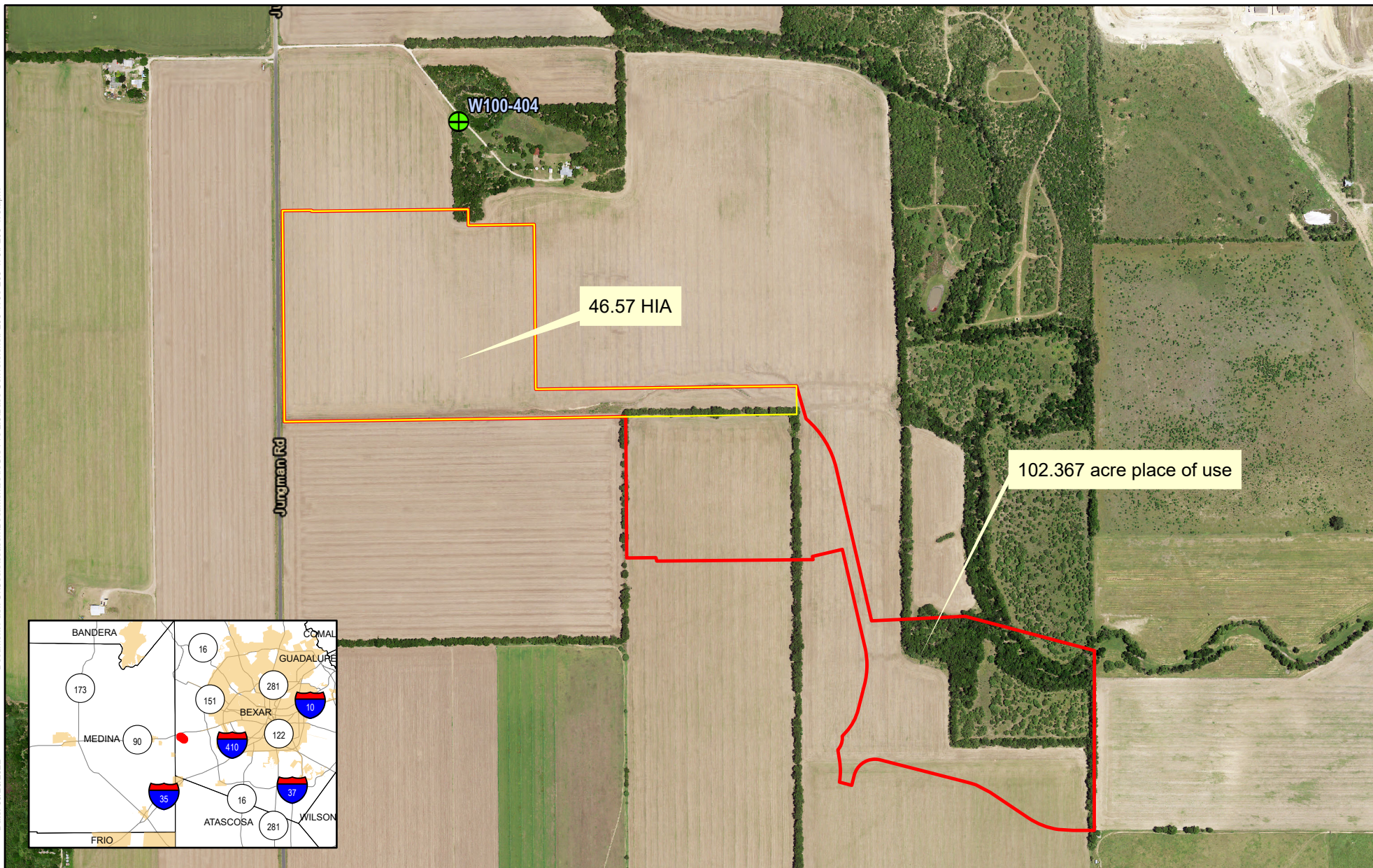


Exhibit A: P200-470 (BE00212) Arroyo Cap II-2, LLC

Document Path: C:\Users\season\Documents\ArcGIS Pro 2.9\Base Conversions\P200-470\P200-470.aprx

Date: 05/25/2022



Spatial Reference
 PCS: NAD 1983 NSRS2007 Texas Centric Mapping System Albers
 GCS: GCS NAD 1983 NSRS2007
 Datum: NAD 1983 NSRS2007
 Projection: Albers

Service Layer Credits: World Transportation: Esri, HERE, GeoTechnologies, Inc.
 Imagery: June 13, 2020
 Source: NAIP



Reference Scale: 1:8,500

- 46.57 base acres with 48.213 BIG
- 102.367 acre place of use



Disclaimer: This map was created for demonstrative use by the Edwards Aquifer Authority (EAA) and not intended for other purposes. This map is to be used as an informational tool only; it is not suitable for projects requiring survey accuracy; data accuracy is not guaranteed.