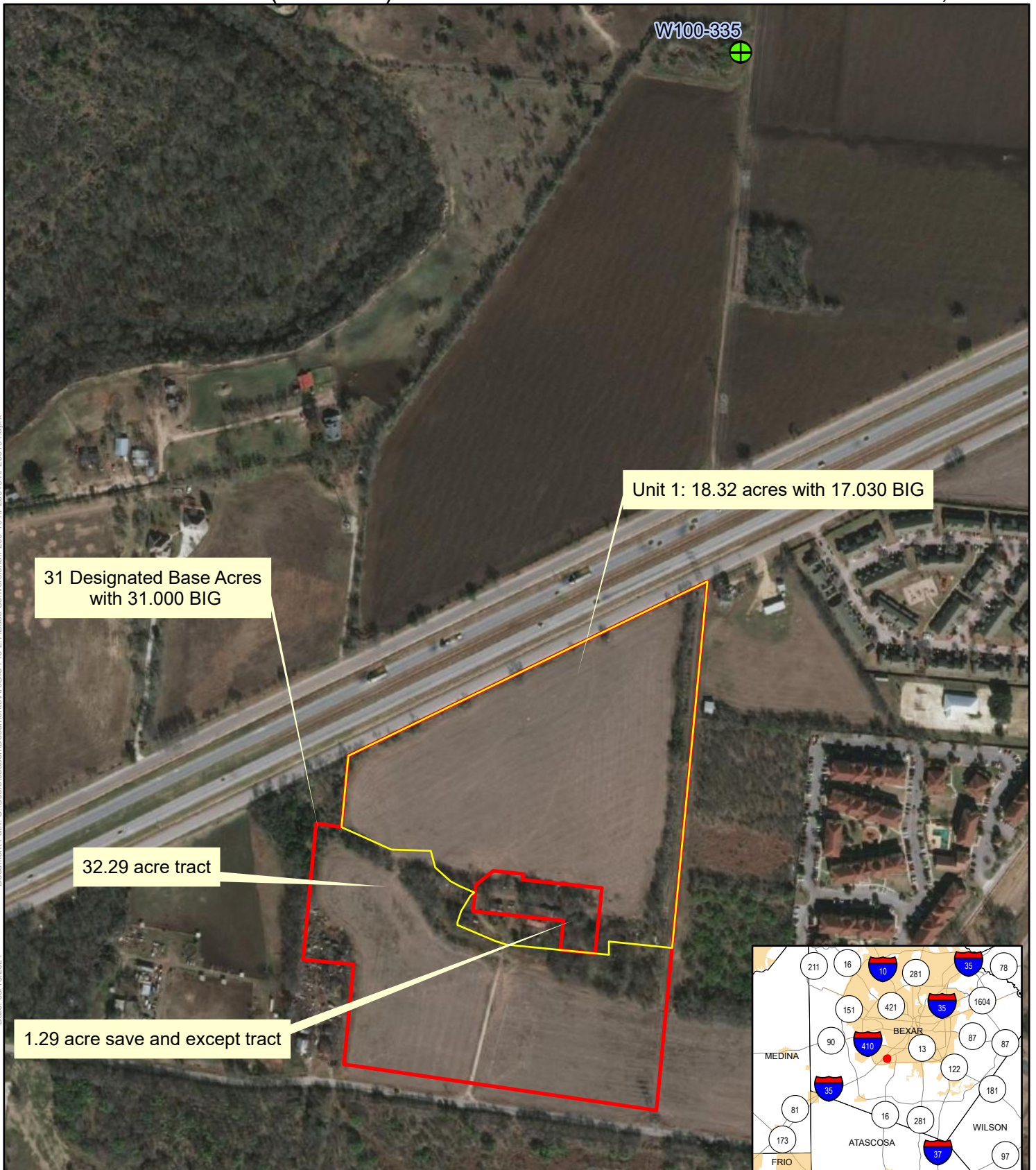


Exhibit A: P200-194 (BE00176) Lennar Homes of Texas Land and Construction, Ltd.

Document Path: C:\Users\season\Documents\ArcGIS Pro 2.7\Bases Conversions\200-194\200194\200194.aprx

Date: 05/18/2021



Spatial Reference
 PCS: NAD 1983 NSRS2007 Texas Centric Mapping System Albers
 GCS: GCS NAD 1983 NSRS2007
 Datum: NAD 1983 NSRS2007
 Projection: Albers



- Unit 1: 18.32 acres with 17.030 BIG
- 31 Designated Base Acres with 31.000 BIG

Disclaimer: This map was created for demonstrative use by the Edwards Aquifer Authority (EAA) and not intended for other purposes. This map is to be used as an informational tool only; it is not suitable for projects requiring survey accuracy; data accuracy is not guaranteed.

