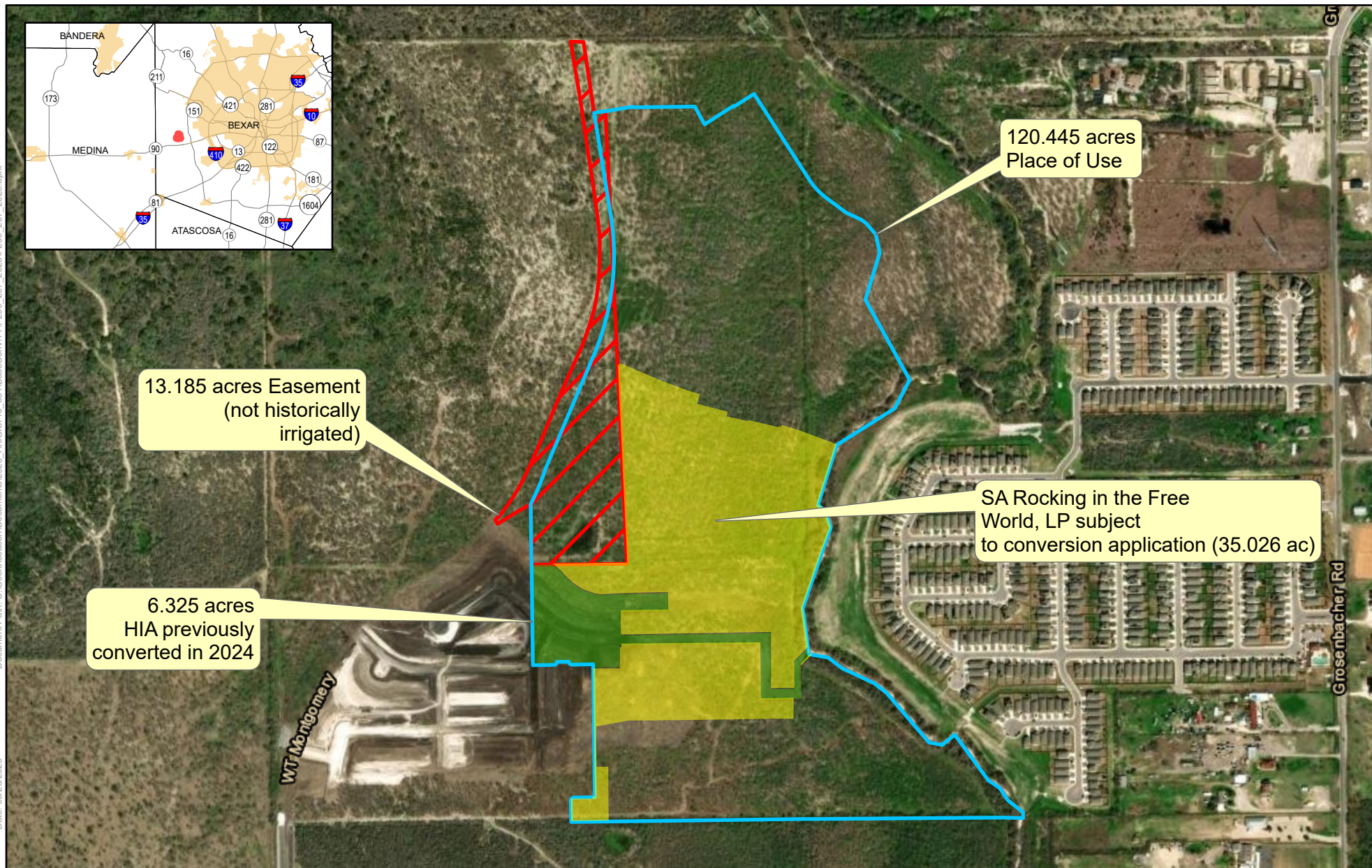


Exhibit A: P200-207 (BE00317) SA Rocking in the Free World, LP

Document Path: C:\Users\season\Documents\2025_ArcGISPro_331\BasesCon\TTP200_207_2025\P200_207_2025.aprx

Date: 03/26/2025



Spatial Reference
 PCS: NAD 1983 NSRS2007 Texas Centric Mapping System Albers
 GCS: GCS NAD 1983 NSRS2007
 Datum: NAD 1983 NSRS2007
 Projection: Albers

Service Layer Credits: World Transportation: Esri, HERE, iPC
 World Imagery: Maxar



Reference Scale: 1:8,000

- SA Rocking in the Free World, LP subject to conversion application (35.026 acres)**
- 120.445 acres Place of Use**
- 13.185 acres Easement (not historically irrigated)**
- 6.325 acres HIA previously converted in 2024**



Disclaimer: This map was created for demonstrative use by the Edwards Aquifer Authority (EAA) and not intended for other purposes. This map is to be used as an informational tool only; it is not suitable for projects requiring survey accuracy; data accuracy is not guaranteed.