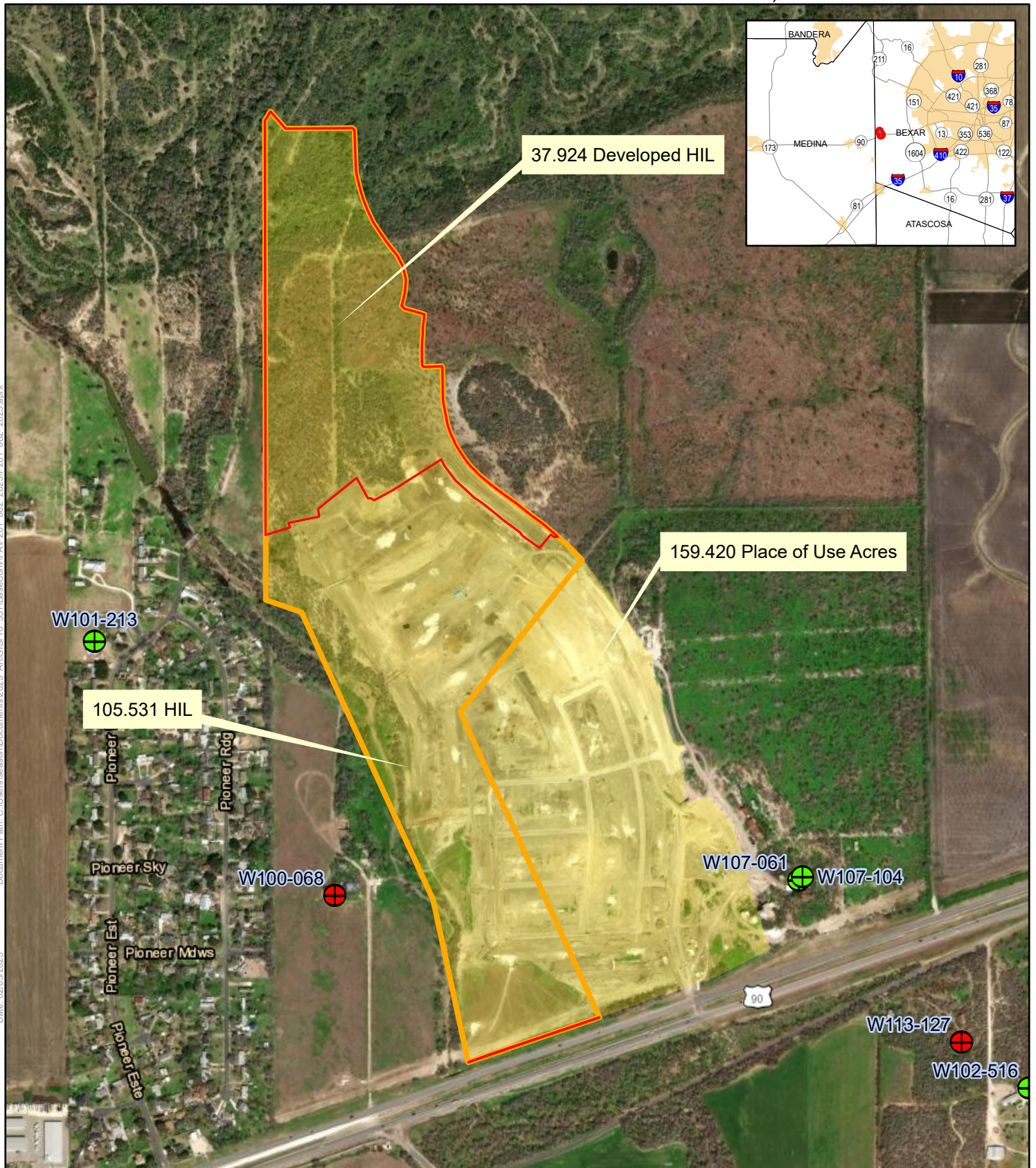


Exhibit A: P201-062 Continental Homes of Texas, L.P.



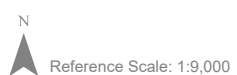
Document Path: C:\Users\season\Documents\2025 ArcGISPro_3311\BaseConv\PA\P201_062_2025\PA\P201_062_2025.aprx
Date: 02/03/2025



Spatial Reference
 PCS: NAD 1983 NSRS2007 Texas Centric Mapping System Albers
 GCS: GCS NAD 1983 NSRS2007
 Datum: NAD 1983 NSRS2007
 Projection: Albers

Service Layer Credits: World Transportation: Esri, HERE, iPC
 World Imagery: Maxar

- 159.420 Place of Use Acres
- 37.924 Developed HIL
- 105.531 HIL



Disclaimer: This map was created for demonstrative use by the Edwards Aquifer Authority (EAA) and not intended for other purposes. This map is to be used as an informational tool only; it is not suitable for projects requiring survey accuracy; data accuracy is not guaranteed.

