

Edwards Aquifer Authority

2026 Work Plan

2026 Edwards Aquifer Authority Work Plan Budget

EAHCP Section	Conservation Measure	Table 7.1	Estimated 2026 Budget^a
5.1.1	Refugia	\$1,678,597	\$1,344,758
5.1.2	VISPO	\$4,172,000 ^b	\$8,654,550 ^c
5.1.3	RWCP	\$493,250	\$0
5.1.4	Stage V	NA	NA
5.5.1	ASR Leasing & Forbearance	\$4,759,000	\$5,651,894
	ASR O&M	\$2,194,000	\$0
5.7.2	Water Quality Monitoring	\$200,000	\$65,000
6.3.1	Biological Monitoring	\$400,000	\$755,774 ^d
6.3.3	Ecological Model	\$25,000	\$0
6.3.4	Applied Research	\$0	\$250,000
FMA §2.2	Program Management	\$750,000	\$1,440,632
Total		\$14,671,847	\$18,162,608

- a. Estimated annual work plan cost per Funding and Management Agreement § 4.4.
- b. Dollars in Table 7.1 of the EAHCP were calculated from a volume goal of 40,000 acre-feet (ac-ft). The volume goal was amended to 41,795 ac-ft in 2019 and Table 7.1 dollars are no longer applicable.
- c. On October 1, 2025, the VISPO program was triggered, resulting in suspension payments totaling \$8,654,550.
- d. Includes Critical Period Monitoring if required.

2026 Edwards Aquifer Authority (EAA) Work Plan and Funding Application Amendments

Amendment #	Date EAHCP Committee Approved	Conservation Measure Amended	Y/N Funding Application Change	Funding Application Change (\$)	Date EAA Board Approved	Comments
0	5/22/2025	Original Work Plan	NA	NA	NA	Original Work Plan
0	10/9/2025	2026 Funding Application	NA	NA	11/11/2025	Original Funding Application
1	10/9/2025	ASR Leasing & Forbearance, VISPO, and Program Management	NA	NA	NA	Updated Work Plan with updated program activities and/or costs for ASR Leasing & Forbearance, VISPO, and Program Management
2	Pending 2/5/2026	Refugia	N	N	NA	Updated Refugia research activities and collection plans.

5.1.1 Refugia Program

Introduction

The U.S. Fish and Wildlife Service's (USFWS) San Marcos Aquatic Resources Center (SMARC) and Uvalde National Fish Hatchery (UNFH) will provide refugia, salvage, reintroduction, and monitoring services in fulfillment of the Refugia Contract (Contract # 16-822-HCP) between the Edwards Aquifer Authority (EAA) and the USFWS.

This annual work plan and associated cost estimate have been developed per the requirements of contract number 16-822-HCP for the Implementation of the Refugia Program under the Edwards Aquifer Habitat Conservation Plan (EAHCP). The tasks and subtasks that follow provide the details for the services to be performed in 2026, which provide for the maintenance of a refugia population of the Covered Species (Table 1), including salvage, propagation, and restocking of the species (if species-specific habitat triggers occur and species are extirpated), plus research conducted on the Covered Species.

Table 1: Eleven species identified in the EAHCP and listed for coverage under the ITP.

Common Name	Scientific Name	ESA Status
Fountain darter	<i>Etheostoma fonticola</i>	Endangered
Comal Springs riffle beetle	<i>Heterelmis comalensis</i>	Endangered
Comal Springs dryopid beetle	<i>Stygoparnus comalensis</i>	Endangered
Peck's cave amphipod	<i>Stygobromus pecki</i>	Endangered
Texas wild rice	<i>Zizania texana</i>	Endangered
Texas blind salamander	<i>Eurycea rathbuni</i>	Endangered
San Marcos salamander	<i>Eurycea nana</i>	Threatened
Edwards Aquifer diving beetle	<i>Haideoporus texanus</i>	Petitioned
Comal Springs salamander	<i>Eurycea pterophila</i>	Petition Rescinded
Texas troglotic water slater	<i>Lirceolus smithii</i>	Petition Rescinded

Long-term Objective

Background: Section 5.1.1 of the EAHCP requires the EAA to provide a series of refugia, with back-up populations, to preserve the capacity for these species to be re-established in the event of the loss of population due to a catastrophic event.

The concept of refugia is to house and protect adequate populations of the Covered Species and to conduct research activities to expand knowledge of their habitat requirements, biology, life histories, and effective reintroduction techniques. Actions and funding contained within this work plan will be limited to the Covered Species listed in the EAHCP and those associated species that have significant impact on the Covered Species such as predators, prey, competitors, pathogens, parasites; or on their habitat, including food, water, and shelter.

2026 Assumptions

As work plans are developed almost a year prior to implementation, it is possible that methods described herein will be contingent on the status of the current year's activities or authorization from the HCP process. If conditions change, this work plan may need to be amended to accommodate realized outcomes.

The following potential situations could necessitate methodology adjustments:

- Target numbers for standing and refugia stocks to be housed at both the UNFH and SMARC deviate from those established by the USFWS-EAA Refugia Contract (Contract # 16-822-HCP).
- Species capture rates fall short of historic values.
- Mortality rates of specimens held in captivity exceed historic values.
- Staff member vacancies occur at either of the two Service facilities during the performance period.
- A pandemic or other emergency prevents scheduled collections.

Target for 2026 (Deliverables and Methods by Task):

Task 1. Refugia Operations

Standing Stocks: USFWS staff will take all appropriate steps to collect and maintain standing/refugia stocks at their respective target captive population size to provide refugia for all the Covered Species. Table 2 contains the target species numbers.

Table 2. Target refugia numbers and census by species.

Species	Standing Stock	Refugia Stock	Salvage Stock	Anticipated SMARC census (Jan 2026)	Anticipated SMARC census (Dec 2026)	Anticipated UNFH census (Jan 2026)	Anticipated UNFH census (Dec 2026)
Fountain darter (Comal)	1000	1000†	2000	500	500	500	500
Fountain darter (San Marcos)	1000	1000†	2500	500	500	500	500
Texas wild rice	430	430†	1500	215	215	215	215
Texas Blind Salamander	500	500†	500	250	250	60	80
San Marcos salamander	500	500†	500	250	250	250	250
Comal Springs salamander	500	500†	500	60	60	120	120
Peck's cave amphipod	500	500†	500	250	250	250	250
Comal Springs riffle beetle	500	500†	500	75	75	75	75
Comal Springs dryopid beetle	500	500†	500	*	20	*	20
Edwards Aquifer diving beetle	500	500†	500	*	*	*	*
Texas troglobitic water slater	500	500†	500	*	*	*	*

† Includes specimens within standing stock

*Catch rates and hatchery survival are uncertain given the rarity of the species.

Collection: The USFWS will collect Covered Species as required to reach and maintain target standing and refugia stock numbers as shown in Table 2. If possible, the USFWS will avoid collections during July and August when temperatures are high and flow is low, resulting in increased stress for priority species during collections, with the exception of Texas blind salamanders and San Marcos salamanders collected from the Diversion Spring net in Spring Lake. The USFWS will coordinate species collections with other ongoing HCP activities (e.g., Biological Monitoring Program) so that collections for refugia do not adversely impact other efforts. The USFWS will carry out species collections through a variety of passive and active collection methods and will minimize aquatic invasive species transfer by conducting collections in accordance with a Hazard Analysis Critical-Control Point Plan. The USFWS will document and report collection efforts to the EAA. The USFWS will distribute captured organisms between the SMARC and UNFH facilities to ensure redundancy and to expedite the obligation to establish and maintain two refugia populations at separate locations. The USFWS will hold all species in respective quarantine areas until their health has been assessed. Staff will incorporate quarantined organisms into the general refugia population once they have determined that such specimens are healthy and free from **non-target** species. The USFWS will share reports, including test results, produced as part of the quarantine process.

The following sections briefly describe planned 2026 collection, maintenance, and propagation efforts for each species.

Fountain Darters:

Collection: The USFWS will collect fountain darters from the San Marcos River and the Comal River in coordination with the Spring and Fall Biomonitoring events. This will be more efficient than separate collection events and will reduce habitat disturbance. For refugia purposes, USFWS staff will retain fountain darters collected by biomonitoring staff via drop nets. Staff will collect fish proportionally from the three sections of the San Marcos River: 1) Upper = Spring Lake, 2) Middle = Spring Lake dam to Rio Vista dam, and 3) Lower = below Rio Vista dam to Cape's Dam. The USFWS will thoroughly investigate unusual mortality events. The USFWS will include summary reports to the EAA as part of the monthly reports. Collections will target sufficient fish so to account for regular, expected mortality, such that the captive population should remain at or above the target.

Due to the detection of largemouth bass virus (LMBV) in Comal fountain darters throughout the Comal River, the USFWS will maintain all fountain darters from Comal River in quarantine facilities, in consideration of other species on the two stations. We have continued concern over higher mortality rates of incoming Comal fountain darters, as no root cause has been identified despite extensive testing and evaluation with the USFWS Fish Health Unit.

As part of quarantine procedures, the USFWS will send a subset of fish (maximum of 60 per river) to the Southwestern Fish Health Unit or equivalent facility for pathogen (bacteria, virus, and parasite) testing prior to incorporating collected animals into the general refugia population. The USFWS will follow standardized methods outlined within USFWS and AFS-FHS (2016) and AFS-FHS (2005) protocols and provide Fish Health reports to the EAA.

Maintenance: The USFWS will monitor water quality (i.e., temperature, pH, dissolved oxygen, total dissolved gasses) and record these data weekly. Staff will feed fountain darters a mix of live and frozen foods reared or purchased. The USFWS will rear zooplankton and amphipods in ponds and tanks for food. We do not generally examine food items for pathogens. However, if they are suspect and tested for pathogens, the USFWS will include all diagnostic results to the EAA within monthly reports.

Propagation: The USFWS will maintain standing and refugia stocks for each river to produce captive-bred fish for research purposes, as necessary and approved. Staff will maintain fish by their geographical collection location. If reintroduction is warranted, the USFWS will communally spawn subsets from each geographical location.

Texas wild rice:

Collection: USFWS staff will collect Texas wild rice tillers from San Marcos River segments (Figure 1), with a break during summer months when collected wild rice does not fare well due to heat stress. Staff will target stands and genetic variants that are not already part of the refugia population or require supplementation in collections for SMARC and UNFH. The refugia populations will reflect the wild populations in both their respective proportion, based on the most recent Texas wild rice survey data and genetic assessments of wild and refugia populations (2021 genetic assessment and Wilson et al. 2016). During tiller collection, the USFWS will record the geographic coordinates, area coverage, and depth of the stand or individual plant. USFWS staff will collect tillers by wading and SCUBA diving. The USFWS will consider georeferenced aerial imagery to help identify distinct TWR stands used for tiller collection.

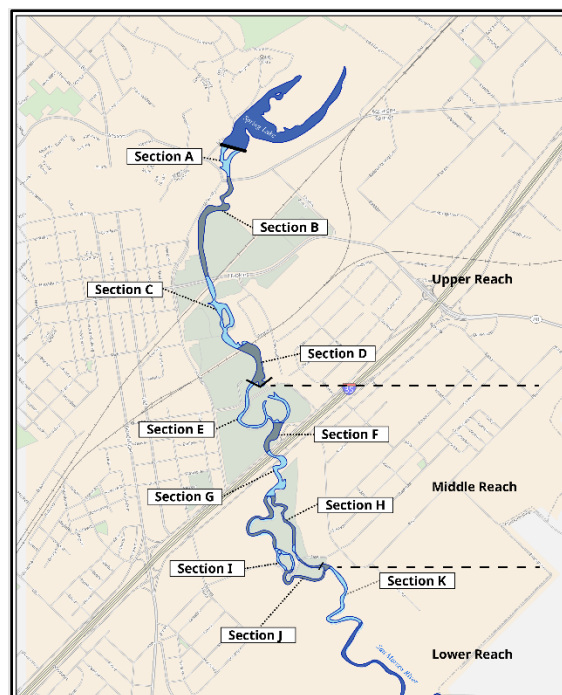


Figure 1. Letters define designated San Marcos River reaches where Texas wild rice is collected for refugia populations.

Maintenance: USFWS staff will tag and maintain plants with their collection date and location information.

Propagation: USFWS staff will maintain plants to prevent sexual reproduction within the refugia population, unless EAHCP triggers occur. If reintroduction is warranted, USFWS staff will produce seeds and tillers from plants collected from each geographical location. During reintroduction, staff will transplant plants produced from seeds and tillers to their original source location, delineated by river section (Figure 1).

Texas blind salamanders:

Collection: USFWS will collect Texas blind salamanders using nets and traps. Staff will deploy traps quarterly for approximately 14 consecutive days with traps checked every 2-4 days to collect Texas blind salamander individuals from Primers Fissure and Johnson's well (Table 5). To avoid oversampling these habitats, staff will only collect 1/2 of salamanders observed from each of these locations during quarterly sampling events. Texas blind salamanders will be checked for tail clips and/or p-Chips to collect reoccurrence data. Staff will also collect salamanders from a driftnet on Diversion Springs in Spring Lake throughout the year during times when we are not actively trapping in caves and wells. We will retain all specimens from this site, under the assumption that any Texas blind salamander leaving a spring orifice that enters a stream or lake environment will ultimately succumb to predation. We will check these sites up to three times per week when applicable. Staff will transport all specimens alive and maintain them in the SMARC or UNFH refugia. Texas State University staff may check drift nets on Texas State University Artesian Well a few times a year for 14 consecutive days. Texas State University transfers live Texas blind salamanders to SMARC according to their permits, when appropriate. USFWS staff may periodically check nets on these sites when they are not being checked by Texas State University staff.

Health Testing: Texas blind salamanders are known to carry *Batrachochytrium dendrobatidis* (Bd), a fungal disease listed by Animal and Plant Health Inspection Service (APHIS) as a reportable exotic disease under the United States National List of Reportable Animal Diseases (NLRAD) as prescribed Title 9 of the Code of Federal Regulations (CFR) part 57. The NLRAD regulation means that the USFWS has a legal obligation to report detections of this disease. We also have a professional obligation to follow the USFWS Fish Health Policy, which includes an Exotic Disease Eradication Plan (713 FW 3). Project leaders at UNFH and SMARC have the responsibility to assist in the development, and comply with, site-specific aquatic animal cultural sanitation and decontamination plans covering the provision of the Fish Health Policy, including the exotic disease eradication plan.

As part of quarantine procedures, USFWS staff will swab all large Texas blind salamanders. If they are too small to be swabbed, then we will do a representative batch swab of group-housed salamanders once they are large enough to be safely swabbed. USFWS staff will process these samples at SMARC or other facility to screen for *Batrachochytrium dendrobatidis* (Bd, commonly referred to as chytrid fungus) and *Batrachochytrium salamandrivorans* (Bsal) prior to

specimen incorporation into the general refugia population. Staff will retain duplicate swabs for no more than 5 years in case further testing is warranted. Staff will hold all salamanders in quarantine for at least 30 days and until test results have returned. Previous tests of wild caught salamanders at SMARC (both Texas Blind and San Marcos salamanders) have regularly tested positive for Bd. Positive testing for Bsal will be treated more cautiously as it has not yet been documented in North America. Staff would retain such salamanders in quarantine until further study and recommendations from FWS Fish Health.

Maintenance: USFWS staff will individually tag salamanders to retain information on collection location, date, and other life history events. Staff will monitor water quality and record data weekly. Staff will feed salamanders live and frozen foods, either reared or purchased. Staff will utilize culture systems to produce *Daphnia* on site.

Propagation: Staff will maintain standing and refugia stocks to encourage reproduction. Staff will maintain all progeny separately by generations. If reintroduction is warranted, an attempt will be made to produce offspring from adults collected at each geographical location and offspring will be reintroduced back to the geographic location once they are 30mm total length.

San Marcos salamanders:

Collection: USFWS staff will collect San Marcos salamanders in the Spring and Fall, avoiding breeding season and the hot summer months, from Hotel Springs, below Spring Lake dam (Eastern Spillway) and with SCUBA teams in Spring Lake (Table 5). Staff will check the drift net on Diversion Springs routinely and keep specimens from this location as need allows. We will avoid collections close to the HCP Biological Monitoring Program assessment events. Staff will transport all specimens alive and maintain these in the SMARC and UNFH refugia.

As part of quarantine procedures, USFWS staff will swab San Marcos Salamanders for disease testing. If they are too small to be swabbed, we will do a representative batch swab of group housed salamanders once they are large enough to be safely swabbed. USFWS staff will process these samples at SMARC or other facility to screen for Bd and Bsal prior to specimen incorporation into the general refugia population. Staff will retain duplicate swabs in case further testing is warranted. Chytrid testing will occur in batches where groups of five swabs will be pooled for analysis. Staff will hold all salamanders in quarantine for at least 30 days and until test results have returned. Positive testing for Bsal will be treated more cautiously as it has not yet been documented in North America.

Maintenance: Staff will monitor water quality and record data weekly. Staff will feed salamanders live foods, either reared or purchased, mixed with purchased frozen food sources if necessary. Staff will utilize ponds and tanks to produce amphipods on site.

Propagation: USFWS staff will maintain salamander standing and refugia stocks to encourage reproduction. We will separate all progeny by generation. If reintroduction is warranted, staff will employ pairwise and group mating of adults from each geographic location to produce

offspring. Staff will initiate stocking to each geographic location once juveniles have reached 30 mm total length.

Comal Springs salamanders:

Collection: USFWS staff will collect Comal Springs salamanders monthly except July and August, from Spring Island and surrounding areas (Table 5) by hand, with dipnets, using snorkelers. Comal Springs salamanders are more difficult to collect than San Marcos salamanders and require more frequent collections to reach Standing Stock goals. We will coordinate with the HCP biological monitoring program to ensure to the degree practicable, refugia collections do not overlap with specific EAHCP long-term monitoring locales. If overlap is unavoidable, we will collect Comal salamanders at a rate of no more than 10% of salamanders observed in those specific locales per daily sampling trip. We will employ a SCUBA team for a portion of these collection efforts if necessary.

As part of quarantine procedures, USFWS staff will swab all large Comal Springs salamanders. If they are too small to be swabbed, we will do a representative batch swab of group housed salamanders once they are large enough to be safely swabbed. USFWS staff will process these samples at SMARC or other facility to screen for Bd and Bsal prior to incorporation into the general refugia population. Staff will retain duplicate swabs for no more than 5 years in case further testing is warranted. Chytrid testing will occur in batches where groups of five swabs will be pooled for analysis. Staff will hold all salamanders in quarantine for at least 30 days and until test results have returned. Clinically, the salamanders appear normal and do not have any lesions or signs of disease. Positive testing for Bsal will be treated more cautiously as it has not yet been documented in North America. Staff would retain such salamanders in quarantine until further study and recommendations from FWS Fish Health.

Maintenance: Staff will monitor water quality and record data weekly. Staff will feed salamanders live and frozen foods, either reared or purchased. Staff will utilize culture systems to produce *Daphnia* on site.

Propagation: USFWS staff will maintain salamander standing stock to encourage reproduction. We will separate all progeny by generation. If reintroduction is warranted, staff will employ pairwise and group mating to produce offspring. Staff will initiate stocking once juveniles have reached 30 mm in total length.

Comal Springs riffle beetle:

Collection: USFWS staff will collect Comal Springs riffle beetle for standing stocks five times a year from a variety of locations, including Spring Run 1, Spring Run 3, the Western Shore, and areas surrounding Spring Island (Table 5). Staff will collect riffle beetles from poly-cotton lures following EAHCP standard operating procedures (Hall 2016) and from wood, as needed. Staff will follow protocols established by the CSRB Work Group in 2019:

1. Staff will not sample the same spring orifice two times in a row.
2. Staff will collect all riffle beetle adults and larvae from lures.

The Comal Springs Riffle Beetle Work Group will evaluate standing stock numbers yearly. Additional collections for research purposes may be required outside of standing stock collections.

Maintenance: USFWS staff will maintain specimens by collection date and geographic area. Staff will hold Comal Springs riffle beetles within custom built aquatic holding units and feed them detrital matter and matured biofilms colonized on cotton lures, wood dowels, and leaf matter.

Propagation: USFWS staff will maintain Comal Springs riffle beetle standing stock in flowthrough tubes to encourage reproduction. If warranted, captive propagated larva will be reintroduced to each geographic area.

Peck's cave amphipod:

Collection: USFWS will conduct Peck's cave amphipod collection for standing stock seven times annually, if needed (Table 5). Staff will collect adult Peck's cave amphipods with drift nets and by hand at a variety of locations (drift nets: Spring Run 3, twice a year; Spring Island and associated Spring Island habitats: hand collection). EARP staff will avoid collecting the summer months.

Maintenance: Staff will maintain specimens by collection date within custom-built aquatic holding units and feed amphipods with commercial flake fish food.

Propagation: Propagation methods for this species are being developed as part of standard refugia operations.

Comal Springs dryopid beetle:

Collection: USFWS will conduct 10 dedicated collections for Comal Springs dryopid beetles, often coinciding with Peck's cave amphipod or Comal Springs salamander collections. Opportunistic collections will occur if dryopid beetles are present during Comal Springs riffle beetle lure checks. Dryopid beetles will be collected primarily through wooden lures and hand picking from submerged wood found in the Comal Spring system. If staff find dryopid beetles on poly-cotton lures used for Comal Springs riffle beetles, these will be retained (Table 5). We will potentially conduct two trapping events with bottle traps in Panther Canyon Well during the year as access to the well and staff time allows. Staff will check these traps weekly for a month.

Maintenance: USFWS will combine collected Comal Springs dryopid beetles, regardless of collection location. Staff will hold Comal Springs dryopid beetles within custom built aquatic

holding units and feed them detrital matter and matured biofilms colonized on cotton lures, wood dowels, and leaf matter.

Propagation: Propagation methods for this species are being developed as part of normal refugia operations and research projects.

Edwards Aquifer diving beetle:

Collection: Edwards Aquifer diving beetles have been collected in the past at the Texas State University Artesian Well and Diversion Springs. USFWS staff will accept Edwards Aquifer diving beetles during drift net checks at the Artesian Well when as Texas State University encounters them.

Maintenance: USFWS will combine collected Edwards Aquifer diving beetles, regardless of collection location. Staff will transfer captured specimens to the SMARC or UNFH and house them in custom-made aquatic holding systems. Edwards Aquifer diving beetles are predators; staff will feed them small invertebrates (e.g., ostracods).

Propagation: Propagation methods for this species are to be determined and will be conducted as part of normal refugia operations.

Texas troglobitic water slater:

Collection: Texas troglobitic water slaters are primarily found in Artesian Well on Texas State Campus. Recent research by Will Coleman (Texas State University) suggests that this is a deep aquifer species, rarely found at the surface. Mr. Coleman was unable to keep any alive, as all specimens he collected were injured. USFWS will continue to work with invertebrate experts to determine what might be the optimum way to collect this species. USFWS staff will deploy and check drift nets in the Artesian Well as Texas State University allows.

Maintenance: Staff will transfer captured specimens to the SMARC and house them in custom aquatic holding systems. Staff will feed Texas troglobitic water slaters detrital matter, matured biofilms colonized on cotton lures, and flake fish food to supplement their diet.

Propagation: Staff need to determine propagation methods for this species, to be conducted as part of normal refugia operations.

Table 5. A tentative schedule for all species sampling during 2026. Collections listed here are subject to change with extenuating circumstances such as weather and coordination with external partners. USFWS will notify EAA and partners of sampling dates as they become known or changed.

Edward's Aquifer Species Collection Plan 2026			
Date (month)	Interval	Location	Target Species
January	14 Consecutive days with traps checked 2-3 times a week	Rattlesnake Cave & Rattlesnake Well	Texas blind salamander
January	1-day sampling event, hand pick from downed wood	Landa Lake	Comal Springs dryopid beetle
January	1–3-day sampling event	Spring Island and Comal Springs	Comal Springs salamander
January	1-day sampling event	Spring Island	Peck's cave amphipods and Comal Springs dryopid beetle
January	3 days	Spring Lake, Eastern Spillway and Rio Vista dam	San Marcos fountain darters
January	3 days	Land Lake, Spring Island and Old Channel	Comal Springs fountain darters
February	14 Consecutive days with traps checked 2-3 times a week	Primer's Fissure & Johnson's Well	Texas blind salamander
February	Set lures	Spring Run, Landa Lake	Comal Springs dryopid beetle, Comal Springs riffle beetle, Peck's cave amphipod
February	1-day sampling event	San Marcos River	Texas wild rice
February	1–3-day sampling event	Spring Island and Comal Springs	Comal Springs salamander
February	1-day sampling event	Spring Island	Peck's cave amphipod Comal Springs dryopid beetle
March	Collect Lures and reset	Spring Runs, Spring Island, Western Shore	Comal Springs riffle beetle, Comal Springs dryopid beetle, Peck's cave amphipod

Edward's Aquifer Species Collection Plan 2026			
Date (month)	Interval	Location	Target Species
March	1-day sampling event, hand pick	Landa Lake	Peck's Cave amphipod Comal Springs dryopid beetle
March	1–3-day sampling event	Spring Island	Comal Springs salamander
March	1-day sampling event, hand pick from downed wood	Landa Lake	Comal Springs dryopid beetle
April	Check 2 consecutive weeks	Rattlesnake Cave & Rattlesnake Well	Texas blind salamander
April	Collect Lures and check logs	Spring Runs, Spring Island, Western Shore	Comal Springs riffle beetle, Comal Springs dryopid beetle, Peck's cave amphipod
April	1–2-day sampling event	Spring Lake and Eastern Spillway	San Marcos salamander
April	1-day sampling event	San Marcos River	Texas wild rice
April	Throughout, coincide with bio-monitoring	San Marcos River	Fountain darters
April	Throughout, coincide with bio-monitoring	Spring Island and Landa Lake	Fountain darters
April	Drift net checked every 24-48 hours over two weeks.	Artesian Well	Texas troglobitic water slater, Edwards Aquifer diving beetle, Texas blind salamanders
May	14 Consecutive days with traps check 2-3 times a week	Primer's Fissure & Johnson's Well	Texas blind salamander
May	1-day sampling event	San Marcos River	Texas wild rice

Edward's Aquifer Species Collection Plan 2026			
Date (month)	Interval	Location	Target Species
May	1–3-day sampling event	Comal Springs	Comal Springs dryopid beetle and Comal Springs salamander
May	Drift net, donated from bio-monitoring	Comal Springs	Peck's cave amphipod
May	Set lures	Spring Runs, Spring Island, Western Shore	Comal Springs riffle beetle, Comal Springs dryopid beetle, Peck's cave amphipod
June	1-day sampling event, hand pick	Landa Lake	Peck's Cave amphipod Comal Springs dryopid beetle
June	1–3-day day sampling event	Spring Island	Comal Springs salamander
June	Retrieve lures	Spring Runs, Spring Island, Western Shore	Comal Springs riffle beetle, Comal Springs dryopid beetle, Peck's cave amphipod
July	14 Consecutive days with traps check 2-3 times a week	Rattlesnake Cave & Rattlesnake Well	Texas blind salamander
September	Check nets M and Th every week	Diversion Springs	Texas Blind salamander, San Marcos salamander
September	2-day sampling event	Hotel Springs and Eastern Spillway	San Marcos salamander
September	1-day sampling event, hand pick	Landa Lake	Peck's Cave amphipod Comal Springs dryopid beetle
September	1–3-day sampling event	Comal Springs	Comal Springs salamander
September	Set lures	Spring Runs, Spring Island, Western Shore	Comal Springs riffle beetle, Comal Springs dryopid beetle, Peck's cave amphipod

Edward's Aquifer Species Collection Plan 2026			
Date (month)	Interval	Location	Target Species
October	14 Consecutive days with traps checked 2-3 times a week	Rattlesnake Cave & Rattlesnake Well	Texas blind salamander
October	Throughout, coincide with bio-monitoring	San Marcos River	Fountain darters
October	Throughout, coincide with bio-monitoring	Spring Island and Landa Lake	Fountain darters
October	Drift net, donated from bio-monitoring	Comal Springs	Peck's cave amphipod
October	Check nets M and Th every week	Diversion Springs	Texas Blind salamander, San Marcos salamander
October	1-day sampling event	San Marcos River	Texas wild rice
October	Retrieve Lures	Spring Runs, Spring Island, Western Shore	Comal Springs riffle beetle, Comal Springs dryopid beetle, Peck's cave amphipod
October	1-day sampling event, hand pick from downed wood	Spring Runs, Landa Lake	Comal Springs dryopid beetle
October	1–3-day sampling event	Spring Island	Comal Springs salamander
November	14 Consecutive days with traps checked 2-3 times a week	Primer's Fissure & Johnson's Well	Texas blind salamander
November	1-day sampling event, hand pick	Landa Lake	Peck's cave amphipod Comal Springs dryopid beetle
November	Check nets M and Th every week	Diversion Springs	Texas Blind salamander, San Marcos salamander

Edward's Aquifer Species Collection Plan 2026			
Date (month)	Interval	Location	Target Species
November	1–3-day sampling event	Comal Springs	Comal Springs salamander
November	Drift net, donated from bio-monitoring	Comal Springs	Peck's cave amphipod
November	Set lures	Spring Runs, Landa Lake	Comal Springs riffle beetle, Comal Springs dryopid beetle, Peck's cave amphipod
December	Check nets Mand Th every week	Diversion Springs	Texas Blind salamander, San Marcos salamander
December	1-day sampling event	San Marcos River	Texas wild rice
December	Collect lures	Spring Runs, Landa Lake	Comal Springs riffle beetle, Comal Springs dryopid beetle, Peck's cave amphipod

Refugia Stocks:

Collection: Standing Stock numbers contribute to Refugia Stock numbers. Collections will continue until Standing stock targets are attained. If Refugia Stock triggers, outlined in the contract, are reached and Standing Stock are not at full capacity, USFWS will conduct special targeted collections to increase Standing Stock.

Maintenance: USFWS will conduct maintenance in a similar manner described for standing stocks.

Propagation: Propagation for stocking is not anticipated during 2026.

Salvage Stocks:

Collection: If specific salvage triggers defined in the EAHCP are reached, the Refugia Program, in consultation with the EAA, will accommodate salvaged organisms no more than twice during the 12-year contract period. If triggers for multiple species are simultaneously reached, species collections during salvage operations will be prioritized based upon the perceived impacts of reduced river and spring flow and habitat degradation on Covered

Species (i.e. EAHCP triggers). Those species that are river obligate species (i.e., fountain darters and Texas wild rice) or that occupy spring orifice and interstitial ground water habitats (i.e., San Marcos and Comal Springs salamanders, Peck's cave amphipods, Comal Springs dryopid beetles) are presumed to be affected first as flows decrease. Those that reside solely within the aquifer (i.e., Edwards Aquifer diving beetles, Texas troglobitic water slaters and Texas blind salamanders) are presumed to be affected subsequently. In May 2025, 1,600 Fountain Darters in the Comal River were salvaged during an extreme low flow event. The Fountain Darters were reintroduced in the fall of 2025 once spring flows increased and air temperatures decreased. After discussion with the EAA and USFWS Ecological Services, if spring flows were to return to dangerously low levels (~40 cfs) in the future, Comal Springs Fountain Darters will first be moved to more connected areas of the Comal River where there is better habitat available. If the spring flows continue to decline and the Comal River habitat declines further, Fountain Darters will then be salvaged if there is no other suitable habitat to relocate them to further downstream.

Maintenance: The Refugia Program will maintain organisms collected during salvage operations at the SMARC and UNFH for up to one-year or until their disposition is determined. The Refugia Program may suspend or terminate research if space is required for salvaged organisms. Research may also be suspended if personnel are directed to collect and maintain salvage stocks.

Propagation: Likewise, production of species would be limited to no more than twice during the 12-year contract period if species extirpation occurs. USFWS propagated species at the SMARC or UNFH would be held for up to one year or less if stocking is required. We may suspend or terminate research activities if space is required to house cultured species. Research may also be suspended if personnel are needed to reproduce, maintain, or stock progeny.

Construction/Renovation/Infrastructure/Facility:

The USFWS will report any non-routine maintenance for the program buildings to the EAA as they occur.

The USFWS will institute all reasonable and practical security measures to safeguard EAA refugia facilities, equipment, and species.

Staffing/Labor/Personnel:

The two Program Leads (Research and Husbandry/Collections) will mentor and train lower-graded employees, oversee facility maintenance and repair, develop, and implement budgets, and organize activities that relate to all contract activities. The program leads will manage, and coordinate research, propagation, culture, and field activities related to the refugia. The leads are expected to provide proper and efficient use of facilities and staff resources. These leads will work with the Center Director and the Deputy Director to ensure that contractual obligations are

met in a timely manner. In coordination with the Deputy Center Director, the EARP team will prepare all the written materials required for the reimbursable agreement reporting. Likewise, the EARP team will prepare oral presentations to be used as briefing statements, outreach presentations, internal reports, work summaries, and technical presentations at professional meetings. The two leads will continue to work and communicate regularly with partners, USFWS personnel and other researchers to meet USFWS and contract goals.

Under the direction of the Program Leads, biologists and biological science technicians, split between SMARC and UNFH, will assist with the collection, daily upkeep, maintenance, propagation, and research efforts for the ten species at the SMARC and UNFH. This includes maintaining culture and experimental production systems, keeping records along with entering, filing, and collating data. The biologists and technicians will also generate basic summary statistics and graphic analyses of data and document program accomplishments through the composition of Standard Operating Procedures (SOPs), reports, and manuscripts.

Permitting:

Both the SMARC and UNFH operate under the USFWS Southwest Region's Federal Fish and Wildlife Permit for Native, Endangered, and Threatened Species Recovery (number TE676811-0) and the Texas Parks and Wildlife Scientific Research Permits (SPR-0822-106).

Biosecurity:

Both the UNFH and SMARC will practice biosecurity procedures in Refugia and Quarantine areas and conduct appropriate biosecurity procedures on field equipment.

Husbandry Pilot Studies:

The EARP will continue refining PCA neonate exclusion and manual removal efforts started as a 2025 research project. The manual removal of neonates resulted in neonates that survived the procedure and are actively growing in the Refugia. Passive exclusion takes more time due to the 6+ weeks required for neonates to develop and exit the female's brood pouch. Only a single mortality of a gravid female was observed while they were in the passive exclusion housing. The brooding females' eggs showed evidence of development while held in the passive exclusion housings. Additional time is required to fully assess the success of allowing neonates to separate themselves from brooding females in the passive exclusion housings and additional manual removals of neonates is required to determine overall survival of the brooding female and the neonates post removal.

Task 2. Research

The Research Plan for 2026 will continue to focus on genetic assessments of covered species but will also investigate reproductive activity of wild Fountain Darters and thermal tolerances of multiple HCP species. Genetics assessments for the Texas blind salamander, San Marcos salamander and Fountain darter (Comal and San Marcos) will be concluded in 2026. Wild Fountain Darters in the lower reaches of the San Marcos River were observed reproducing at higher temperatures than were observed stopping reproduction in the lab. Research in 2026 will reassess basic life history of Fountain Darters in warmer stretches of the San Marcos River. Additionally, the thermal tolerance equipment developed in 2025 will be used to test thermal minimum and maximum tolerances as well as thermal preferences of covered species. Determining thermal tolerances further inform collection strategies, identify stressors, and optimize refugia conditions.

The total cost for proposed 2026 research will not exceed the contractually agreed amount of \$503,075. \$405,705 of the Task 2 budget is dedicated to funding research. \$97,370 is for operating costs (FWS 24% overhead). The following section describes the basic components of each of these proposed 2026 activities

Table 6. Updated table showing the level of knowledge for each covered species. Knowledge score is a gradient from 0 to 5, where 0 is complete lack of knowledge and 5 indicates the existence of documented procedures for that species. Species with knowledge scores of 5 in each category indicate the species is in complete refugia.

Species	Collection	Husbandry	Propagation	Genetics	Reintroduction
Fountain darter	5	4	3	3	3
Texas wild rice	5	5	5	5	5
Texas blind salamander	4	5	4	3	1
Peck's cave amphipod	5	4	3	4	3
San Marcos salamander	5	5	4	3	3
Comal Springs salamander	5	5	3	3	1
Comal Springs riffle beetle	5	5	4	4	4
Comal Springs dryopid beetle	5	4	2	4	1
Texas troglobitic water slater	1	1	0	1	1
Edwards Aquifer diving beetle	1	0	0	0	1

Project 1:

Title: Testing thermal tolerances and preferences of current and future covered HCP species.

Species: *multiple*

Principal: USFWS

Overview: A few studies have investigated temperature tolerance in EAHCP covered species. Unfortunately, these studies do not use standard practices, are not very precise and have only investigated high temperatures. A variable temperature gradient prototype

was developed by the Huffman laboratory that allows for the stable establishment of a very precise and customizable temperature gradient to investigate thermal tolerances. The prototype was optimized in 2025. In 2025, the thermal minimum and maximum temperatures will be assessed for covered species using captive propagated individuals. The optimal preferred temperature will also be determined.

Budget: SCA Intern (\$75,705) + USFWS support (\$20,000) = \$95,705

Benefit to the Refugia: Establishing thermal tolerances improves refugia housing conditions by determining the extent of acceptable fluctuation in water temperatures maintained by heater/chiller units, especially during extreme outdoor temperature conditions. Additionally, investigating the extent of each species thermal tolerances can provide information about how species may tolerate low flows and extreme temperature conditions in the wild.

Expected Results: A report will be presented to the EAA, and a peer-reviewed publication will be generated, if appropriate.

Project 2:

Title: Genetic Assessment of Texas Blind Salamanders and San Marcos Salamanders

Species: *Eurycea rathbuni* and *Eurycea nana*

Principal: Dr. Chris Nice and Dr. Kate Bell (Texas State University)

Overview: A fully functioning captive assurance population is representative of the wild population and reflects the genetic diversity and unique genotypes found in the wild. Additionally, captive propagation efforts should take into account the genetics of captive held individuals to maintain genetic diversity in the refugia to ensure captive propagation efforts do not result in a reduction in diversity of Fx progeny. Tail clips were collected from wild Texas blind salamanders in 2024 while encountered during collection events. These tail clips will be used to assess wild genetic diversity. Tail clips will be collected from standing stock and captive propagated salamanders in the refugia. All refugia salamanders will be uniquely tagged with p-chips so that individual genetic IDs will be available. High-throughput sequencing will be used to assess genetic variation of wild caught and Fx captive breed Texas blind salamanders.

Budget: TXST (\$120,000) + USFWS support (\$20,000) = \$140,000

Benefit to the Refugia: A genetic assessment of Texas blind salamanders will determine if the standing stock in the Refugia are reflective of the wild population, provide individual genetic IDs to current Refugia standing stock, and inform captive breeding strategies if reintroduction of Fx were needed.

Expected Results: A report will be presented to the EAA, and a peer-reviewed publication will be generated, if appropriate.

Project 3:

Title: Fountain Darter Genetic Assessment

Species: *Etheostoma fonticola*

Principal: Dr. Chris Nice and Dr. Kate Bell (Texas State University)

Overview: A fully functioning captive assurance population is representative of the wild population and reflects the genetic diversity and unique genotypes found in the wild. Additionally, captive propagation efforts should account for the genetics of captive held

individuals to maintain genetic diversity in the refugia to ensure captive propagation efforts do not result in a reduction in diversity of Fx progeny. High-throughput sequencing will be used to assess genetic variation of wild caught fountain darters. Fountain darter mortalities from the 2024 seasonal collections will be used to inform this study. Additional fish may be collected, and non-fatal fin clip samples retained if specific sampling sites are underrepresented.

Budget: TXST (\$60,000) + USFWS support (\$20,000) = \$80,000

Benefit to the Refugia: A genetic assessment of fountain darters will determine if the standing stock in the Refugia are reflective of the wild population, provide individual genetic IDs to current Refugia standing stock, and inform captive breeding strategies if reintroduction of Fx were needed.

Expected Results: A report will be presented to the EAA, and a peer-reviewed publication will be generated, if appropriate.

Project 4:

Title: Assessment of reproduction and other life history aspects of the Fountain Darter in a eurythermal reach of the San Marcos river

Species: *Etheostoma fonticola*

Principal: Dr. Tim Bonner (Texas State University)

Overview: Purpose of this study is to quantify basic life history (e.g., reproduction, diets, age groups, growth) of the endangered Fountain Darter in a eurythermal reach of the San Marcos River. Fountain Darters are reported to be restricted to the upper reaches of the San Marcos and Comal rivers because of their dependence on narrow temperature ranges (stenothermal) associated with spring flow. Interestingly, Fountain Darters have been found further downstream in the San Marcos River and breeding in water temperatures that exceed previously determine reproductive limits. Consequently, quantifying life history of Fountain Darters that persist in higher water temperatures and comparing their life history to previously reported life history of Fountain Darters from stenothermal reaches would offer a unique opportunity to assess the influence of fluctuating water temperatures, and by extension, low spring flows, on Fountain Darter reproduction, growth, and survival under natural conditions. Study objectives will include 1) quantifying monthly estimates of gonadosomatic index (GSI), ovarian stage, and oocyte diameters, 2) assessing monthly stomach contents, and 3) estimating growth, age groups, and age-group survival using length frequency histograms. Additional objectives may include, time permitting, age estimates using otoliths and quantifying parasite load. Three to five females of reproductive length (>24 mm in total length) will be collected monthly from a single site on the San Marcos River near Martindale with seines. Collections to assess body condition will not exceed 60 fish from the San Marcos River. Fish will be anesthetized in MS-222 and fixed in 10% formalin. After two weeks, fish will be rinsed in tap water and preserved in 70% ethanol until dissected. On a separate collection date, up to 50 additional Fountain Darters will be captured with seines, measured to the nearest mm in total length, and released. The length data will be used to develop robust length frequency histograms informing age classes and cohorts. Water temperature sensors will be deployed in slackwater habitats, where female Fountain Darters will be collected, at the start and for the duration of the project for the purpose of obtaining high resolution water temperature data to overlay with ovarian development

and egg release.

Budget: TXST (\$50,000) + USFWS support (\$20,000) = \$70,000

Benefit to the Refugia: This research will reassess what was understood of the basic life history of Fountain Darters and inform captive breeding strategies, wild collections and reintroductions/fish movement. This study will also inform if Fountain Darters can persist in higher water temperatures and lower flows than previously identified, informing salvage actions during low flow events.

Expected Results: A report will be presented to the EAA, and a peer-reviewed publication will be generated, if appropriate.

Project 5:

Title: Continuation: Assessing the effectiveness of using pictures for mark and recapture of San Marcos salamanders.

Species: *Eurycea nana*

Principal: USFWS

Overview: in 2023-2024, the EARP conducted a yearlong mark and recapture effort using pChip transponders in the San Marcos salamander. The study was very successful and produced information on recapture rates, movement, population demographics, and estimates of population size. 453 salamanders were tagged with pChips and over 3000 salamanders were collected during the study. Photos were taken of all salamanders collected during the study and 2025 work validated the efficacy of using photos as a “tagging” method to assess populations through capture-mark-recapture studies. Photo recognition software (Wild.ID) successfully identified p-chip tagged recaptured salamanders and identified additional recaptured salamanders that were not tagged; bolstering the available data to make population size estimates and assess movement between sampling locations. 2026 work will finish processing the remaining photos, run all photos through Wild.ID and finalize movement assessments and population estimates.

Budget: \$20,000

Benefit to the Refugia: Population estimates can inform how many individuals are required to maintain in the Refugia to ensure the refugia population is representative of the wild population. Lack of movement between sites informs collection efforts, breeding strategies in the refugia and reintroduction plans.

Expected Results: A report will be presented to the EAA, and a peer-reviewed publication will be generated, if appropriate.

Task 3. Species Propagation and Husbandry

Development and refinement of SOPs for animal rearing and captive propagation: SMARC and UNFH will continue to refine SOPs for all species as needed for updates to reflect new protocols that are instituted for each species throughout the year. As new information becomes available about genetic management and improvements to captive holding and propagation practices, SMARC and UNFH will further develop draft Captive Propagation Plans for all species.

Task 4. Species Reintroduction

Reintroduction Plan for term of contract:

SMARC and UNFH continue to refine the Reintroduction Strategy as new information becomes available.

Reintroduction Plan for 2026: None

Any anticipated triggers being prepared for: Given current weather predictions, spring flows, and the Edwards Aquifer water level, no anticipated triggers are anticipated during the 2026 performance period.

Task 5. Reporting

5.1 Species specific Propagation plans (SOPs): Refine throughout year as needed

5.2 Species specific Genetic Management plans: Texas wild rice, Texas blind salamander, San Marcos salamander, Peck's cave amphipod; contingent on when genetic study results are finished.

5.3 Species specific reintroduction plans: Refine as needed

5.4 2026 EAHCP Annual Program reporting– A year-end report of 2026 activities will be provided to the EAA no later than 1/31/2027.

5.5 Program reporting as required by ITP and TPWD. TPWD Scientific Research Permit Report will be filed July 31, 2026.

5.6 Descriptions and photographs of procedures from collections to restocking – Photographs and documentation of collection and restocking will be included in the monthly report to the EAA CSO along with the year-end report.

5.7 Summaries of any data analyses, research, or genetic analyses – Research projects and results of collection efforts will be provided to the EAA in the monthly reports, year-end documentation, and stand-alone documents (agreed upon by Center Director and HCP CSO).

5.8 Description of terms and conditions of any permits received – As permits are received, their contents will be conveyed to the EAA.

5.9 Monthly electronic reports to HCP CSO: A monthly report of all activities will be provided to the HCP CSO. We anticipate providing the report by the 10th of each month for the previous month's activities.

Task 6. Meetings and Presentations

Planning or coordination meetings:

- Yearly planning meeting with SMARC and UNFH staff
- Public meetings
 - EAA Board
 - End of year report
 - Present research results
 - Implementing Committee
 - End of year summary

- Stakeholder Committee
 - End of year summary
- Science Committee
 - Methods for research projects
 - Present research results
- Professional Scientific Meetings

Monitoring:

Monitoring will be conducted through progress reports and site visits to the refugia as well as through collaborative management by the EAHCP CSO.

Budget: The 2026 EARP budget remains within the Exhibit D budget with modifications to Task 1, Task 5 and Task 6. No funds were removed from or added to Task 2 as all Exhibit D funds are allocated to 2026 research projects. \$75,132 from Task 5 and \$11,057 from Task 6 were moved to Task 1 for a total increase of \$86,189 to Task 1. The Exhibit D funding in Tasks 5 and 6 have historically been larger than required for EARP staff to meet program needs while Task 1 has required more funding to cover husbandry and collection activities on a yearly basis. Much of the extra funding required in Task 1 is to bring on interns/staff to carry out husbandry and collection duties after the EARP lost multiple staff members in 2025. The 2026 purchasing budget in Task 1 (i.e. food and life support systems) is reduced from previous years because the EARP has the required parts and equipment to finalize updated life support systems in Quarantine and Refugia spaces. The purchase budget will mostly be used to cover food, field gear, general husbandry equipment and system replacement parts.

US. Fish and Wildlife Service 2026		
Task	Description	2026 Work Plan Amounts
1	Refugia Operations	
	SMARC Refugia & Quarantine Bldgs	
	Equipment & Building Maintenance	\$6,000.00
	Utilities	\$10,500.00
	UNFH Refugia & Quarantine Bldgs	
	Equipment & Building Maintenance	\$10,000.00
	Utilities	\$30,000.00
	SMARC Species Husbandry and Collection	\$93,000.00
	UNFH Species Husbandry and Collection	\$260,000.00
	Student Conservation Association	\$137,000.00

US. Fish and Wildlife Service 2026		
Task	Description	2026 Work Plan Amounts
	Fish Health	\$8,000.00
	SMARC Reimbursables	\$50,276.00
	UNFH Reimbursables	\$50,000.00
	Subtotal	\$654,776.00
	Admin Cost Subtotal (24% Overhead)	\$157,147.00
	Task 1 Total	\$811,923.00
2	Research - Partnered Research	
	Texas State University: Salamander Genetics	\$120,000.00
	Texas State University: Fountain Darter Genetics	\$60,000.00
	Texas State University: Fountain Darter GSI	\$50,000.00
	FWS Research and Support	
	FWS Salary	\$100,000.00
	SCA Thermal Tolerance	\$75,705.00
	Subtotal	\$405,705.00
	Admin costs for Task 2 (24% Overhead)	\$97,370.00
	Task 2 Total	\$503,075.00
5	Reporting	
	SMARC Staff	\$6,000.00
	UNFH Staff	\$6,000.00
	Subtotal	\$12,000.00
	Admin costs for Task 5 (24% Overhead)	\$2,880.00
	Task 5 Total	\$14,880.00
6	Meetings and Presentations	
	SMARC Staff	\$7,000.00
	UNFH Staff	\$5,000.00
	Subtotal	\$12,000.00
	Admin costs for Task 6 (24% Overhead)	\$2,880.00

US. Fish and Wildlife Service 2026		
Task	Description	2026 Work Plan Amounts
	Task 6 Total	\$14,880.00
	Totals	\$1,344,758.00

Projected (2026) Budget Summarized by Task:

Task 1: \$811,923
 Task 2: \$503,075
 Task 3: \$0
 Task 4: \$0
 Task 5: \$14,880
 Task 6: \$14,880

Projected (2026) Subcontractor Expenses Summarized by Task

Task 1: Student Conservation Association: \$137,000
 Task 2: Texas State Salamander Genetics: \$120,000
 Task 2: Texas State Fountain Darter Genetics: \$60,000
 Task 2: Texas State Fountain Darter Gonadosomatic Index (GSI): \$50,000
 Task 2: Student Conservation Association Thermal Tolerance: \$75,705
 Task 3: \$0
 Task 4: \$0
 Task 5: \$0
 Task 6: \$0

Timeline of 2026 Milestones

January	Subcontracted research awards executed 2026 Specific Research Study Plans finalized
July	Submit and renew TPWD permit
September	Draft Research Reports
December	Draft Annual report

Literature Cited

AFS-FHS (American Fisheries Society-Fish Health Section). 2005. Model Quality Assurance/Quality Control Program For Fish Health Laboratories, 2016 edition. Accessible at: <http://afs-fhs.org/bluebook/bluebook-index.php>.

Hall, R (Edwards Aquifer Authority). 2016. 2016 Comal Springs Riffle Beetle SOP Work Group: Attachment 2: Existing CSRB Cotton Lure SOP. Available at: http://www.eahcp.org/index.php/administration/work_groups/2016_comal_springs_riffle_beetle_sop_work_group

Corbin, A. B. 2020. Population genomics and conservation of texas cave and spring salamanders (Plethodontidae: Eurycea). University of Texas, Arlington, Texas.

Lucas, L. K., Fries, Joe N., Gabor, Caitlin R., Nice, Chris C. 2009. Genetic variation and structure in *Eurycea nana*, a federally threatened salamander endemic to the San Marcos springs. *Journal of Herpetology* 43(2):220-227.

Wilson, W. D., J. T. Hutchinson, K. G. Ostrand. 2016. Genetic diversity assessment of in situ and ex situ Texas wild rice (*Zizania texana*) populations, an endangered plant. *Aquatic Botany* 136:212-219.

USFWS and AFS-FHS (U.S. Fish and Wildlife Service and American Fisheries Society-Fish Health Section). 2016. Standard procedures for aquatic animal health inspections. In AFS-FHS. FHS blue book: suggested procedures for the detection and identification of certain finfish and shellfish pathogens, 2016 edition. Accessible at: <http://afs-fhs.org/bluebook/bluebook-index.php>.

5.1.2 Voluntary Irrigation Suspension Program Option

Long-term Objective:

The goal of VISPO is to enroll 41,795 acre-feet (AF) of permitted irrigation rights (base and/or unrestricted) that will remain unused in years of severe drought based on the USFWS approved 2019 amendment. Permit holders are enrolled in five-year and ten-year VISPO agreements and will be compensated based on the amount of water enrolled and the program selected. Permit holders enrolled in 10-year agreements are paid a standby fee of \$70.20/ac-ft per year every year of the term regardless of aquifer conditions and an additional fee of \$210.60/ac-ft per year will be paid for each year when temporary pumping suspensions are required. Permit holders enrolled in 5-year agreements are paid a standby fee of \$54/ac-ft per year every year of the term regardless of aquifer conditions and an additional fee of \$160/ac-ft per year will be paid for each year when temporary pumping suspensions are required. On December 31, 2026, over 3,960.939 acre-feet in VISPO agreements will expire and those permit holders are currently being offered the opportunity to renew their VISPO forbearance agreements prior to their expiration.

If the water level at the J-17 index well in San Antonio is at or below 635 feet on October 1 of any year, program participants are contractually obligated to suspend the use of their enrolled water for the following year - beginning on January 1. On October 1, 2025, the J-17 index well was reported to be at 628 feet msl, therefore triggering suspension of use of enrolled water in VISPO by participating permit holders in year 2026. Annual VISPO payouts through 2025 are reflected in Table 5.1.2-1.

Table 5.1.2-1: VISPO Total Payout by Year

Year	Payment Type	Total Enrolled (AF)	Total
2014	Stand-by	22,388	\$1,201,938
2015	Stand-by + Suspension	40,921	\$8,677,262 ^a
2016	Stand-by	40,921	\$2,208,723
2017	Stand-by	40,921	\$2,228,299
2018	Stand-by	40,921	\$2,320,309
2019	Stand-by	39,646	\$2,341,927
2020	Stand-by	39,803	\$2,508,070
2021	Stand-by	41,795	\$2,509,975
2022	Stand-by	41,795	\$2,331,858
2023	Stand-by + Suspension	41,795	\$9,987,533 ^b
2024	Stand-by + Suspension	41,795	\$8,936,926 ^c
2025	Stand-by + Suspension	41,795	\$8,654,550 ^d
		Grand Total	\$53,907,370

a. 2015 payment breakdown: Standby \$2,169,315; Suspension \$6,507,947

- b. 2023 payment breakdown: Standby \$2,509,975; Suspension \$7,477,576
- c. 2024 payment breakdown: Standby \$2,252,077; Suspension \$6,684,849
- d. 2025 payment breakdown: Standby \$2,183,760; Suspension \$8,654,550

Target for 2026:

The total volume goal of 41,795 ac-ft in VISPO agreements will continue to be maintained and managed by EAA staff. Throughout 2026, staff will continue to work on renewing 29 VISPO agreements totaling 3,960.939 acre-feet that will expire on December 31, 2026. VISPO suspension payments will be made to program enrollees by March 1, 2026.

Budget:

Table 7.1:

\$4,172,000

Estimated 2026 budget if Standby:

Standby: \$2,183,760

Estimated 2026 budget if Suspension:

Suspension: \$8,654,550

5.1.3 Regional Water Conservation Program

Long-term Objective:

Conservation measures will be implemented to conserve 20,000 acre-feet of water to reduce withdrawals from the Edwards Aquifer by 10,000 acre-feet. The concept is to reduce aquifer withdrawals by 10,000 acre-feet using a Regional Water Conservation Program (RWCP).

Several entities within the Edwards Aquifer Authority (EAA) jurisdictional area agreed to make Initial Commitments to the EAA Groundwater Trust to provide an immediate benefit to the aquifer and springflow. The EAA maintains contracts with three communities to conserve water under the RWCP through 2028. The City of Uvalde began implementing its toilet replacement program in 2013 to conserve 57.450 ac-ft of water. In 2014, the City of Universal City began implementing its leak detection program to conserve 163.684 ac-ft of water and in 2016, SAWS began implementing a five-year Leak Detection and Repair Program. The SAWS Leak Detection and Repair Program satisfies the total remaining RWCP goal for water committed into the EAA Groundwater Trust for the remainder of Incidental Take Permit (TE-63663A-1).

The estimated total savings of 20,053 ac-ft of conserved water was achieved from all three communities in 2020. One-half of the conserved water (10,027.13 ac-ft) has been placed in the EAHCP Groundwater Trust through the RWCP to remain unpumped through 2028.

Target for 2026:

None. This conservation measure was achieved in 2020 and 10,027.13 ac-ft has been placed in the EAHCP Groundwater Trust.

Budget:

Table 7.1:

\$493,250

Estimated 2026 budget:

\$0

5.1.4 Edwards Aquifer Authority Stage V Critical Period Management

Stage V Critical Period Management was developed to help decrease withdrawals and maintain adequate springflows at both Comal and San Marcos Springs during times of drought. On February 14, 2012, the Edwards Aquifer Authority (EAA) Board of Directors voted to amend its Critical Period Management (CPM) Program to include the new emergency Stage V. Implementation of Stage V results in a reduction of 44% to municipal, industrial and irrigation permit holders in both pools of the Edwards Aquifer who are authorized to withdraw more than 3 ac-ft per year. Stage V became effective as a rule on March 18, 2013 when the Incidental Take Permit was issued by the U.S. Fish and Wildlife Service.

2026 Implementation:

EAA staff monitors daily aquifer levels in both the San Antonio and Uvalde Pools of the Edwards Aquifer Region, and if at any time, the 10-day average for aquifer or springflow levels in either pool reaches the designated trigger for Stage V, the EAA General Manager will issue a Notice of Commencement for implementation in five newspapers within the EAA jurisdiction. Notice will also be posted at the EAA's office and on the EAA website. All affected permit holders will also be provided written notice of implementation of Stage V and the requirement to reduce pumping by 44%.

Permit Holder Assistance:

The EAA provides an online Critical Period Calculator to assist permit holders in calculating CPM reductions as they apply to each individual permit holder's total authorized withdrawal amount throughout the year. EAA staff also assists permit holders through "one-on-one" customer service offerings as may be necessary.

Triggers:

The triggers for Stage V in the San Antonio Pool are as follows: the 10-day average at the J-17 index well in San Antonio falls below 625 mean sea level (msl); or the 10-day average at Comal Springs falls below 45 cubic feet per second (cfs); or the 3-day average at Comal Springs falls below 40 cfs. In the Uvalde Pool, Stage V is triggered when the 10-day average at the J-27 index well falls below 840 msl.

Reporting:

By rule, permit holders are required to report their annual groundwater use to the EAA by January 31 for all groundwater used the preceding year. Permit holders who use more Edwards groundwater than authorized annually are subject to enforcement action.

5.5.1 Edwards Aquifer Authority and San Antonio Water System Aquifer Storage and Recovery Work Plan

Section 5.5.1 of the Edwards Aquifer Habitat Conservation Plan (EAHCP) assigns acquiring leases of water permits for use in the San Antonio Water System (SAWS) Aquifer Storage and Recovery (ASR) to the Edwards Aquifer Authority (EAA). SAWS will operate the ASR infrastructure and retain control of day-to-day operations of the ASR facility related to EAHCP water injection and recovery. The EAA will ensure compliance with EAHCP requirements through management of the Interlocal Contract between the EAA and SAWS for the Use of the Twin Oaks Aquifer Storage and Recovery Project for Contribution to Springflow Protection, which became effective August 14, 2013. The contract outlines the responsibilities of both parties, including administration and implementation.

Long-term Objective:

The objective of SAWS Twin Oaks ASR (ASR now runs out of H₂O Oaks facility) system is to deliver 126,000 acre-feet of Edwards Aquifer groundwater. This water is best managed to offset pumping from Edwards Aquifer wells during a repeat of a drought similar to the drought of record and acquire an additional 50,000 acre-feet of agricultural, municipal, industrial groundwater withdrawal rights that will be unpumped during a repeat of the drought of record.

Target for 2026:

The ASR contract between EAA and SAWS will continue to be implemented. EAA is the agent for ASR enrollments and in year 2020 issued its final notice of availability of EAHCP groundwater to SAWS for injection resulting in the completion of the storage goal of 126,000 acre-feet. Effective in 2021, a total of 50,000 acre-feet of groundwater rights was secured by EAA staff to be used as forbearance water and will go unpumped during a repeat of a drought of record. Future water acquired by the EAA through contractual agreements will be necessary to maintain the 50,000 ac-ft balance due to expiring leases occurring annually. The 50,000 ac-ft balance will be utilized for forbearance purposes during a repeat of a drought of record as outlined in the EAHCP. During a drought of record, the stored ASR water may be used by SAWS to offset forbearance and the EAA will also forbear the use of the 50,000 acre-feet of groundwater under its control.

ASR Program:

Description of the SAWS ASR: The SAWS H₂O Oaks ASR is an underground storage reserve in the Carrizo Aquifer in southern Bexar County. As a SAWS water management project, it is designed to store Edwards Aquifer water when demand is less than available supply. The stored water is returned to San Antonio for use when demand is high and Edwards supply is restricted by Critical Period Management and other drought-related limitations.

The capacity and capabilities of the SAWS ASR are such that it can be used to meet SAWS ratepayer expectations and, if operated as described in the EAHCP, will play a significant role protecting the Covered Species at Comal and San Marcos springs.

Operations: The EAHCP Program Interlocal Contract between the EAA and SAWS for the Use of the Twin Oaks Aquifer Storage and Recovery Project for contribution to Springflow

Protection, effective August 14, 2013, takes elements of the EAHCP's ASR flow protection strategy and places them into an operations contract.

Injection: Storage of EAHCP groundwater shall be at the discretion of SAWS and will be dependent on operating conditions. All EAHCP groundwater made available to SAWS before June 30th, 2020, was physically stored or credited as if stored, and will be used to meet any forbearance from the Aquifer should triggers defined in the Interlocal Contract occur in 2026.

Forbearance and Recovery: Forbearance of Edwards Aquifer pumping from certain wells will occur when the ten-year rolling recharge average is less than 500,000 acre-feet and the ten-day average of aquifer levels measured at the J-17 index well drop below 630 feet mean sea level (MSL). The annual amount of water to be recovered from the ASR during a repeat of the drought of record is outlined in Exhibits E & F of the Interlocal Contract. Changes to the Presumptive Forbearance Schedule outlined in Exhibit E may be approved as outlined in Section 5.3 of the Interlocal Contract. The total annual recharge for the Edwards Aquifer reported April 3, 2025 was 154,000 acre-feet, resulting in the 10-year recharge average of 554,340 acre-feet. The ten-day average of aquifer levels measured at the J-17 index well as of April 3, 2025 was 629.1 ft msl.

Leasing: In 2018, EAA staff began marketing long-term (ten-year) forbearance agreements with regional permit holders and in 2020 completed the enrollment goal for years 2021 through 2028. In 2026, the total amount of water available under long-term leases is 11,293.418 acre-feet and 38,513.982 acre-feet in forbearance agreements for a total of 50,000 acre-feet. On December 31, 2026, a total of 4 ASR leases in the amount of 601.400 acre-feet will expire and will be re-enrolled as a forbearance agreements by the end of 2026 and will be applied to the 2027 balance. EAA staff will continue to maintain and manage 50,000 acre-feet of groundwater withdrawal rights under leases and forbearance agreements. This water will remain unused during a repeat of drought of record conditions.

Monitoring:

The EAA will actively manage the Interlocal Contract with SAWS. Status reports and updates will be provided regularly to the Implementing Committee.

ASR Regional Advisory Group: Per Section 5.5.1 of the EAHCP, a 12-person SAWS ASR Regional Advisory Group will meet to advise SAWS as SAWS makes the decisions relating to the operation of the ASR facility relevant to the EAHCP. Membership on the Regional Advisory Group will include: four representatives from the San Antonio Water System, the EAHCP Program Manager; one representative each from the EAA, EAA permit holder for irrigation purposes, small municipal pumpers, the spring cities, environmental interests, industrial pumpers, and downstream interests.

Budget:

Table 7.1:

\$4,759,000 – Lease Options
\$2,194,000 – O&M
\$6,953,000 – Total

Estimated 2026 budget:

\$5,651,894 – Lease & Forbearance Options
\$0 – O&M
\$5,651,894 – Total

5.7.2 Water Quality Monitoring Program Strategy for Comal Springs and San Marcos Springs

This work plan details the sampling strategy and protocols for water quality monitoring in 2026 for the Edwards Aquifer Habitat Conservation Plan (EAHCP) (Section 5.7.2) implemented by the Edwards Aquifer Authority (EAA). Water quality monitoring of the Comal and San Marcos springs complexes and their associated surface waters has occurred since 2013 under implementation of the EAHCP. During this time period, the program has employed a variety of sampling strategies: stormwater, surface water, sediments, fish tissue, and passive samplers aimed at a range of environmental contaminants.

The water quality monitoring program underwent a formal review as part of the *National Academy of Sciences (NAS) Report 1* (2015) containing recommendations for EAHCP's Monitoring, Modeling and Applied Research programs, including the Expanded Water Quality Monitoring Program. Subsequently, a work group was formed in 2016 to assess recommendations presented in the NAS report. The result was a scope of work that was executed from 2017 – 2020.

Beginning in 2021, additional refinements to the program are being implemented. The primary changes from the previous implementation include discontinuing stormwater and passive sampling, adding surface water sampling, and modifying the analyte list. Table 1 presents an overview of the core activities comprising the EAHCP Water Quality monitoring program. Additionally, as needs arise, other water quality sampling activities may occur as developed through the EAHCP committees and included in the Annual Work Plan.

Target for 2026:

Water quality monitoring activities for 2026 include sampling activities for surface water, groundwater, and fish tissue in addition to operation of the real-time network. Specific actions for each sample type are discussed below. Analyte lists and maps follow this discussion. All samples will be collected following the EAA's *Field Sampling Plan* and analyzed by a NELAP accredited contract laboratory.

Groundwater sampling:

Groundwater samples will be collected from Spring 1, Spring 3, Spring 7 (Comal), Deep and Hotel (San Marcos) springs during the Spring and Fall under normal flow conditions (Figures A1 and A2). Groundwater samples will be collected by directly filling a bottle or using a previously decontaminated peristaltic pump with the intake portion of the pump placed in the spring orifice to minimize surface water contamination. Samples will be submitted to a contract laboratory for analysis of cations, anions, nutrients, metals, VOCs, SVOCs, herbicides and pesticides, bacteria, TOC, PCBs, and PPCPs. The analyte list for laboratory analyses along with the methods are shown in Table 4. During the collection event, field parameters will be collected that include dissolved oxygen, pH, conductivity, temperature, and alkalinity.

In addition to the biannual groundwater sampling, sucralose will be measured on a monthly basis at Spring 3 and Hotel, and PPCPs will be measured on an every other month basis at Spring 3

and Hotel. These samples will be collected by directly filling bottles at the source of spring flow. During the collection event, field parameters will be collected that include dissolved oxygen, pH, conductivity, and temperature.

Table 1. EAHCP Water Quality monitoring program core activities.

Sample Type	Activity
Surface water	Twice annual sampling in conjunction with Biological Monitoring activities
	Laboratory analyses are focused on bacteria and nutrients
	Locations include upper and lower stations at each spring system
Groundwater	Twice annual sampling in conjunction with EAA springs sampling activities
	Laboratory analyses are focused on geochemical analytes and industrial, commercial, and emerging contaminants. The analytes include cations, anions, nutrients, metals, VOCs, SVOCs, herbicides, pesticides, bacteria, TOC, PCBs, and PPCPs
	Locations include Spring 1, Spring 3, Spring 7 (Comal), Hotel, and Deep (San Marcos)
Sediment	Every other year sampling in even numbered years
	Laboratory analyses are focused on PAHs
	Locations include 6 San Marcos and 5 Comal stations
Fish Tissue	Every other year sampling in odd numbered years
	Laboratory analyses are focused on metals and PPCPs in two fish species
	Locations include upper and lower stations at each spring system
Real-time network	Continuous, telemetered measurements
	Analytes include temperature, dissolved oxygen, and conductivity
	Locations include 3 San Marcos and 3 Comal stations

Surface water sampling:

Surface water samples will be collected from upper and lower river stations at both systems. For Comal Springs, Landa Lake near Spring Island will serve as the upper location, and the lower station is downstream of the Old and New Channel confluence. In San Marcos, Spring Lake near Hotel spring will serve as the upper location, and the downstream location is located at the most downstream real-time water quality monitoring station. Samples at each location will be collected on a biannual basis during normal flow conditions in conjunction with the Biological Monitoring program (Spring and Fall). Water samples will be taken from flowing parts of the stream on the upstream side of the sample collector. A previously decontaminated Kemmerer or similar device will be used to collect samples at approximately mid-depth in the water column. Samples will be submitted to a contract laboratory for analysis of nutrients (Table 5). During the collection event, field parameters will be collected that include dissolved oxygen, pH, conductivity, and temperature.

Sediment sampling:

Sediment samples will be collected once from four locations within the Comal and six locations in San Marcos (Figures 1 and 2). Three samples will be collected at each sample site and composited into one sample for analysis. Sediment samples will be analyzed for the parameters shown in Table 6.

Real Time Instrument Water Quality Data Logging:

Continuous water quality monitoring stations will continue in 2026 at three locations in the Comal and three locations in San Marcos. The network consists of Insitu AquaTroll sondes measuring dissolved oxygen, conductivity, temperature, and turbidity (Sessom Creek only). Measurements are collected every fifteen minutes and telemetered in real-time.

Quality control procedures:

Field collection methods and quality control procedures for the discrete sampling types are guided by the EAA's Field Sampling Plan. The anticipated number of samples and field quality control samples sent for analyses in 2026 are shown in Table 2. Brief descriptions of the intent of the quality control tests are described below.

Table 2. Sample amounts for 2026 water quality activities.

Sample type	Field Samples	Equipment blank	DI blank	Lab duplicate	Field duplicate	Total samples
Groundwater	18	2	2			22
Sucralose	24		4		2	30
Surface water	10	2			4	16
Sediment	10				2	12

Both equipment blanks and DI blanks use reagent grade ASTM II deionized water to assess external contamination of environmental samples. Equipment blanks examine the contamination introduced through the sampling procedure. These are conducted by transferring the deionized water through equipment that has been decontaminated for field use. DI blanks consist of deionized water sent directly to the laboratory and are designed to examine sample containers and other laboratory contamination.

Lab and field duplicates are intended to assess the precision and repeatability of the analytical procedure and homogeneity of the environmental sample type. Laboratory duplicates consists of a single well-mixed sample split into two samples for analysis. Field duplicates consists of a second sample collected immediately after an initial sample.

Additionally, all laboratory quality control data including matrix spikes and surrogate blanks will be reported.

Monitoring:

A summary report presenting the 2026-year findings will be prepared by EAA staff and included in the EAHCP annual report. The report will include an evaluation of the analytical data and its quality, discussions of results, and a description and rationale for any deviations from the Work Plan described here. The report will be completed by March 2026.

Data collected as part of the 2026 EAHCP Water Quality monitoring program will be kept electronically with the EAA. Data from quality controlled discrete sample types (surface water, groundwater, sediment, and fish tissue) will be housed by EAHCP staff in delimited file types that include all discrete measurements from the program beginning in 2013. Quality controlled time series data associated with the real-time network are housed with existing aquifer time-series data by the EAA.

Cost Estimate:

Costs for laboratory analyses are shown in Table 3 and are based on estimates provided by commercial laboratories in 2023. Field supplies costs in Table 3 cover field collection and analysis equipment including calibration standards and Kemmerer device.

Table 3. Estimated 2026 EAHCP Water Quality monitoring program costs.

Sample type	Total samples	Cost per sample	Total Costs
Groundwater	22	\$1,1174	\$25,828
Sucralose	30	\$232	\$6,960
Surface water	16	\$250	\$4,000
Sediment	12	\$200	\$2,400
Field Supplies			\$5,000
		Total	\$40,188*

*This amount does not include surplus monies made available for additional Water Quality Monitoring needs but will not exceed the \$65,000 listed in the funding table on Page 2.

Sample location maps and analyte lists



Figure 1. Water quality sampling locations for the Comal system.



Figure 2. Water quality sampling locations for the San Marcos system.

Table 4. Analytical parameters for groundwater samples.

Analyses
Volatile Organic Compounds (VOCs)
Semi-volatile Organic Compounds (SVOCs)
Organochlorine Pesticides
Polychlorinated Biphenyls (PCBs)
Organophosphorous Pesticides
Herbicides
Metals (Al, Sb, As, Ba, Be, B, Cd, Cr (total), Cu, Fe, Pb, Mn, Hg, Ni, Se, Ag, Tl, V, and Zn)
General Chemistry (GWQP) Total Alkalinity (as CaCO ₃), Bicarbonate Alkalinity (as CaCO ₃), Carbonate Alkalinity (as CaCO ₃); (Cl, Br, NO ₃ , SO ₄ , F ⁻ , pH, TDS, TSS, Ca, Mg, Na, K, Si, Sr, CO ₃), and Total Suspended Phosphorus (total)
Total Organic Carbon (TOC),
Dissolved Organic Carbon (DOC)
Kjeldahl Nitrogen
Bacteria Testing (<i>E coli</i>)
PPCPs

Method	Method Description	Protocol
8260B	Volatile Organic Compounds	(GC/MS) SW846
8270C	Semivolatile Organic Compounds	(GC/MS) SW846
8081B	Organochlorine Pesticides	(GC) SW846
8082A	Polychlorinated Biphenyls (PCBs)	by Gas Chromatography SW846
8141A	Organophosphorous Pesticides	(GC) SW846
8151A	Herbicides	(GC) SW846
6010B	Metals	(ICP) SW846
6020	Metals	(ICP/MS) SW846
7470A	Mercury	(CVAA) SW846
300.0	Anions,	Ion Chromatography
340.2	Fluoride	MCAWW
365.4	Phosphorus,	Total EPA
9040C	pH	SW846
9060	Organic Carbon,	Total (TOC) SW846
SM 2320B	Alkalinity	SM
SM 2540C	Solids,	Total Dissolved (TDS) SM
SM 2540D	Solids, Total Suspended (TSS)	SM
351.2	Nitrogen, Total Kjeldahl	MCAWW
1694	PPCPs	LC-MS/MS

Protocol References:

EPA = US Environmental Protection Agency

MCAWW = "Methods For Chemical Analysis Of Water And Wastes", EPA-600/4-79-020, March 1983 And Subsequent Revisions.

SM = "Standard Methods For The Examination Of Water And Wastewater",

SW846 = "Test Methods For Evaluating Solid Waste, Physical/Chemical Methods", Third Edition, November 1986 And Its Updates.

Table 5. Analytical parameters for surface water samples

Analyses		
Soluble Reactive Phosphorous		
Phosphorus (total)		
Total Organic Carbon (TOC),		
Dissolved Organic Carbon (DOC)		
Kjeldahl Nitrogen		
Nitrates and Ammonium		
Method	Method Description	Protocol
365.4	Phosphorus,	Total EPA
9060	Organic Carbon,	Total (TOC) SW846
351.2	Nitrogen, Total Kjeldahl	MCAWW
445.0	Chlorophyll a	Fluorescence
8141a	Organophosphates	SW846
353.2	Nitrates	
350.3	Ammonia	

Protocol References:

EPA = US Environmental Protection Agency

MCAWW = "Methods For Chemical Analysis Of Water And Wastes", EPA-600/4-79-020, March 1983 And Subsequent Revisions.

SM = "Standard Methods For The Examination Of Water And Wastewater",

SW846 = "Test Methods For Evaluating Solid Waste, Physical/Chemical Methods", Third Edition, November 1986 And Its Updates.

Table 6. Analytical parameters for sediment samples

Analytes
Benzo[a]anthracene
Chrysene
Benzo[a]pyrene
Benzo[b]fluoranthene
Benzo[k]fluoranthene
Fluoranthene
Dibenz(a,h)anthracene
Indeno[1,2,3-cd]pyrene
Pyrene
Phenanthrene
Fluorene
Benzo[g,h,i]perylene
Anthracene
Acenaphthene
Acenaphthylene
Benzo[g,h,i]perylene

Carbazole
2-Methylnaphthalene
Naphthalene
Total Organic Carbon (TOC)

8270C - SVOCs GC/MS SW8310

9060 Organic Carbon, Total (TOC) SW846

Protocol References:

EPA = US Environmental Protection Agency

MCAWW = "Methods For Chemical Analysis Of Water And Wastes", EPA-600/4-79-020, March 1983 And Subsequent Revisions.

SM = "Standard Methods For The Examination Of Water And Wastewater",

SW846 = "Test Methods For Evaluating Solid Waste, Physical/Chemical Methods", Third Edition, November 1986 And Its Updates.

6.3.1 Biological Monitoring Program for the Comal and San Marcos Aquatic Ecosystem

Long-term Objective:

Since 2000, the Edwards Aquifer Authority (EAA) has undertaken biological monitoring of the Comal and San Marcos spring systems. In 2013, the elements of the program were incorporated into the Biological Monitoring Program (BioMP) for the Edwards Aquifer Habitat Conservation Plan (EAHCP).

The purpose of the BioMP is “to monitor changes to habitat availability and population abundance of the Covered Species that may result from Covered Activities” (EAHCP § 6.3.1). The BioMP includes: (1) Comprehensive Sampling, (2) any triggered Critical Period Monitoring, (3) any high flow triggered monitoring (4) and any EAHCP-specific sampling required by Section 6.4.

Target for 2026:

The 2026 BioMP for the Comal and San Marcos aquatic ecosystems will continue to include Baseline and Critical Period Monitoring along with a Net Disturbance impact assessment and overall Take Determinations. The 2026 BioMP will continue to use the standard operating procedures adopted in 2016 because of the Biological Monitoring Work Group (EAHCP 2016)

in addition to what is noted in this document. These standard operating procedures were instituted for the BioMP beginning in 2017.

Monitoring:

Aquatic Vegetation Mapping: The contractor will conduct aquatic vegetation mapping in the four long-term monitoring reaches in the Comal Springs system and in the three long-term monitoring reaches in the San Marcos Springs system. The comprehensive mapping is conducted using a GPS unit with real-time differential correction with sub-meter accuracy.

Zebra Mussel Monitoring: The contractor will conduct zebra mussel monitoring using passive techniques in both the Comal and San Marcos rivers.

Texas wild-rice Mapping: The contractor will map all Texas wild-rice from Spring Lake downstream to the confluence of the Blanco River on an annual basis. The annual mapping will occur during the summer (July-August). The location of every stand of Texas wild-rice will be recorded using a GPS unit with real-time differential correction with sub-meter accuracy.

Fountain Darter Sampling: The contractor will conduct drop and dip netting and visual aquatic surveys with SCUBA during the Spring and Fall sampling events. Additional dip net sampling will be conducted during the Summer sampling event. Aquatic vegetation will be mapped in the reaches prior to drop and dip net activities.

Drop Net Sampling: Drop netting will be used to sample fountain darters in identified reaches of the rivers among dominant aquatic vegetation species that have been selected through stratified random sampling. Fountain darters will be identified, counted, measured, examined for condition, and returned to the river at the point of collection. Other fish will be identified and released, or preserved, and identified in a laboratory. Live rams-horn snails will be counted, measured, and destroyed. Exotic Asian snails and Asian clam will be identified, general abundance recorded, then destroyed. The number of crayfish and grass shrimp per drop net will be noted. Furthermore, vegetation species, vegetation height, vegetative areal coverage, substrate type, water depth, mean column velocity, velocity at 15 centimeters (cm) above the bottom, water temperature, conductivity, pH, and dissolved oxygen levels will be recorded for each drop net.

Dip Net Sampling: The contractor will conduct dip net timed surveys, as well as presence/absence surveys in specified sections throughout the spatial extent of both systems. Fountain darters collected by dip net monitoring will be examined for gill condition. Additionally, total length of collected individuals will be measured during timed dip net surveys. Timed surveys will be conducted in all habitat types up to a depth of 1.4 m, within each section, moving upstream during the sampling process with prime darter habitat receiving the most effort.

Presence/absence surveys will be conducted by taking 4 dip net sweeps at 50 random sample site locations within the 4 representative reaches at Comal Springs (Upper Spring reach [5 locations], Landa Lake reach [20 locations], Old Channel reach [20 locations], and New Channel reach [5 locations]), and the 50 random sample site locations within the three representative reaches in

San Marcos Springs (Spring Lake Dam reach [15 locations], City Park reach [20 locations], and I-35 reach [15 locations]).

Visual Fountain Darter Survey: Visual aquatic surveys will be conducted using SCUBA in a fixed location in Landa Lake to identify fountain darters at depths deeper than conventional sampling methods allow.

Comal Springs Invertebrate Sampling: The contractor will conduct sampling for Comal Springs invertebrates during the Spring and Fall sampling events.

One drift net each will be placed over the main spring orifice of Spring Run 1, Spring Run 3, and Spring Run 7 at Comal Springs. All endangered invertebrates will be identified and counted in the field and returned to the orifice they were collected upon completion of the 24-hour sample period. All other invertebrates will be preserved and transported to an off-site laboratory for taxonomic classification. Coordination with the USFWS San Marcos Aquatic Resources Center (SMARC) will take place each time to assist with refugia collections when needed.

The Comal Springs riffle beetle (CSRB) cotton lure standard operating procedure, or a suggested (and EAHCP staff approved) alternate method, and quantitative survey methods will be utilized to conduct Comal Springs riffle beetle sampling in three locations (i.e., Spring Run 3, western shoreline of Landa Lake, and Spring Island area). Ten springs within each of the three locations will be identified for sampling by the contractor. If possible, the same ten springs from the previous year will be sampled.

The CSRB cotton lure standard operating procedure, cotton lure quantitative survey method, and recommendations generated during the CSRB workgroup describe the appropriate protocols for CSRB to be identified, counted, and returned to their spring of origin. Other spring invertebrates collected on the lures will also be noted including the Comal Springs dryopid beetle (*Stygoparnus comalensis*) and Peck's cave amphipod (*Stygobromus pecki*).

Salamander Visual Observations: The contractor will conduct salamander sampling during each Spring and Fall sampling event. Comal Salamander surveys will be timed and conducted by observation from the surface or dive mask and snorkel at Spring Run 1, Spring Run 3, Spring Island spring runs, and at the eastern outfall at Spring Island.

San Marcos salamander surveys follow the quantitative sampling method described in Nelson, J. (M.S. Thesis, Texas State University, 1993). Observations for the San Marcos salamander will be done by dive mask and snorkel or SCUBA for three, 5-minute timed surveys per area. San Marcos salamanders will be counted, measured and the overall substrate where they were found documented.

In both systems, sampling will require turning over rocks in the sample site for set periods of time in order to expose the salamanders and obtain a visual count. Whenever possible, all rocks will be returned to their original location. For this monitoring, salamanders will only be observed, and no collections will occur.

Comal Springs Discharge Measurements: The contractor will conduct discharge measurements on Comal Springs during the Spring and Fall sampling events. Discharge measurements will be conducted at Spring Runs 1, 2, and 3, Upper Spring Run Reach, and the Old Channel below Elizabeth Street and will be used to establish the contributions of each major spring run to total discharge in the river and to establish the relative proportion of water flowing in the Old and New Channels.

Water Quality Sampling: The contractor will maintain and download existing thermistors located throughout each system. Standard water quality parameters (water temperature, conductivity compensated to 25°C, pH, dissolved oxygen [mg/l], water depth at sampling point, and observations of local conditions) will be sampled during drop net sampling and fish community sampling activities.

Fixed Station Photography: The contractor will photo document each established, fixed station photograph site. Photographs involve an upstream, across, and downstream picture of the reach and capture key changes in the habitat in the reach.

Macroinvertebrate Community Assessment: The macroinvertebrate community assessment will be conducted using rapid bioassessment (RBA) protocol as described in “Surface Water Quality Monitoring Procedures, Volume 2: Methods for Collecting and Analyzing Biological Assemblage and Habitat Data.” TCEQ RG-416. 2014. The RBAs will be conducted in 5 reaches in the Comal and 4 reaches in the San Marcos at the drop-net fountain darter sites. One composite sample will be collected from each reach (i.e. 9 samples total across both systems). Macroinvertebrate community assessments will be conducted during Comprehensive Sampling and Critical Period Monitoring events.

Fish Community Sampling:

SAN MARCOS SYSTEM—Fish will be sampled at two locations within Spring Lake associated with San Marcos salamander surveys (Big Riverbed and Hotel Area) and one location just upstream of the eastern spillway. Two different SCUBA techniques will be used to document the fish within the three locations, mesohabitat and microhabitat surveys. Three additional SCUBA survey locations will occur in the San Marcos River (Upper, Mid, and Lower), located in representative deep areas where seining has proven to be inefficient. The exact location of the SCUBA sampling within each section may change slightly based on conditions at the time of the sampling event.

In addition to SCUBA, fish in the San Marcos River will be sampled among five sites within three reaches (Upper: Sewell, Veteran’s Park, Middle: Crook’s Park, and Lower: San Marcos Wastewater Treatment plant and Smith property) via seines within wadeable habitats. Multiple seine hauls will occur along a river transect perpendicular to the flow. Within each seine haul, fish will be identified, measured, examined for disease, and native fish returned to the river. Exotics will be removed from the system as per scientific permit. In addition to fish data, habitat data will be collected for each seine haul including current velocity, water depth, substrate composition, in-stream coverage, climatic conditions, and mesohabitat type.

COMAL SYSTEM—Fish will be sampled at three locations within Lake via SCUBA surveys. In particular, one of the SCUBA survey locations in Landa Lake will be in the same as the ongoing fountain darter belt transect survey. In addition, SCUBA surveys will be conducted within the Upper Spring Run, Old Channel, and New Channel sections of the Comal River. Two different SCUBA techniques will be used to document the fish within the three locations, mesohabitat and microhabitat surveys..

In addition to SCUBA surveys, three locations (Upper Spring Run, New Channel, and Old Channel) will be sampled via seines among wadeable habitats to evaluate and track fish populations in the Comal River. Multiple seine hauls will occur along a river transect perpendicular to the flow. Within each seine haul, fish will be identified, measured, examined for disease, and native fish returned to the river. Exotics will be removed from the system per scientific permit requirements. In addition to fish data, each seine haul will include habitat measurements (i.e. current velocity, water depth, substrate composition, in-stream coverage, climatic conditions, and mesohabitat type).

EAHCP Habitat Baseline and Disturbance Determination: This determination is intended to fulfill Section M 1a and 2a of the Incidental Take Permit (ITP).

DOCUMENT BASELINE HABITAT CONDITIONS—The contractor will use January 1 of the contract year GIS mapping, biomonitoring data and other existing sources to establish occupied habitat for the EAHCP Covered Species. Specific to Item M (1a and 2a) of the ITP, only occupied habitat within the Comal and San Marcos springs/river ecosystems will be included.

DOCUMENT EAHCP MITIGATION AREAL EXTENT PER PROJECT—The contractor will work with staff and contractors from the City of New Braunfels, City of San Marcos and Texas State University, coordinating through EAA staff, to describe in GIS map form, representing a snapshot in time on December 31 of the contract year, the areal extent of all direct EAHCP mitigation and restoration activities in the Comal and San Marcos springs systems.

If GIS files of the project/affected areas are unavailable, the contractor will either: 1) map those areas directly with high grade GPS in real-time, or 2) use existing areal imagery to pinpoint and outline locations with subsequent, supplemental GPS ground truth mapping. The contractor will ensure that areas represented on all maps are representative of actual mitigation, not concept areas.

Assessment of Net Disturbance: The contractor will evaluate the baseline maps versus the EAHCP project maps and quantify the area of direct disturbance that may have potential effects from mitigation and restoration activities as described in Item M (1a and 2a) of the ITP. The focus will be on quantifying the direct impacts (removal of non-native vegetation, etc.) via areal coverage of habitat, but will also describe potential indirect impacts (turbidity, etc.) qualitatively. This analysis will not extend beyond comparisons of areal coverage of occupied habitat.

Annual "Take" Estimate: The contractor shall estimate Take for each of the Covered Species utilizing the information generated by the BioMP, the information and guidance in Chapters 4 and 6 of the EAHCP, the Biological and Conference Opinion issued by USFWS, and any other

relevant information. The purpose of this Take estimation is to ensure compliance with Section H of the ITP.

Critical Period Monitoring: The Critical Period Monitoring component will be performed on both systems and be based upon established flow trigger levels for each system. The type and extent of sampling conducted is dependent on the respective trigger level and is designed to be duplicative of full biomonitoring sampling and will include species-specific sampling based on the flow triggers.

HIGH/LOW FLOW MONITORING—The contractor will conduct high flow Critical Period Monitoring only after the following triggering criteria are met:

- a) The daily average flow exceeds 385 cubic feet per second (cfs) in the San Marcos aquatic ecosystem or 500 cfs in the Comal aquatic ecosystem (total flow through the ecosystem as measured at the USGS gauging station located immediately downstream of the ecosystem); and
- b) After conducting a joint visual inspection of the aquatic ecosystem with the contractor, EAA staff determines that high flow Critical Period Monitoring is warranted and approved.

Before high flow Critical Period Monitoring is conducted, the sampling parameters must be recommended by the contractor and pre-approved by EAA staff, based on professional judgment, and may include any parameter from the full biomonitoring sampling, with the exception of gill net sampling.

The Comal and San Marcos springs systems flow-based triggers are associated with specific sampling parameters.

SAN MARCOS SYSTEM SAMPLING—Low flow Critical Period Monitoring for the San Marcos River triggers at 120 cfs, with Texas wild-rice vulnerable stand monitoring as described in Task 3 of the Comprehensive Sampling Program. Monitoring will occur at 5 cfs declines or a maximum of once per week. The first Full Sampling Event is triggered at 100 cfs, with subsequent declining Full Sampling Events triggering at 85, 60, 25, and 10-0 cfs for a total of five declining Full Sampling Events. In addition, two recovery Full Sampling Events would be conducted as the system rebounds from the low flow period. Between Full Sampling Events, habitat evaluations, per every 5 cfs decline, would be conducted again not to exceed weekly monitoring.

COMAL SYSTEM SAMPLING— Low flow Critical Period Monitoring for the Comal River triggers at 200 cfs. This triggers the first Full Sampling Event with 4 subsequent Full Sampling Events being triggered at 150, 100, 50, and 10-0 cfs, respectively. Two recovery Full Sampling Events are scheduled as the flows rebound and stabilize from drought conditions. The Comal system also has habitat evaluations scheduled between Full Sampling Events; however, at 10 cfs increments again not to exceed weekly observation. An additional component for the Comal system is the detailed riffle beetle habitat evaluation and spring orifice condition documentation that is triggered at 120 cfs and continued at 10 cfs increments during decline. Flow split

monitoring between the Old and New Channel will also occur during the riffle beetle evaluation and spring orifice condition documentation.

A review of historic flow records indicates that the lower the flow, the lower the chance an even lower flow event will occur, thus reducing the chances of a complete decline and recovery as outlined above. Typically, both systems rebound from drought conditions due to a tropical depression rainfall event or some other weather pattern that produces a large amount of rainfall over the watershed. Flows typically come up rapidly and require a period of stabilization before the collection of biological data is meaningful.

Gill Net Evaluation: In addition to the full sampling activities, the contractor will conduct gill net evaluations in the immediate vicinity of the fountain darter SCUBA surveys in Spring Lake and Landa Lake. The Spring Lake evaluation will be triggered at 85 cfs and lower triggers. The Landa Lake assessment will be triggered at 100 cfs and lower triggers. The survey is designed to examine exotic fish concentrations and stomach content analyses with respect to predation of listed species. The number of each species (native and non-native) collected in the gill net and the data will be recorded and converted to catch per unit effort.

Water Quality Grab Sampling: The contractor will collect water quality grab samples at the established triggers at 18 stations longitudinally distributed in the San Marcos system and 12 stations longitudinally distributed in the Comal system. The samples will be from the surface, mid-depth and near bottom.

EAHCP Low Flow Sampling: To protect the Covered Species, Chapter 6 of the EAHCP contains specific flow requirements for both systems that trigger sampling events. This sampling is in addition to the Comprehensive Sampling and Critical Period Monitoring components and consists of an increased frequency of sampling for aquatic vegetation, Texas wild-rice mapping, as well as additional sampling of fountain darters, Comal Springs riffle beetles, and salamanders.

Cost estimate:

Table 7.1:

\$400,000

Estimated 2026 cost:

\$755,774*

*Includes Critical Period Monitoring if required

6.3.3 Ecological Modeling

Long-term Objective:

The development of a mechanistic ecological model (Ecomodel) is assigned to the Edwards Aquifer Authority per section 6.3.3 of the EAHCP. The purpose of the Ecomodel is to evaluate potential adverse effects to Covered Species and their critical habitat, and to the extent such effects are determined to occur, quantify their magnitude, and develop alternate strategies.

Target for 2026:

No Ecological Modeling work is anticipated in 2026.

Budget:

Table 7.1:

\$25,000

Estimated 2026 budget: *

\$0

*There is no proposed budget for 2026.

6.3.4 Applied Research

Long-term Objective:

Applied research adds a valuable component to the EAHCP to better understand the ecological dynamics for all Covered Species.

Target for 2026:

Savings from past years will be applied to perform research to support a better understanding of existing Conservation Measures, EAHCP Covered Species, and other aspects of the EAHCP program. The San Marcos salamander study started in 2025 will continue into 2026 that is testing a new sampling methodology to assess population trends in the species. The study is being conducted at the recommendation of the EAHCP Biological Objective Subcommittee and should aid in the development of new Biological Objectives for the new Incidental Take Permit starting in 2028. The aquatic vegetation maintenance study will continue to occur concurrently with the San Marcos salamander study to aid in assessing the effects of Spring Lake aquatic vegetation maintenance efforts on the salamander and evaluating the habitat based EAHCP Biological Objective for the salamander.

The EAA will continue a study from 2025 that is using genetic information on the Comal Springs Riffle Beetle collected prior to the EA Refugia study (2024) to further evaluate the genetic history of the species.

A study on the Comal Springs Dryopid Beetle started in 2025 will continue and be completed by the end of 2026. The objectives of the study are to develop field sampling protocols that can reliably detect the beetle in Landa Lake and spring runs of the Comal system and evaluate analytical protocols that can effectively monitor changes in the beetle. The goal is to use the sampling and analytical protocols from this study to add a monitoring plan for the species into the EAHCP biomonitoring program.

The EAA will continue a contract from 2025 that is focused on environmental data management, specifically aimed to improve the organization and synthesization of the EAHCP biomonitoring data, making it easier to analyze and data share.

Budget:

Table 7.1:

\$0

Estimated 2026 budget:

\$250,000

FMA § 2.2 EAHCP Program Management

Section 2.2 of the Funding and Management Agreement (FMA) assigns “general management and oversight” of the EAHCP to the Edwards Aquifer Authority (EAA). Section 5.6.5 of the FMA allows the EAA to use EAHCP funds for administrative costs and employee salaries, so long as all incurred costs and salaries are 100% related to “general management and oversight” of the EAHCP.

Long-term Objectives:

To manage and oversee day-to-day operations and administration, in coordination with the Applicants, of the EAHCP; resulting in a valid and continued Incidental Take Permit (ITP) from the USFWS for designated Covered Activities.

Program Activities in 2026:

EAHCP staff will continue to coordinate and monitor habitat protection measures completed by the City of New Braunfels and City of San Marcos/Texas State University in their respective 2026 Work Plans. The springflow and supporting measures are described in this 2026 EAA Work Plan.

The EAHCP Program Manager will execute duties as assigned in the FMA and:

- Manage EAHCP day-to-day activities;
- Facilitate program correspondence with the USFWS;
- Manage program activities in support of a 2028 ITP renewal;
- Serve on the ASR Advisory Committee;
- Facilitate the Adaptive Management Process (AMP) for all Routine and Nonroutine decisions; and
- Facilitate and coordinate all meetings of the EAHCP Implementing and Stakeholder committees and possible Subcommittees and Work Groups as created by the Implementing, Science and Stakeholder committees.

EAHCP Chief Science Officer and support staff will continue the following activities:

- Manage Refugia Work Plan activities including operations and research;
- Manage applied research;
- Manage biological monitoring;
- Manage and perform water quality monitoring;
- Update and maintain biological and water quality monitoring databases;
- Prepare for all meetings of the EAHCP Science Committee and EAHCP Implementing, and Stakeholder committees at the request of the Program Manager; and
- Prepare for all meetings of the Comal Springs Riffle Beetle Work Group, Research Work Group, and other possible Subcommittees and Work Groups as created by the Implementing, Science and Stakeholder committees at the request of the Program Manager.

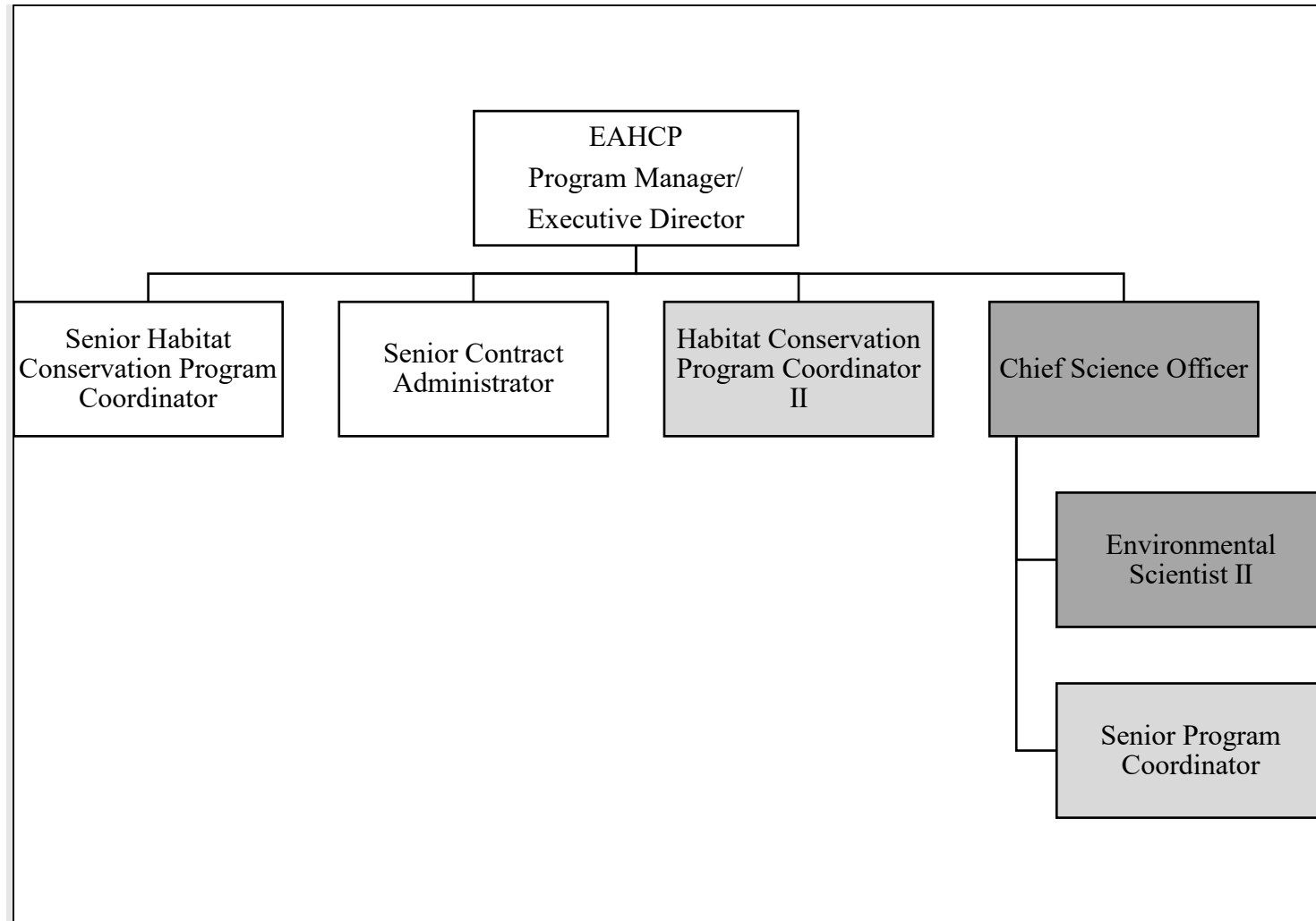
EAHCP Administrative staff will continue the following activities:

- Oversee the City of New Braunfels and San Marcos/Texas State University Work Plan activities;
- Coordinate 2026 Work Plan and funding application amendments for the EAA, City of New Braunfels, and San Marcos/Texas State University;
- Coordinate the development of 2026 Work Plans and funding applications for EAA, City of New Braunfels, and San Marcos/Texas State University;
- Process City of New Braunfels and San Marcos/Texas State University reimbursement's from EAA for habitat protection measures;
- Procure and execute contracts for support measures and program administration;
- Oversee EAA contract tracking and compliance;
- Process EAA contractor's invoices for support measures and program administration;
- Coordinate and prepare for all meetings of the EAHCP Implementing, Science, and Stakeholder committees, (and possible Subcommittees and Work Groups as created by the Implementing, Science and Stakeholder committees);
- Coordinate and prepare correspondence with all EAHCP Implementing, Science, and Stakeholder committee members and Work Groups members under the direction of the EAHCP Program Manager;
- Prepare materials for all AMP activities consistent with Article 7 of the FMA and under the direction of the EAHCP Program Manager;
- Support the EAHCP Program Manager in correspondence to the USFWS including informational memorandums, clarifications, and amendments to the ITP and EAHCP;
- Participate in public outreach initiatives;
- Coordinate and publish the monthly EAHCP Steward newsletter and podcast;
- Maintain the content of the EAHCP website;
- Prepare and compile all Permittees' information for the annual report to USFWS; and
- Track and assist EAHCP Permittees with maintaining compliance with secondary implementation permits, such as: U.S. Army Corps of Engineers, Texas Parks and Wildlife Department, Texas Commission on Environmental Quality, General Land Office, and Texas Historical Commission permits.

Staffing in 2026:

The EAHCP staff consists of the Program Manager, EAHCP Director, Senior Contract Administrator, Senior Habitat Conservation Coordinator, and Habitat Conservation Coordinator II. EAA funds the Chief Science Officer and the Environmental Scientist II positions. Two positions remain vacant but could be filled in 2026. The structure of the existing EAHCP staff positions and EAA-funded positions – **the Threatened and Endangered Species Team** - are illustrated in the chart on the next page.

Threatened and Endangered Species Team



-  Positions Paid from EAA General Budget
-  Vacant Position

Budget:**EAHCP Program Management Budget for 2026**

Description of Expense	Estimated 2026 Costs
Salaries and Fringe Benefits	\$ 710,653
Office Supplies	\$ 1,500
Non-Capital Assets	\$ 6,000
Meeting Expenses	\$ 30,000
Conferences, Seminars, and Training	\$ 22,000
Memberships	\$ 2,000
Printing	\$ 8,000
Hosting, SAAS and Support Agreements	\$ 2,000
Professional Contracted Services	
Annual Report	\$ 50,000
Historical/Archeological Consultation	\$ 50,000
Permit Oversight	\$ 50,000
Outreach/Newsletter	\$ 45,000
Science Committee Compensation	\$ 10,000
ITP Renewal	\$ 398,479
Other	\$ 55,000
Estimated 2026 Total	\$1,440,632

Table 7.1:
\$750,000

Estimated 2026 budget:
\$1,440,632