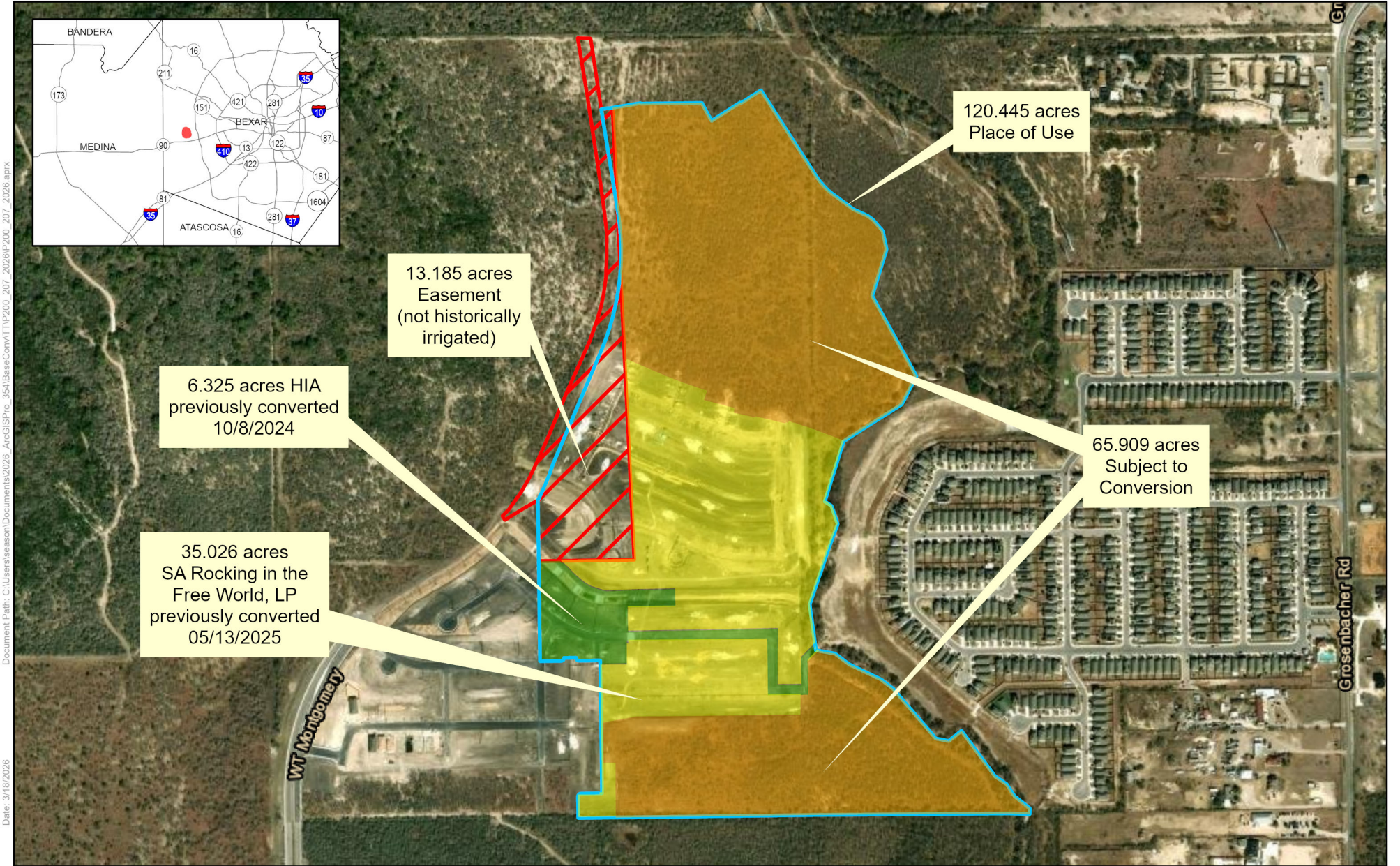


# Exhibit A: P200-207 (BE00317) SA Rocking in the Free World, LP



Date: 3/18/2026

Document Path: C:\Users\season\Documents\2026\_ArcGISPro\_35A\BaseConv\TT\P200\_207\_2026\P200\_207\_2026.aprx



Spatial Reference  
 PCS: NAD 1983 NSRS2007 Texas Centric Mapping System Albers  
 GCS: GCS NAD 1983 NSRS2007  
 Datum: NAD 1983 NSRS2007  
 Projection: Albers

Service Layer Credits: World Imagery: Vantor  
 World Transportation: Esri, HERE, iPC

- 13.185 acres Easement (not historically irrigated)**
  - 35.026 acres SA Rocking in the Free World, LP previously converted 05/13/2025**
  - 6.325 acres HIA previously converted 10/8/2024**
  - 65.909 acres Subject to Conversion**
- 120.445 acres Place of Use**

Reference Scale: 1:8,000



Disclaimer: This map was created for demonstrative use by the Edwards Aquifer Authority (EAA) and not intended for other purposes. This map is to be used as an informational tool only; it is not suitable for projects requiring survey accuracy; data accuracy is not guaranteed.