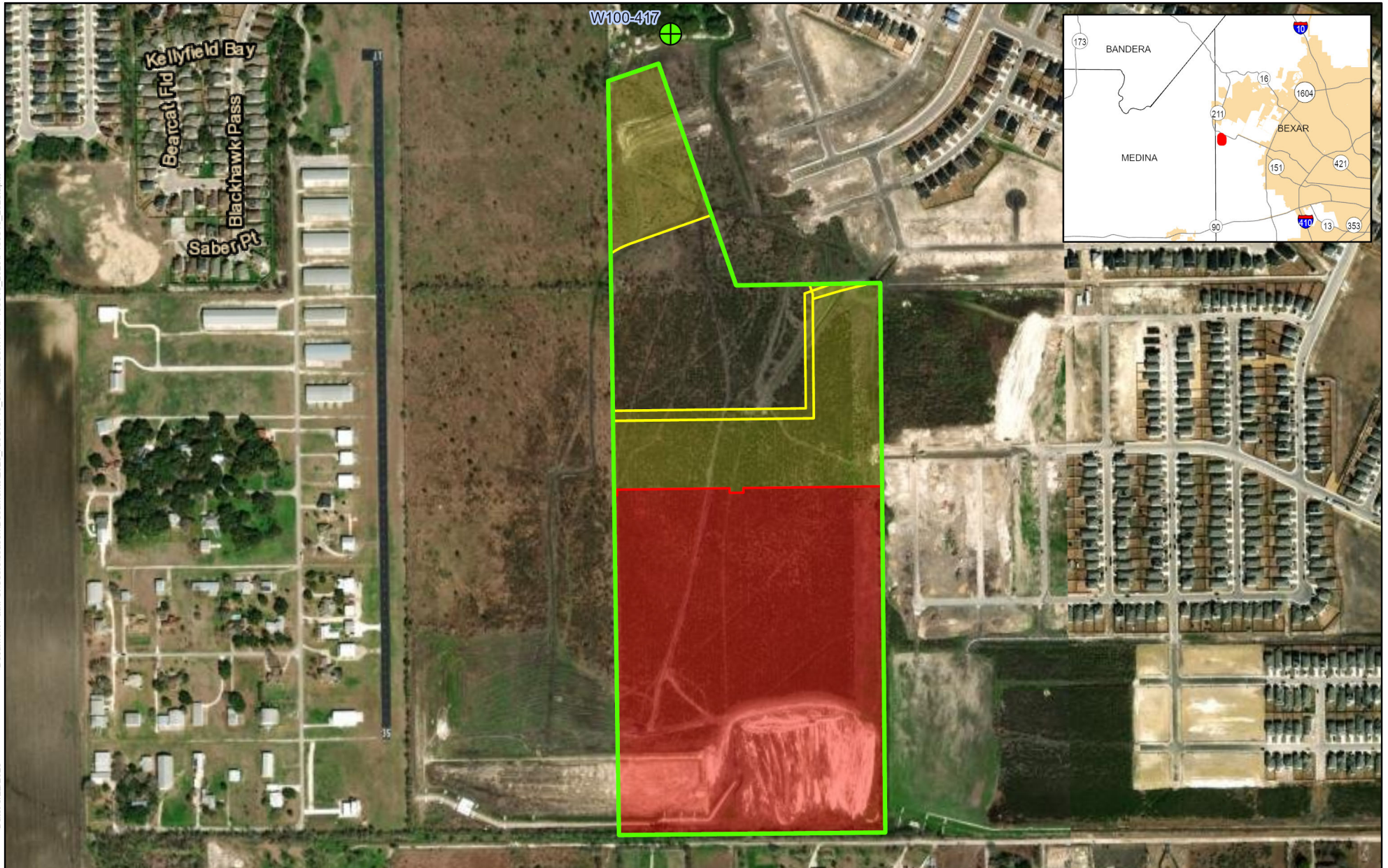


# Exhibit A: P200-533 (BE00222) KB Home Lone Star Inc.

Document Path: C:\Users\season\Documents\2025\_ArcGISPro\_331\BasesConv\TTP108318\_2025.aprx

Date: 8/22/2025



Spatial Reference  
 PCS: NAD 1983 NSRS2007 Texas Centric Mapping System Albers  
 GCS: GCS NAD 1983 NSRS2007  
 Datum: NAD 1983 NSRS2007  
 Projection: Albers



Reference Scale: 1:7,000

- **Area Subject to Conversion (39.926 acres +/-)**
- **Historically Irrigated Land (100.903 acres +/-)**
- **Previously Converted EAA Board Approval (02/11/2025) (17.400 acres +/-)**

Service Layer Credits: World Transportation: Esri, HERE, iPC  
 World Imagery: Maxar



Disclaimer: This map was created for demonstrative use by the Edwards Aquifer Authority (EAA) and not intended for other purposes. This map is to be used as an informational tool only; it is not suitable for projects requiring survey accuracy; data accuracy is not guaranteed.