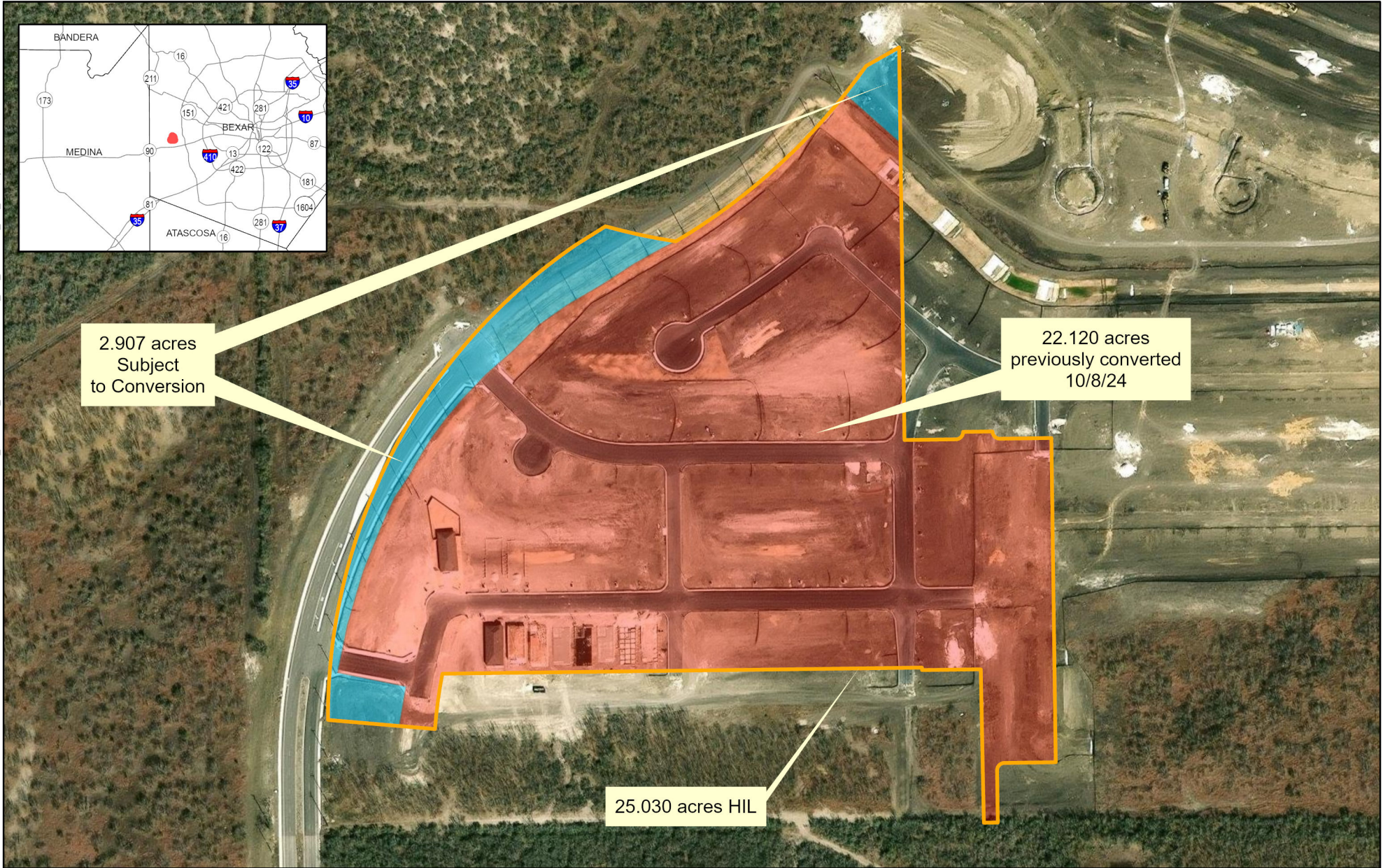
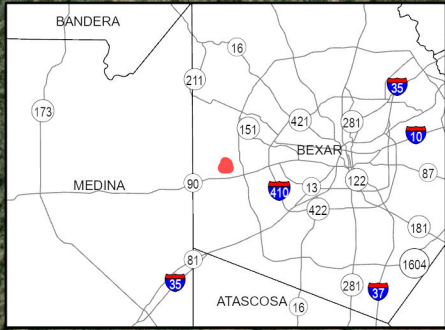


Exhibit A: P200-205 (BE00317) SA Rocking in the Free World, LP



2.907 acres
Subject
to Conversion

22.120 acres
previously converted
10/8/24

25.030 acres HIL



Spatial Reference
PCS: NAD 1983 NSRS2007 Texas Centric Mapping System Albers
GCS: GCS NAD 1983 NSRS2007
Datum: NAD 1983 NSRS2007
Projection: Albers

Service Layer Credits: World Transportation: Esri, HERE, iPC
World Imagery: Microsoft, Vantor

- 2.907 acres Subject to Conversion
- 25.030 acres HIL
- 22.120 acres previously converted 10/8/24

N
Reference Scale: 1:3,286



Disclaimer: This map was created for demonstrative use by the Edwards Aquifer Authority (EAA) and not intended for other purposes. This map is to be used as an informational tool only; it is not suitable for projects requiring survey accuracy; data accuracy is not guaranteed.

Date: 3/18/2026 Document Path: C:\Users\season\Documents\2026_ArcGISPro_354\BasesConv\TP200_205_2026\TP200_205_2026.aprx