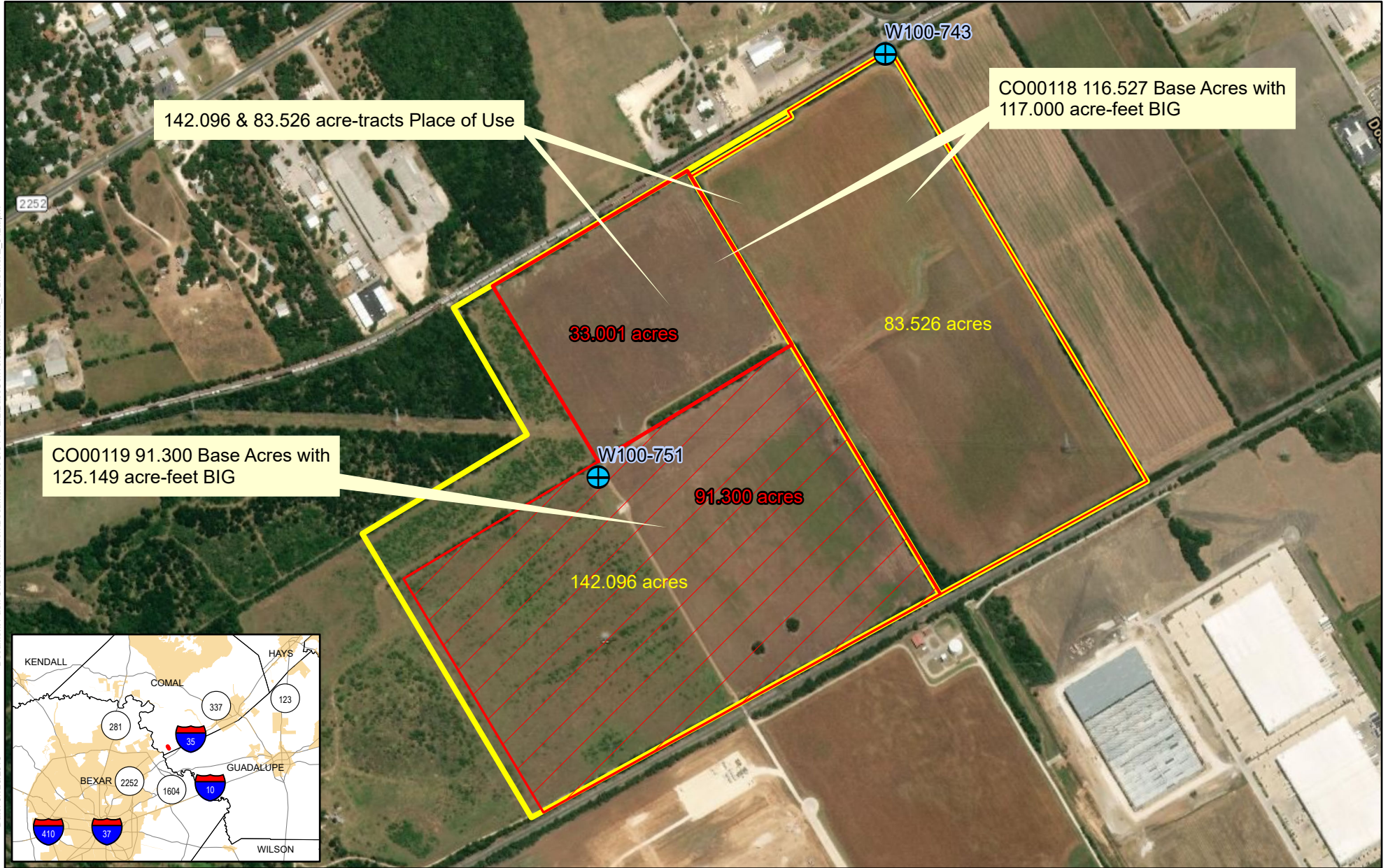
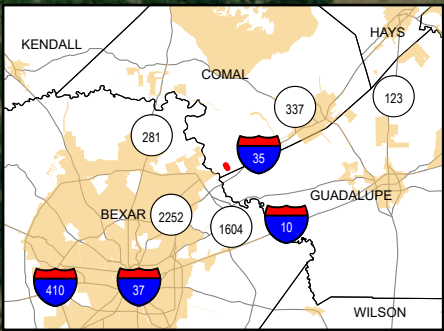


Exhibit A: P100-705 (CO00118) & P108-788 (CO00119) Schertz 312, LLC



Document Path: C:\Users\season\Documents\ArcGIS Pro 2.2\BasesConversions\Schertz_312\Schertz_312.aprx
Date: 07/23/2018



Spatial Reference
 PCS: NAD 1983 NSRS2007 Texas Centric Mapping System Albers
 GCS: GCS NAD 1983 NSRS2007
 Datum: NAD 1983 NSRS2007
 Projection: Albers

- 116.527 Base Acres with 117.000 acre-feet BIG
- 91.3 Base Acres with 125.149 acre-feet BIG
- 142.096 & 83.526 acre-tracts Place of Use

Service Layer Credits: World Imagery: Source: Esri, DigitalGlobe, GeoEye, Earthstar Geographics, CNES/Airbus DS, USDA, USGS, AeroGRID, IGN, and the GIS User Community
 World Transportation: Esri, HERE, Garmin, © OpenStreetMap contributors



Disclaimer: This map was created for demonstrative use by the Edwards Aquifer Authority (EAA) and not intended for other purposes. This map is to be used as an informational tool only; it is not suitable for projects requiring survey accuracy; data accuracy is not guaranteed.