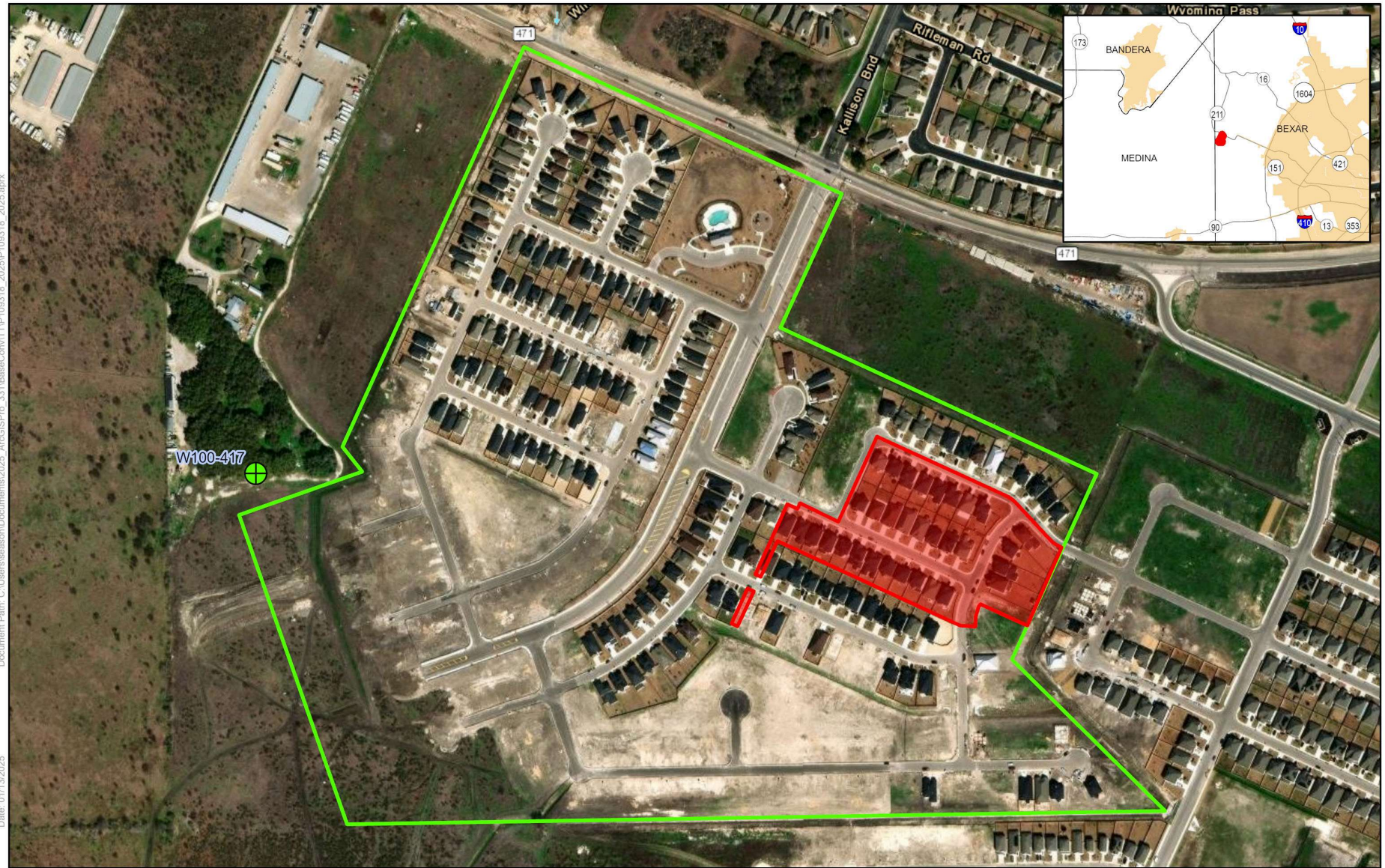


Exhibit A P201-608 (BE00222) KB Home Lone Star, LP et al



Spatial Reference
 PCS: NAD 1983 NSRS2007 Texas Centric Mapping System Albers
 GCS: GCS NAD 1983 NSRS2007
 Datum: NAD 1983 NSRS2007
 Projection: Albers

Service Layer Credits: World Transportation: Esri, HERE, iPC
 World Imagery: Maxar

11.517 acres
Historically Irrigated Acres (96.061 acres +/-)



Disclaimer: This map was created for demonstrative use by the Edwards Aquifer Authority (EAA) and not intended for other purposes. This map is to be used as an informational tool only; it is not suitable for projects requiring survey accuracy; data accuracy is not guaranteed.

